

V9322

EASY/FACILE

MISSES' VESTS: Vests have pockets and shaped hemline. **A:** Reverse side of fabric will show as contrast.

Combinations: **Y**(XS-S-M), **ZZ**(L-XL-XXL)

FABRICS: Ponte Knit, Twill, Crepe Back Satin, Lightweight Denim.

Unsuitable for obvious diagonals.

*With Nap. **Without Nap.

SIZES	XS	S	M	L	XL	XXL
	4-6	8-10	12-14	16-18	20-22	24-26
A 45"/**	2¾	2⅞	2⅞	3¼	3⅜	3⅜
60"/**	2⅞	2¼	2¼	2⅜	2⅜	2½
B 45"/**	2¾	2⅞	2⅞	3¼	3⅜	3⅜
60"/**	2⅞	2¼	2¼	2⅜	2⅜	2½

NOTIONS: Fusible Interfacing Remnant: 2" x 10" (Approximate).

FINISHED GARMENT MEASUREMENTS

Back length from base of neck

A, B	27	27½	28	28½	29	29½
------	----	-----	----	-----	----	-----

GILETS (J. femme): Gilets à poches et ligne d'ourlet en forme. **A:** Le côté réversible du tissu apparaîtra comme le contraste.

Séries: **Y**(TP-P-M), **ZZ**(G-TG-TTG)

TISSUS: Maille de pontée, Twill, Crêpe satin, Denim léger. Grandes diagonales ne conviennent pas.

*Avec Sens. **Sans Sens.

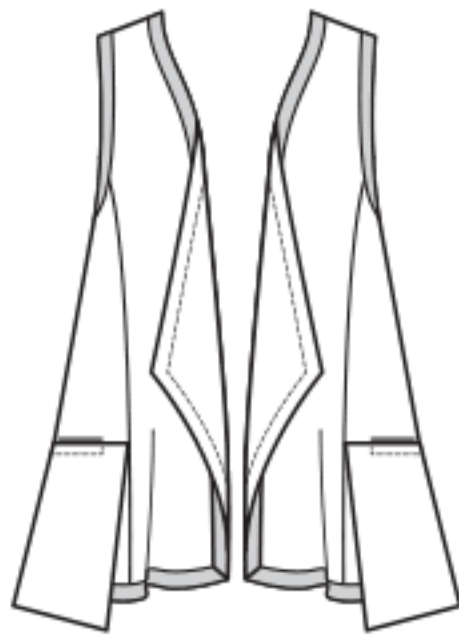
TAILLES	TP	P	M	G	TG	TTG
	4-6	8-10	12-14	16-18	20-22	24-26
A 115cm*/**	2.6	2.7	2.7	3.0	3.1	3.1
150cm*/**	2.0	2.1	2.1	2.2	2.2	2.3
B 115cm*/**	2.6	2.7	2.7	3.0	3.1	3.1
150cm*/**	2.0	2.1	2.1	2.2	2.2	2.3

MERCERIE: Coupon d'entoilage thermocollant d'environ 5cm x 25.5cm.

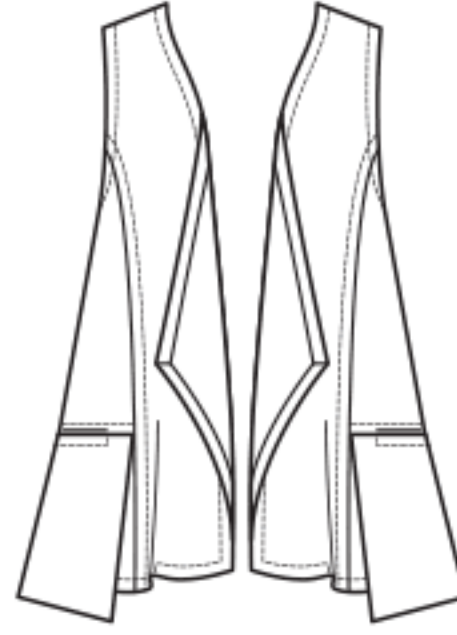
MESURES DU VÊTEMENT FINI

Longueur - dos, votre nuque à l'ourlet

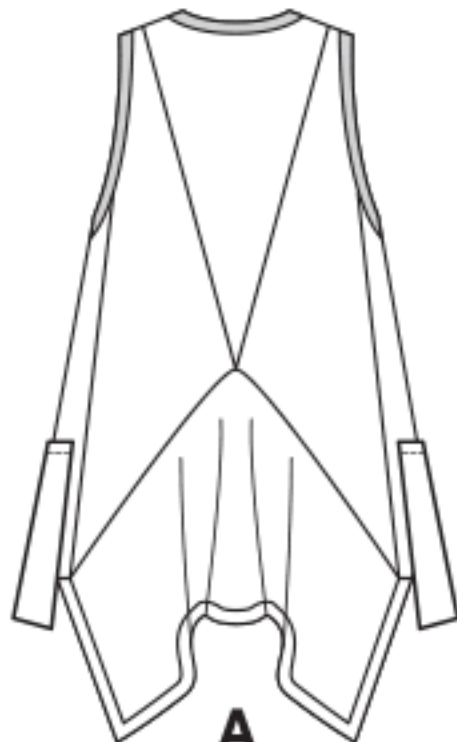
A, B	68	70	71	72	74	75
------	----	----	----	----	----	----



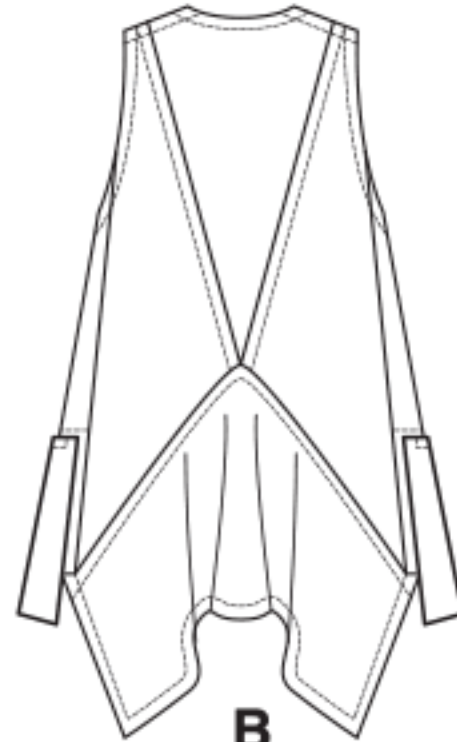
A



B



A



B

