

SUPPLIES

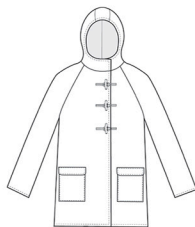
- Fabric – Jacket vn: Sizes 1-3: 3m (3 $\frac{3}{8}$ yd) x 150cm (60in) wide OR 3.3m (3 $\frac{5}{8}$ yd) x 115cm (45in) wide; Sizes 4-8: 3.3m (3 $\frac{5}{8}$ yd) x 150cm (60in) wide OR 4.3m (4 $\frac{3}{4}$ yd) x 115cm (45in) wide Coat vn: Sizes 1-3: 3.2m (3 $\frac{1}{2}$ yd) x 150cm (60in) OR 3.6m (4yd) x 115cm (45in); Sizes 4-8: 3.4m (3 $\frac{3}{4}$ yd) x 150cm (60in) OR 4.6m (5 $\frac{1}{4}$ yd) x 115cm (45in)
- Lining – Jacket vn: Sizes 1-3: 1.5m (1 $\frac{3}{8}$ yd) x 150cm (60in) OR 2.1m (2 $\frac{3}{8}$ yd) x 115cm (45in) wide; Sizes 4-8: 2m (2 $\frac{1}{4}$ yd) x 150cm (60in) OR 2.7m (3yd) x 115cm (45in) wide Coat vn: Sizes 1-3: 1.7m (1 $\frac{7}{8}$ yd) x 150cm (60in) wide OR 2.3m (2 $\frac{1}{2}$ yd) x 115cm (45in) Sizes 4-8: 2.2m (2 $\frac{1}{2}$ yd) x 150cm (60in) OR 3m (3 $\frac{3}{8}$ yd) x 115cm (45in) wide
- Matching thread
- 1.4m (1 $\frac{1}{8}$ yd) interfacing (similar weight to your fabric)
- 6-8 x 15mm ($\frac{5}{8}$ in) visible or hidden press-on or sew-on snaps.
Optional: 2 extra snaps for pockets
- Optional: 3 x ready-made toggle fastenings or toggle buttons and cord
- Optional: Open-end zip 50-53cm (20-21in) for jacket version, 58-72cm (23-28in) for coat version
- Sewing machine, basic tools, incl zip foot

FABRIC SUGGESTION

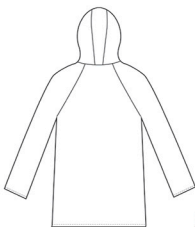
Medium- to heavy-weight woven fabrics such as wool coating, cotton drill, waxed canvas, Gore-Tex, ripstop, PUL and cotton laminate. For the lining, try viscose, acetate, polyester or cotton lawn, or even low stretch jersey for a casual anorak lining.

BODY MEASUREMENTS

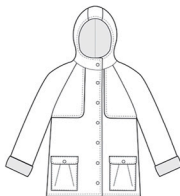
SIZE	BUST	WAIST	HIPS
1 (UK6/US2/EUR34)	76cm (30in)	61cm (24in)	84cm (33in)
2 (UK8/US4/EUR36)	81cm (32in)	66cm (26in)	89cm (35in)
3 (UK10/US6/EUR38)	86.5cm (34in)	71cm (28in)	94cm (37in)
4 (UK12/US8/EUR40)	91.5cm (36in)	76cm (30in)	99cm (39in)
5 (UK14/US10/EUR42)	96.5cm (38in)	81cm (32in)	104cm (41in)
6 (UK16/US12/EUR44)	101.5cm (40in)	86.5cm (34in)	109cm (43in)
7 (UK18/US14/EUR46)	106.5cm (42in)	91.5cm (36in)	114cm (45in)
8 (UK20/US16/EUR48)	112cm (44in)	96.5cm (38in)	119.5cm (47in)



COAT FRONT



COAT BACK



JACKET FRONT



JACKET BACK

