

S9576

Average

MISSES' CORSET, SLEEVES, COLLAR, SHORTS, DECORATIONS AND SKIRTS

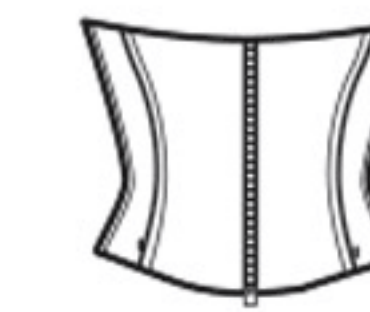
Suggested Fabrics: A,B,C,D,F,G,H,I, **Contrasts H,I:** Cotton/Cotton Blends, Satin, Silk, Lightweight Synthetic Leather. **B,C,H,I** also in Chiffon, Organza, Lace, Novelty Mesh. **E:** Stretch Knits only such as 4-Way Stretch. See Pick-A-Knit® Rule. Suitable for Overlock/Serger. **Lining A:** Cotton/Cotton Blends, Lining Fabric. **Netting H,I:** Stiff Net, Crinoline. **Interfacing A,D,F,H,I:** Lightweight fusible.

Notions: A: 10" (25cm) separating zipper, 2½ yds. (2.0m) of ¼" (6mm) wide boning.
B Elastic: ½ yd. (0.5m) of ¼" (6mm) wide. **C Elastic:** ¾ yd. (0.4m) of ¼" (6mm) wide.
E Elastic: 1¼ yds. (1.1m) of 1" (2.5cm) wide. **D,F,G:** Hooks (thread loop).
F: 12 pieces of 48" (122cm) marabou; Polyfil. **H,I:** Waistband hook and bar.

Sizes	6	8	10	12	14	16	18	20	22	24		
European	32	34	36	38	40	42	44	46	48	50		
Corset A	45***	5/8	5/8	3/4	3/4	3/4	3/4	3/4	3/4	7/8	7/8	Yds.
	115cm**	0.5	0.5	0.7	0.7	0.7	0.7	0.7	0.7	0.7	0.8	m
Lining	45**	5/8	3/4	3/4	3/4	3/4	3/4	3/4	3/4	3/4	7/8	Yd.
	115cm**	0.5	0.7	0.7	0.7	0.7	0.7	0.7	0.7	0.7	0.8	m
Interfacing - 20" - 1½ yds. (51cm- 1.5m)												
Sleeve B	45***	5/8	5/8	5/8	5/8	5/8	5/8	5/8	5/8	5/8	3/4	Yd.
	115cm**	0.6	0.6	0.6	0.6	0.6	0.6	0.6	0.6	0.6	0.7	m
Sleeve C	45***	2	2	2½	2¼	2¼	2¼	2¼	2½	2½	2½	Yds.
	115cm**	1.9	1.9	2.0	2.0	2.1	2.1	2.1	2.1	2.2	2.2	m
Contrast	45***	5/8	5/8	5/8	5/8	5/8	5/8	5/8	3/4	3/4	3/4	Yd.
	115cm**	0.6	0.6	0.6	0.6	0.6	0.6	0.6	0.6	0.7	0.7	m
Collar D - 45*** - 3/8 yd. (115cm** - 0.4m); Interfacing - 20" - 5/8 yd. (51cm- 0.6m)												
Boy Shorts E	60***	5/8	5/8	5/8	5/8	5/8	3/4	3/4	3/4	1	1¼	Yds.
	150cm**	0.6	0.6	0.6	0.6	0.6	0.6	0.6	0.7	1.0	1.2	m
Marabou Decoration F - 45*** - 3/8 yd. (115cm** - 0.4m)												
Interfacing - 20" - 5/8 yd. (51cm- 0.6m)												
Bow Decoration G - 45*** - 1¾ yds. (115cm** - 1.3m)												
Skirt H	45***	1	1	1	1	1	1	1	1½	1½	1½	Yds.
	115cm**	1.0	1.0	1.0	1.0	1.0	1.0	1.0	1.0	1.0	1.1	m
Netting	60**	5/8	5/8	5/8	5/8	5/8	5/8	3/4	3/4	3/4	3/4	Yd.
	150cm*	0.6	0.6	0.6	0.6	0.6	0.6	0.6	0.7	0.7	0.7	m
Contrast H,I (Waistband)												
	45***	7/8	7/8	1	1	1	1½	1½	1¼	1¼	1½	Yds.
	115cm**	0.8	0.8	1.0	1.0	1.0	1.1	1.1	1.2	1.2	1.3	m
Interfacing - 20" - 1¾ yds. (51cm- 1.3m)												
Skirt I	45***	3¼	3¼	3¾	3¾	3¾	3½	3½	3¾	3¾	3¾	Yds.
	115cm**	3.0	3.0	3.0	3.1	3.1	3.2	3.2	3.4	3.4	3.5	m
Netting	60**	2½	2½	2½	2½	2½	2½	2½	2½	2½	2½	Yds.
	150cm*	2.3	2.3	2.3	2.3	2.3	2.3	2.3	2.3	2.3	2.4	m

Note: Please refer to the guidesheet for Finished Garment Measurements.

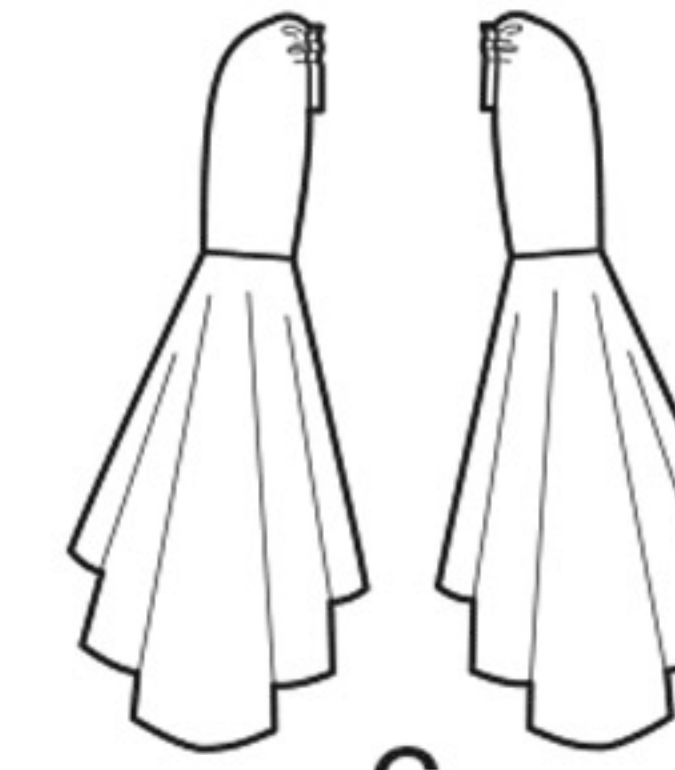
*without nap **with nap ***with or without nap



A



B



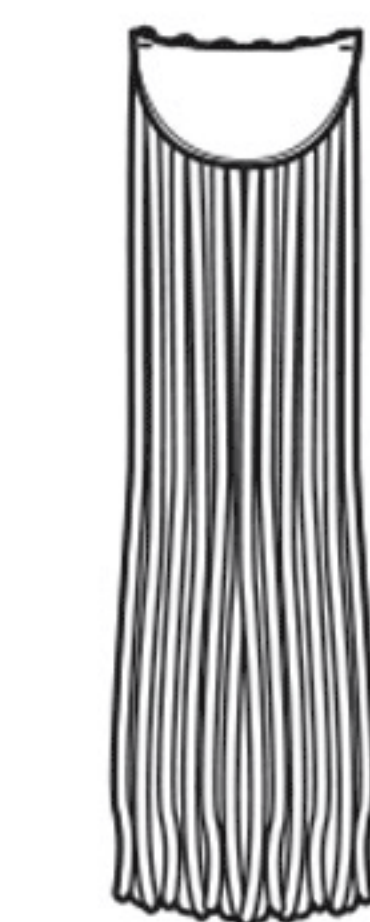
C



D



E



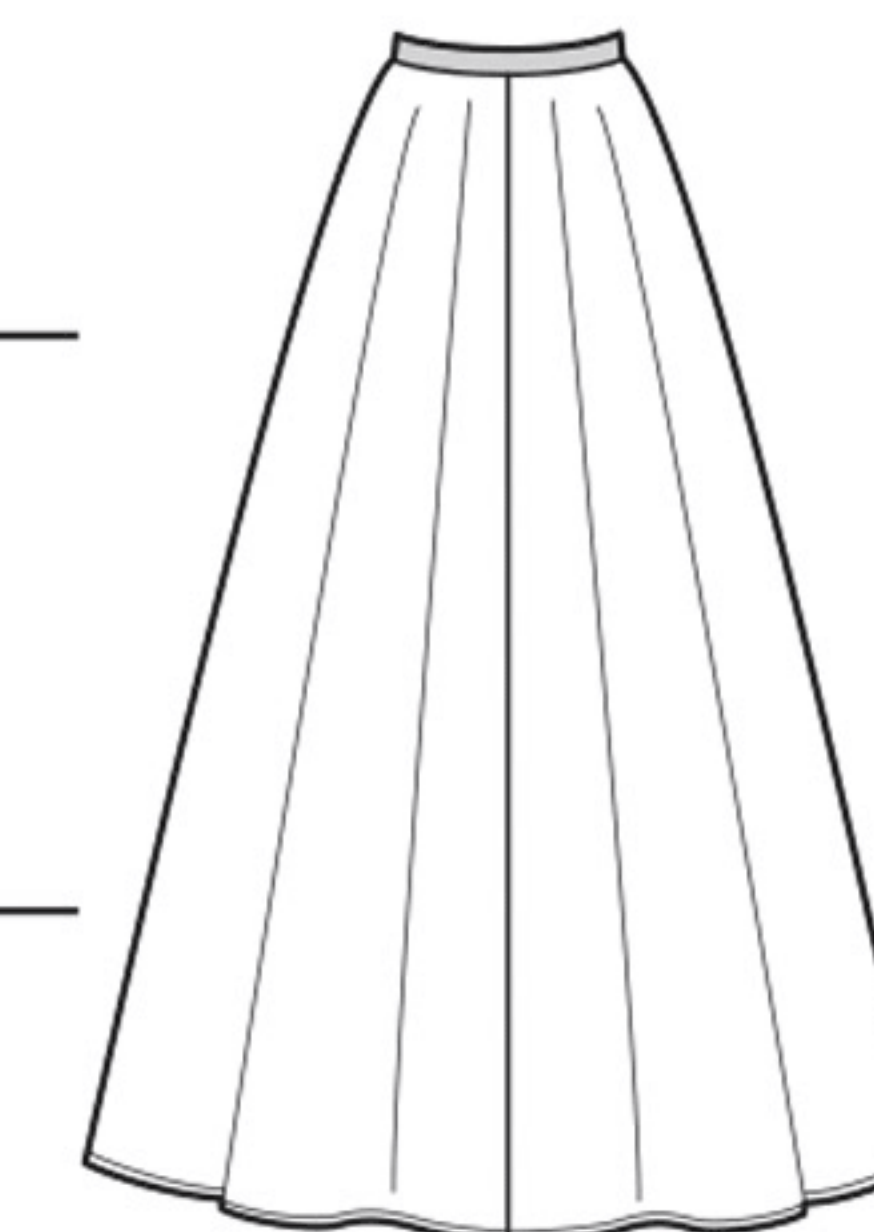
F



G



H



I