

S9556

Easy

MISSES' NURSING TOPS, PANTS, SHORTS AND BLANKET

Suggested Fabrics: Stretch Knits only such as Bamboo Knits, Interlock, Jersey. See Pick-A-Knit® Rule.

Notions: ½" (1.3cm) wide elastic: 1¼ yds. (1.2m) for **A,B**; 2¼ yds. (2.0m) for **C,D**.

C,D: 2¼ yds. (2.1m) of ⅝" (1.5cm) wide twill tape or ribbon. **E:** 4¾ yds. (4.4m) of medium rick rack.

Sizes	XS	S	M	L	XL
	6-8	10-12	14-16	18-20	22-24
European	32-34	36-38	40-42	44-46	48-50

BODY MEASUREMENTS: Select pattern size based on body measurements

Bust	30½-31½	32½-34	36-38	40-42	44-46	Ins.
Waist	23-24	25-26½	28-30	32-34	37-39	"
Hip-9" below waist	32½-33½	34½-36	38-40	42-44	46-48	"
Back-neck to waist	15½-15¾	16-16¼	16½-16¾	17-17¼	17½-17¾	"

Top A	60***	1%	1%	1¾	2%	2%	Yds.
Top B	60***	1%	1%	1%	1¾	1¾	Yds.
Pants C	60***	1½	1½	1%	1%	1%	Yds.
Shorts D	60***	⅞	⅞	1	1%	1%	Yds.

Blanket E - 60*** - 2% yds.

FINISHED GARMENT MEASUREMENTS (Includes Design and Wearing Ease)

A,B Bust	38½	41	45	49	53	Ins.
C,D Hip	35	37½	41½	45½	49½	"
D Leg Width	22	23	25	27	29	"
Finished back length from base of neck						
Top A,B	24½	25	25½	26	26½	Ins.
Finished side length from waist						
Pants C	37	37½	38	38½	39	Ins.
Shorts D	13½	14	14½	15	15½	"

*without nap **with nap ***with or without nap

Facile

HAUTS, PANTALON, SHORT ET COUVERTURE POUR L'ALLAITEMENT POUR JEUNES FEMMES

Tissus Conseillés: Tricot Extensibles seulement tel que Tricot de Bambou, Interlock, Jersey. Voyez la Règle-Pour-Choisir-Un-Tricot®.

Mercerie: Élastique de 1.3cm de large: 1.2m pour **A,B**; 2.0m pour **C,D**.

C,D: 2.1m de talonnette de coton ou de ruban de 1.5cm de large. **E:** 4.4m de croquet moyen.

Tailles	TP/XP	P	M	G	TG/XG
Françaises	34-36	38-40	42-44	46-48	50-52
Européen	32-34	36-38	40-42	44-46	48-50

MESURES DU CORPS: Choisissez la taille du patron basée sur les mesures du corps

Poitrine	78-80	83-87	92-97	102-107	112-117	cm
Taille	58-61	64-67	71-76	81-87	94-99	"
Hanches (23cm au-dessous de la taille)	83-85	88-92	97-102	107-112	117-122	cm
Dos du cou à la taille	39.5-40	40.5-41.5	42-42.5	43-44	44-44.5	"

Haut A	150cm**	1.5	1.5	1.6	1.9	2.0	m
Haut B	150cm**	1.4	1.5	1.5	1.6	1.6	m
Pantalon C	150cm**	1.4	1.4	1.8	1.8	1.8	m
Short D	150cm**	0.8	0.8	1.0	1.0	1.1	m

Couverture E - 150cm** - 2.4m.

MESURES DES VÊTEMENTS FINI (Motif et aisance de port compris)

A,B Poitrine	98	104	115	125	135	cm
C,D Hanches	89	95	103	116	126	"
D Largeur de la Jambe	56	58.5	63.5	68.5	73.5	"
Longueur finie – dos, votre nuque à l'ourlet						
Haut A,B	62	63.5	65	66	67.5	cm
Longueur finie – côté, taille à l'ourlet						
Pantalon C	94	95	96.5	98	99	cm
Short D	34.5	35.5	37	38	39.5	"

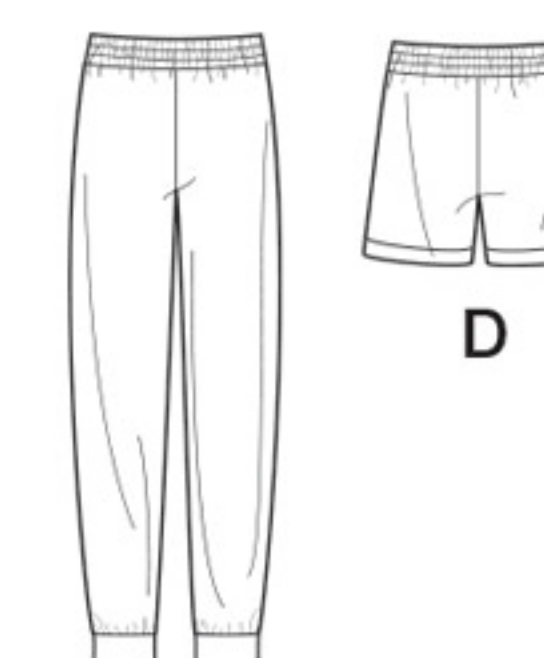
*sans sens **avec sens ***avec ou sans sens



A

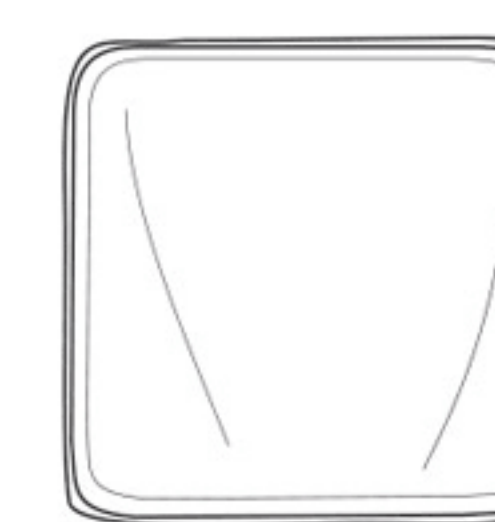


B



D

C



E