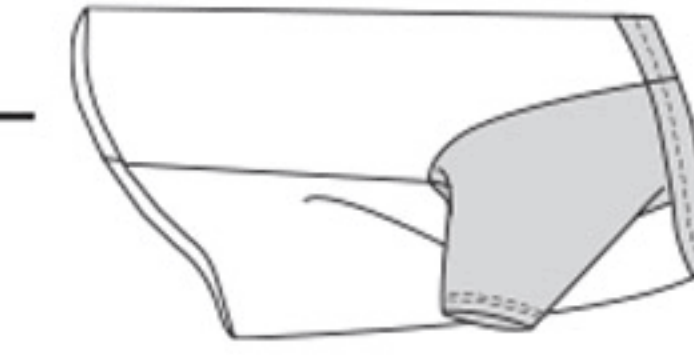


S9532

Easy

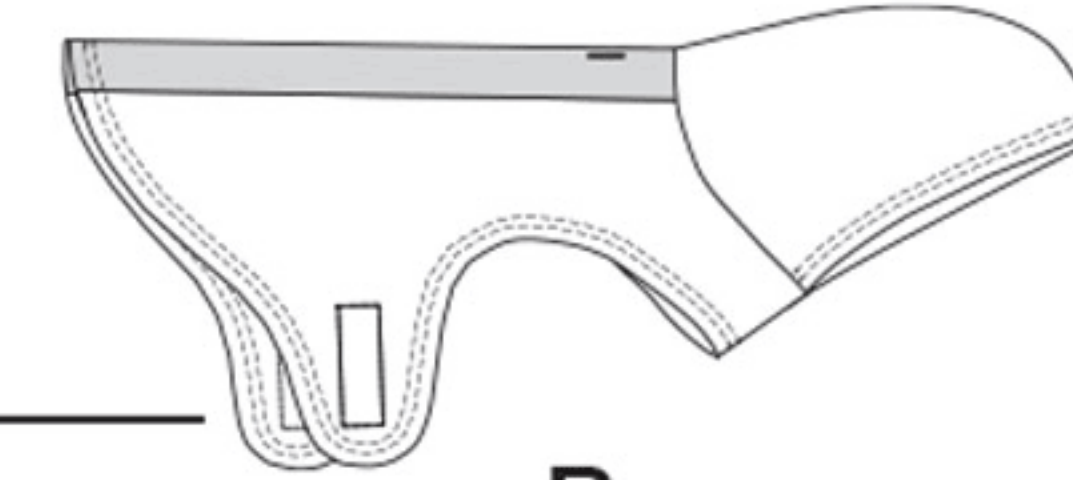
PET CLOTHES

Fabrics: **A:** Stretch Knits Only (with 20% stretch across the grain) such as Interlock, Jersey.
B,C: Sweatshirt Fleece, Polarfleece®.



A

Notions: **A,B:** Optional double ball-point needle. **Also for B:** 1/8 yd. (0.2m) 1" (2.5cm) hook and loop tape. **C:** Separating zipper: 12" (31cm) for size XS, 20" (51cm) for sizes S-M-L, 28" (71cm) for size XL.



B

PET SIZES	XS	S	M	L	XL
-----------	----	---	---	---	----

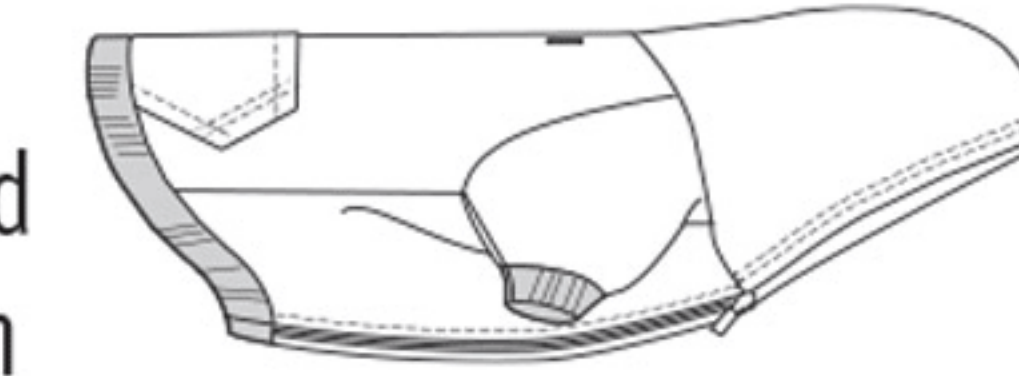
Coat A

Fabric 1 (Coat)

60"*	3/8	3/8	1/2	5/8	3/4	Yd
150cm*	0.4	0.4	0.5	0.6	0.7	m

Fabric 2 (Sleeves, Band)

60"*	1/4	1/4	3/8	3/8	1/2	Yd
150cm*	0.3	0.3	0.4	0.4	0.5	m



C

Coat B

Fabric 1 (Coat)

60"*	3/8	1/2	5/8	3/4	7/8	Yd
150cm*	0.4	0.5	0.6	0.7	0.8	m

Fabric 2 (Band)

60"	3/8	1/2	5/8	5/8	3/4	Yd
150cm	0.4	0.5	0.6	0.6	0.7	m

Coat C

Fabric 1 (Coat)

60"*	1/2	1/2	5/8	7/8	1	Yd
150cm*	0.5	0.5	0.6	0.8	1.0	m

Fabric 2 (Sleeves, Band)

43"*	1/8	1/4	1/4	1/4	3/8	Yd
109cm*	0.2	0.3	0.3	0.3	0.4	m
60"*	1/8	1/4	1/4	1/4	1/4	Yd
150cm*	0.2	0.3	0.3	0.3	0.3	m

*with nap **without nap