

S9483

14 PIECES/PIEZAS

BABIES' BATH SET

Fabrics: Double-Faced Fleece, Fleece, Interlock, Minky Fleece, Terry Knit. **D Wash Glove** in Terry Knit. Not suitable for sleepwear. Extra fabric needed to match plaids, stripes or one-way design fabrics.

Notions: Thread. **A,C:** two pkgs. of ½" (1.3cm) extra-wide double fold bias tape. **Also for A:** ½ yd. (0.50m) of 1" (2.5cm) wide elastic. **B,D:** One pkg. of ½" (1.3cm) extra-wide double fold bias tape. **Also for B:** Two ⅜" (1cm) buttons, purchased appliqué, ⅜ yd. of lace trim (opt.). **Also for C,D:** Purchased appliqué.

Sizes	XXS	XS	S	M	L
	—	1-3	6	12	18

A Hooded Robe

60"***	⅝	¾	⅞	⅞	1	Yd.
--------	---	---	---	---	---	-----

B Pullover Hoodie

60"***	⅝	⅝	¾	¾	⅞	Yd.
--------	---	---	---	---	---	-----

Interfacing- ⅜ yd. of 20" to 25" lightweight fusible

C Hooded Towel Wrap- 1 yd. of 60"***

D Wash Glove- ¾ yd. of 60"***

FINISHED GARMENT MEASUREMENTS

Finished back length from base of neck:

A	14	16	18	20	22	Ins.
B	14½	16½	18½	20½	22½	"

BÉBÉS: SET POUR LE BAIN / BEBÉS: SET DE BAÑO

Tailles/ Tallas	TTP/XXP	TP/XP	P	M	G
	—	1-3	6	12	18

A Peignoir à capuche/ A Bata con capucha

150cm**	0.60	0.70	0.80	0.80	1.00	m
---------	------	------	------	------	------	---

B Peignoir à capuche pullover/ B Bata con capucha pullover

150cm**	0.60	0.60	0.70	0.70	0.80	m
---------	------	------	------	------	------	---

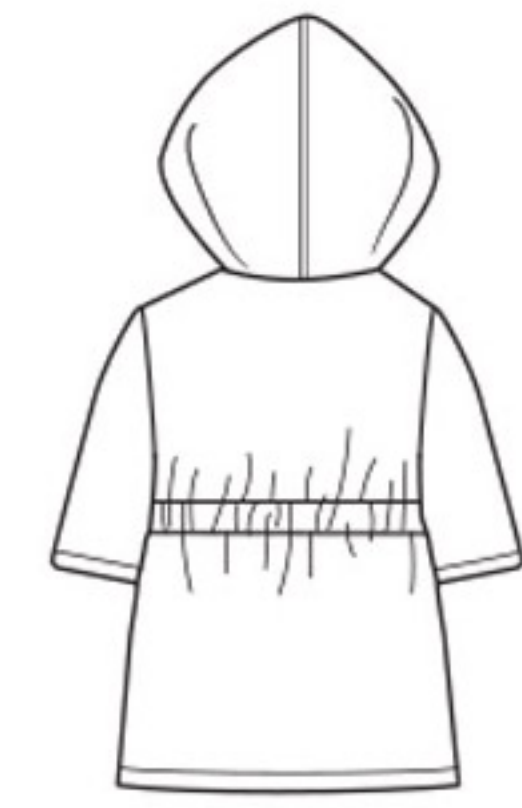
Entoilage- 0.40m de 51cm à 64cm, léger, thermocollant

Entretela- 0.40m de 51cm a 64cm, ligera, termoadhesiva

C Serviette enveloppante à capuche/ C Toalla envolvente con capucha-

0.90m de 150cm**

D Débarbouillette/ D Toallita- 0.70m de 150cm**



A



B



C



D

*without nap **with nap ***with or without nap

*sans sens **avec sens ***avec ou sans sens

*sin pelusa **con pelusa ***sin o con pelusa

Instrucciones de costura en Español en el Interior del Patrón.