

# S9482

12 PIECES/PIEZAS

## BOYS' AND MEN'S TRACKSUIT

**Fabrics:** Sized for stretch knits only such as: Double Knit, Ponte, Activewear Knits, Sweatshirt Fleece, Terry Knit, Spandex Blends. See Pick-A-Knit® Rule. Suitable for Overlock/Serger. Extra fabric needed to match plaids, stripes or one-way design fabrics.

**Notions:** Thread. **A:** 23" (58.5cm) (adjust to fit) separating zipper for Men's sizes, 17" (43cm) (adjust to fit) separating zipper for Boys' sizes, hem or twill tape (opt.) **B,C:** 1½ yds. (1.40m) of 1" (2.5cm) elastic for Men's sizes, ¾ yd. (0.70m) of ¾" (2cm) elastic for Boys' sizes.

Sizes	BOYS'			MEN'S				Yds.
	S	M	L	S	M	L	XL	
<b>A Hoodie</b>								
60"***	1	1	1½	1¾	1¾	1¾	1¾	
<b>Interfacing-</b> ¾ yd. of 20" to 25" lightweight fusible								
<b>B Pants</b>								
60"***	¾	1	1½	2	2	2	2	
<b>C Shorts</b>								
60"***	¾	¾	¾	1½	1¼	1¾	1¾	

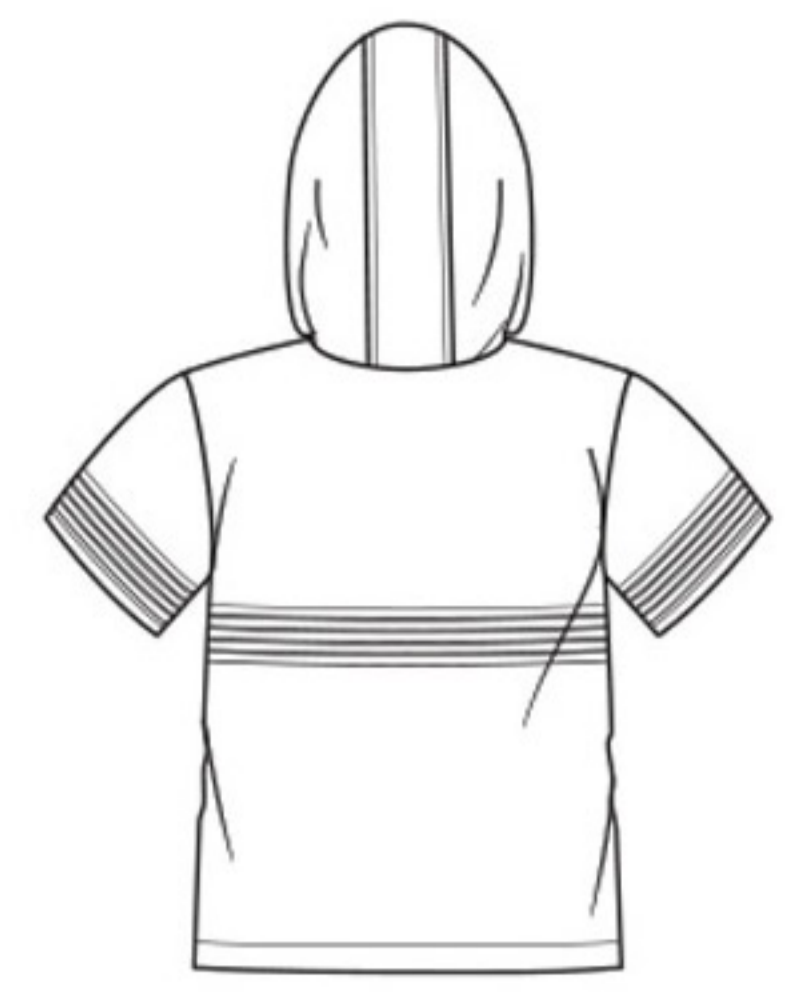
### FINISHED GARMENT MEASUREMENTS

<b>A Chest</b>	26½	28½	30½	39½	43½	47½	51½	Ins.
<b>B,C Hip</b>	25½	27½	29½	40	44	48	52	"
<b>Finished back length from base of neck:</b>								
<b>A Hoodie</b>	16	16½	17	24½	25	25½	26	Ins.
<b>B Pants Side Length</b>	25	28	31	41	41½	42	42½	Ins.
<b>C Shorts Side Length</b>	12½	13¼	14	19	19½	20	20½	Ins.
<b>C Leg Width</b>	13½	14	14½	21½	23½	25½	27½	"

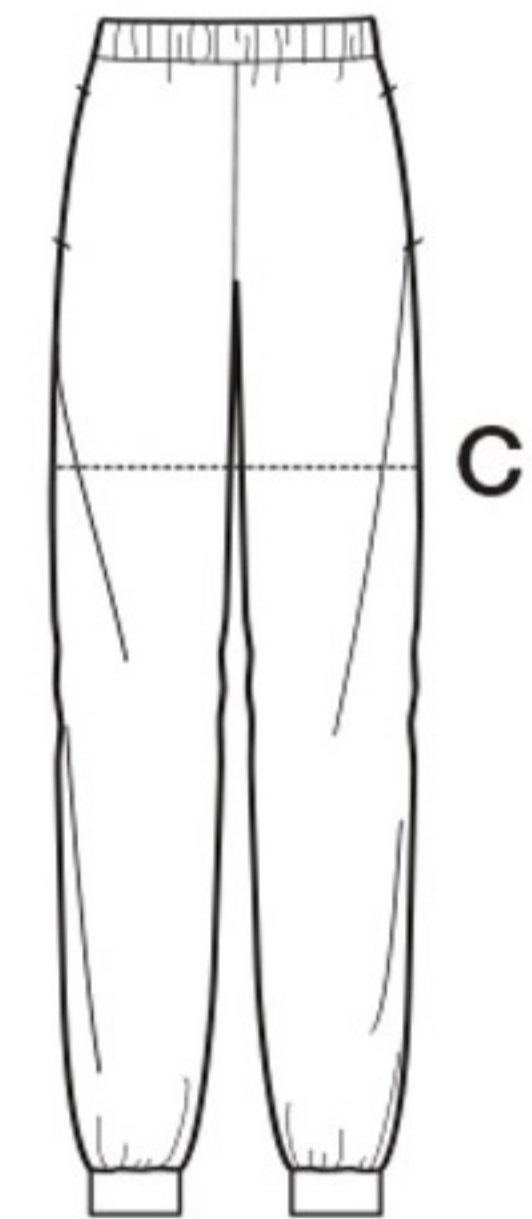
### GARÇONNETS ET HOMMES: SURVÊTEMENT / NIÑOS Y HOMBRES: CHÁNDAL

Tailles/ Tallas	GARÇONNETS/ NIÑOS			HOMMES/ HOMBRES				m
	P	M	G	P	M	G	TG/XG	
<b>A Sweat-shirt avec Capuche/ A Sudaderas con Capucha</b>								
150cm**	1.00	1.00	1.10	1.60	1.80	1.80	1.80	
<b>Entoilage-</b> 0.80m de 51cm à 64cm, léger, thermocollant								
<b>Entretela-</b> 0.80m de 51cm a 64cm, ligera, termoadhesiva								
<b>B Pantalon/ B Pantalón</b>								
150cm**	0.80	1.00	1.10	1.90	1.90	1.90	1.90	
<b>C Short</b>								
150cm**	0.60	0.60	0.60	1.10	1.20	1.30	1.30	

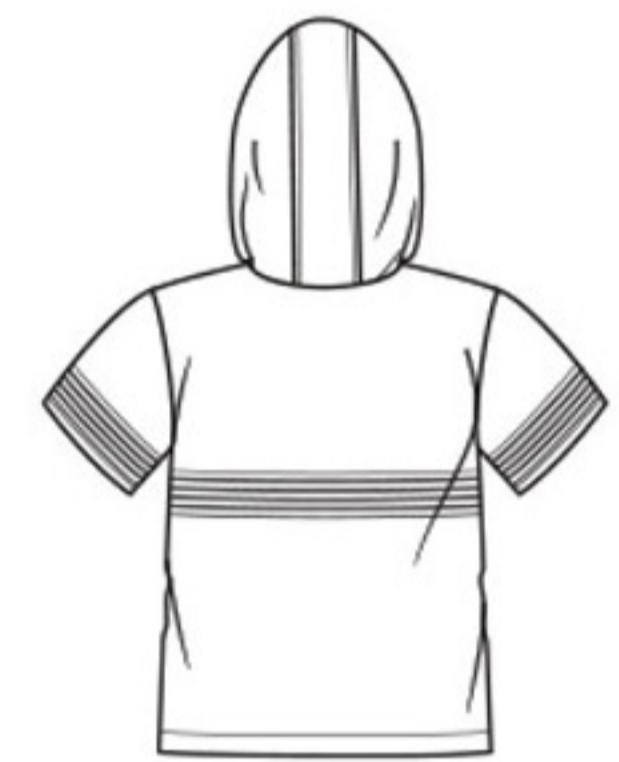
\*without nap \*\*with nap \*\*\*with or without nap \*sans sens \*\*avec sens \*\*\*avec ou sans sens  
 \*sin pelusa \*\*con pelusa \*\*\*sin o con pelusa



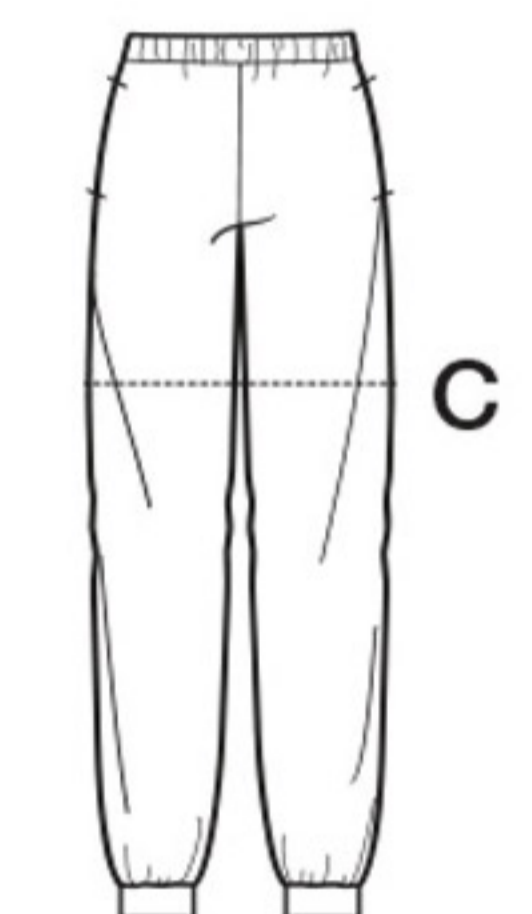
A



B



A



B

**Instrucciones de costura en Español en el Interior del Patrón.**