

S9436 9 PIECES

ADULTS' AND CHILDREN'S APRONS

Fabrics: A,B,C,D and Contrasts C,D in Cotton/Cotton Blends, Linen, Lightweight Denim, Chambray, Twill. Extra fabric needed to match plaids, stripes or one-way design fabrics.

Notions: Thread. **A,D:** $\frac{3}{8}$ yd. (0.40m) of $\frac{1}{4}$ " (6mm) wide elastic (for gathered pockets).

Sizes	CHILDREN				ADULTS				
	XS	S	M	L	XS	S	M	L	XL
	4-5	6-8	10-12	14-16	—	—	—	—	—

A,B,C,D Interfacing- 20" to 25" (51cm to 64cm) lightweight fusible - $\frac{3}{4}$ yd. (0.70m) for Children's sizes and 1 yd. (1.0m) for Adult sizes.

A Apron

45"***	1	1 $\frac{1}{8}$	1 $\frac{1}{8}$	1 $\frac{1}{8}$	1 $\frac{1}{4}$	1 $\frac{1}{4}$	1 $\frac{1}{4}$	1 $\frac{5}{8}$	1 $\frac{3}{4}$	Yds.
115cm**	1.00	1.10	1.10	1.10	1.30	1.30	1.30	1.60	1.80	m

B Apron

45"***	1	1 $\frac{1}{8}$	1 $\frac{1}{4}$	1 $\frac{1}{4}$	1 $\frac{3}{8}$	1 $\frac{3}{8}$	1 $\frac{3}{8}$	1 $\frac{3}{4}$	1 $\frac{7}{8}$	Yds.
115cm**	1.00	1.10	1.20	1.20	1.30	1.30	1.30	1.60	1.80	m

C Apron

45"***	1	1	1	1 $\frac{1}{8}$	1 $\frac{1}{4}$	1 $\frac{1}{4}$	1 $\frac{1}{4}$	1 $\frac{5}{8}$	1 $\frac{3}{4}$	Yds.
115cm**	1.00	1.00	1.00	1.00	1.20	1.20	1.20	1.50	1.50	m

Contrast (Bands and Pocket)- $\frac{1}{2}$ yd. of 45"*** (0.50m of 115cm**)

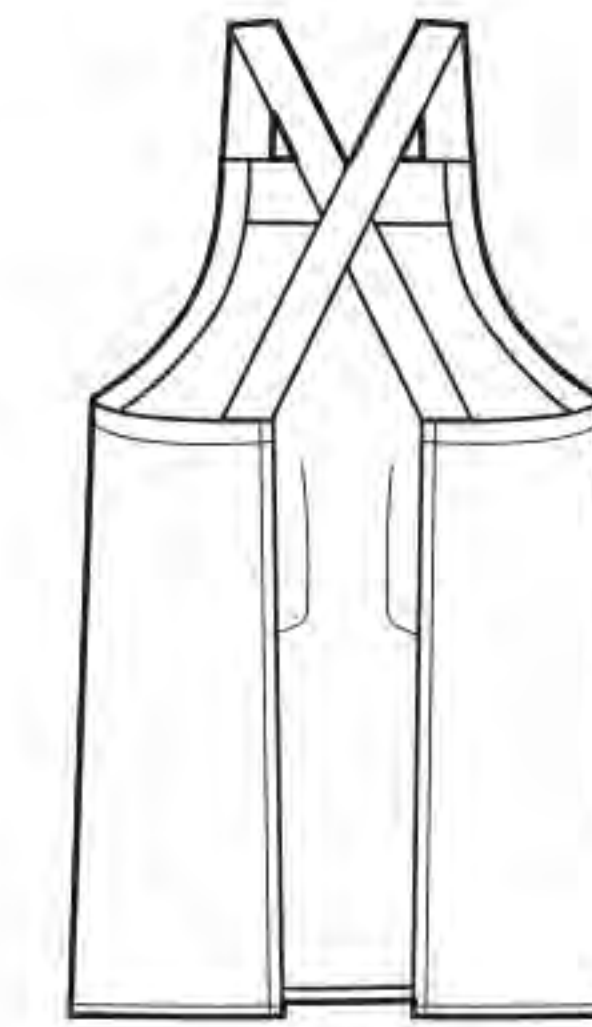
D Apron

45"***	1 $\frac{1}{8}$	1 $\frac{1}{8}$	1 $\frac{1}{8}$	1 $\frac{1}{8}$	1 $\frac{1}{4}$	1 $\frac{1}{4}$	1 $\frac{3}{8}$	1 $\frac{5}{8}$	1 $\frac{3}{4}$	Yds.
115cm**	1.10	1.10	1.10	1.10	1.20	1.20	1.30	1.50	1.50	m

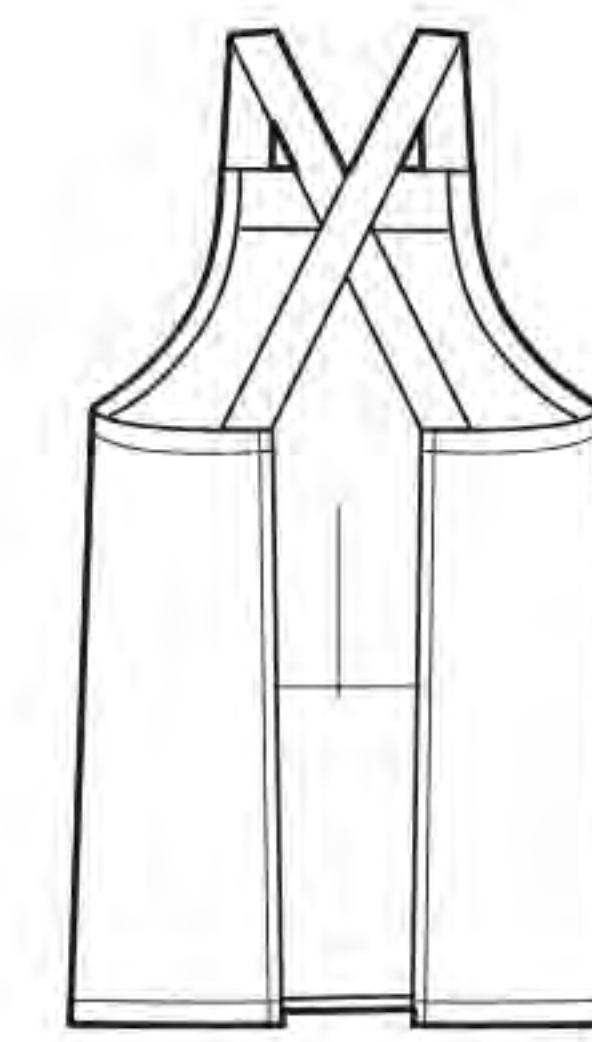
Contrast (Ruffles)

45"***	1 $\frac{1}{4}$	1 $\frac{1}{4}$	1 $\frac{1}{4}$	1 $\frac{1}{4}$	1 $\frac{5}{8}$	1 $\frac{5}{8}$	1 $\frac{5}{8}$	1 $\frac{5}{8}$	1 $\frac{5}{8}$	Yds.
115cm**	1.20	1.20	1.20	1.20	1.40	1.40	1.40	1.40	1.40	m

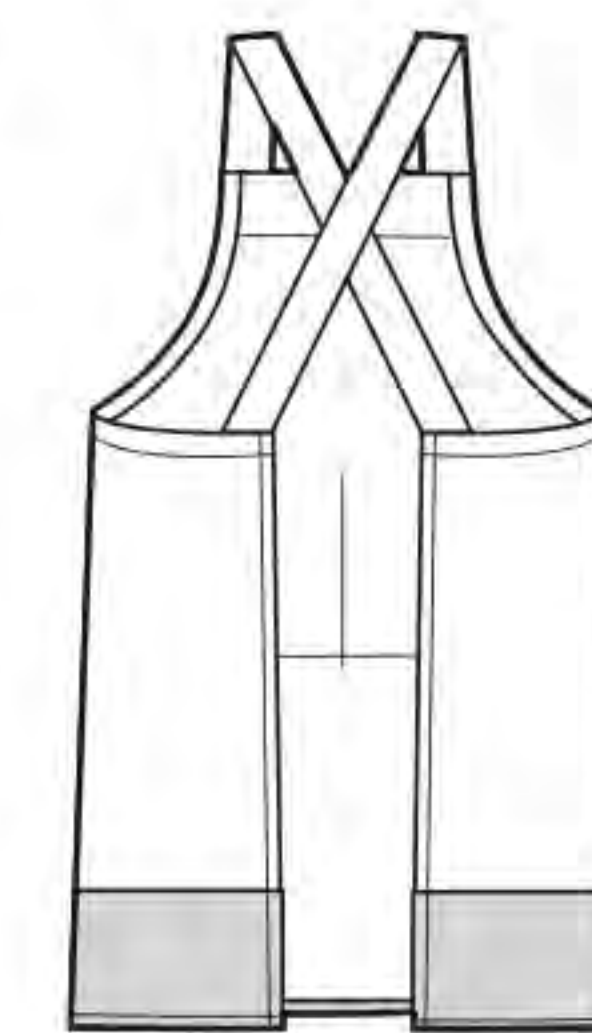
*without nap **with nap ***with or without nap



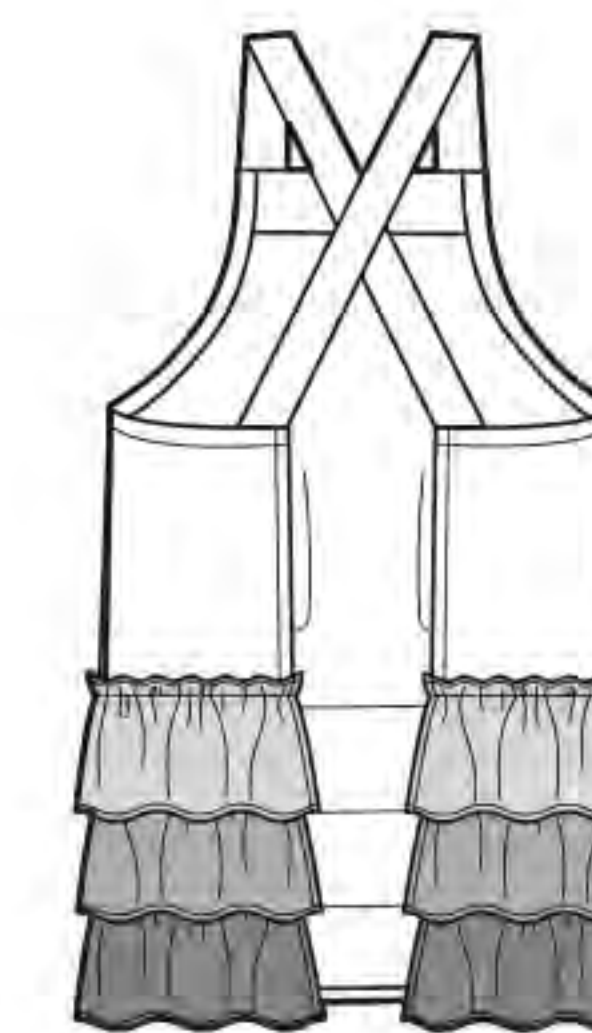
A



B



C



D