

S9338

12 PIECES/PIEZAS

MEN'S PULL-ON PANTS OR SHORTS

Fabrics: Denim, Twill, Poplin, Ripstop, Tencel. **Shorts** also in Interlock, Faux Leather. Extra fabric needed to match plaids, stripes or one-way design fabrics.

Notions: Thread, 2⁵/₈ yds. (2.4m) of 1" (2.5cm) wide elastic, 2¹/₈ yds. (2.0m) of ³/₈" (1cm) wide twill tape.

Sizes	XS (30-32)	S (34-36)	M (38-40)	L (42-44)	XL (46-48)	
-------	---------------	--------------	--------------	--------------	---------------	--

A Pants

45 ^{***}	2 ¹ / ₂	2 ³ / ₄	3 ¹ / ₈	3 ¹ / ₈	3 ¹ / ₈	Yds.
60 ^{***}	2	2 ¹ / ₈	2 ¹ / ₈	2 ³ / ₈	2 ⁵ / ₈	"

Interfacing- ³/₈ yd. of 20" to 25" lightweight fusible

B Short

45 ^{***}	1 ⁵ / ₈	1 ⁵ / ₈	1 ⁵ / ₈	1 ³ / ₄	1 ⁷ / ₈	Yds.
60 ^{***}	1 ³ / ₈	1 ³ / ₈	1 ¹ / ₂	1 ⁵ / ₈	1 ³ / ₄	"

Interfacing- ¹/₄ yd. of 20" to 25" lightweight fusible

FINISHED GARMENT MEASUREMENTS

A,B Hip	37	41	45	46	53	Ins.
Finished back length from base of neck:						
A Side Length	39	41	41 ¹ / ₂	42	42 ¹ / ₂	Ins.
A Leg Width	11 ¹ / ₂	12 ¹ / ₂	14	15 ¹ / ₂	16 ¹ / ₂	"

HOMMES: PANTALON PULL-ON OU SHORT

HOMBRES: PANTALÓN PULL-ON O SHORT

Tailles/ Tallas	TP/XP	P	M	G	TG/XG	
Françaises/ Eur	(40-42)	(44-46)	(48-50)	(52-54)	(56-58)	

A Pantalon/ A Pantalón

115cm ^{**}	2.30	2.60	2.90	2.90	2.90	m
150cm ^{**}	1.90	2.00	2.00	2.20	2.40	"

Entoilage- 0.40m de 51cm à 64cm, léger, thermocollant

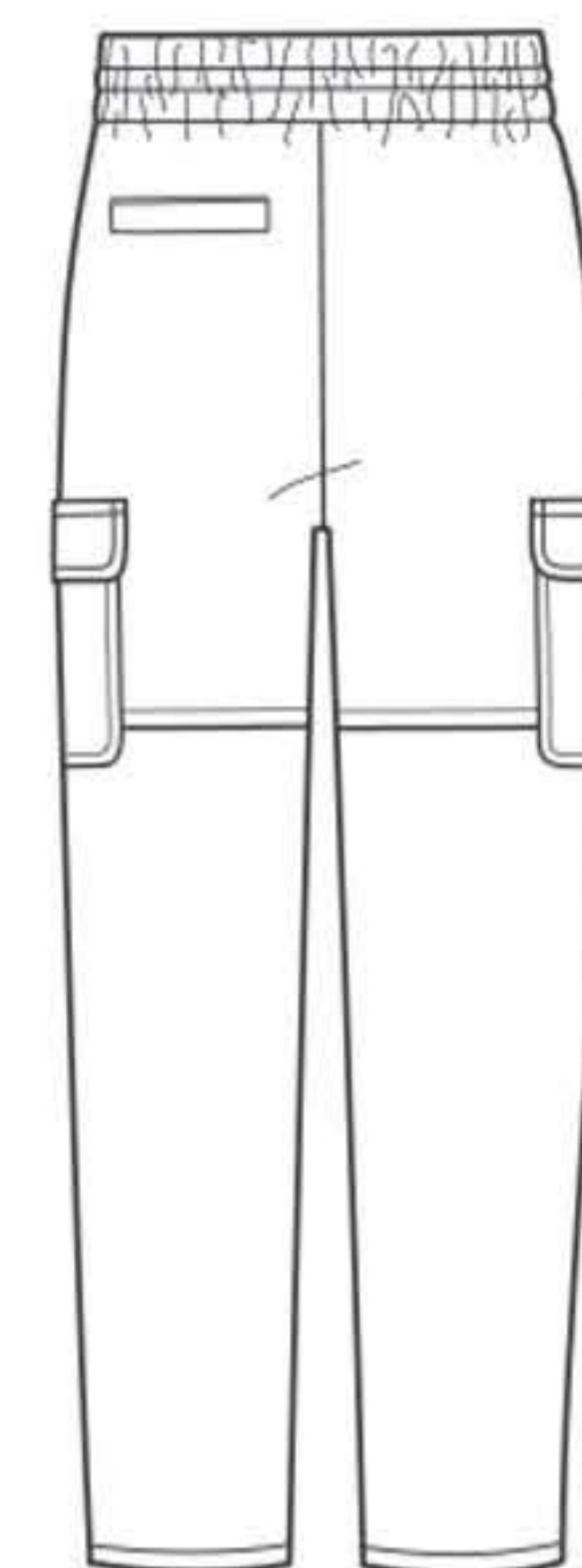
Entretela- 0.40m de 51cm a 64cm, ligera, termoadhesiva

B Short

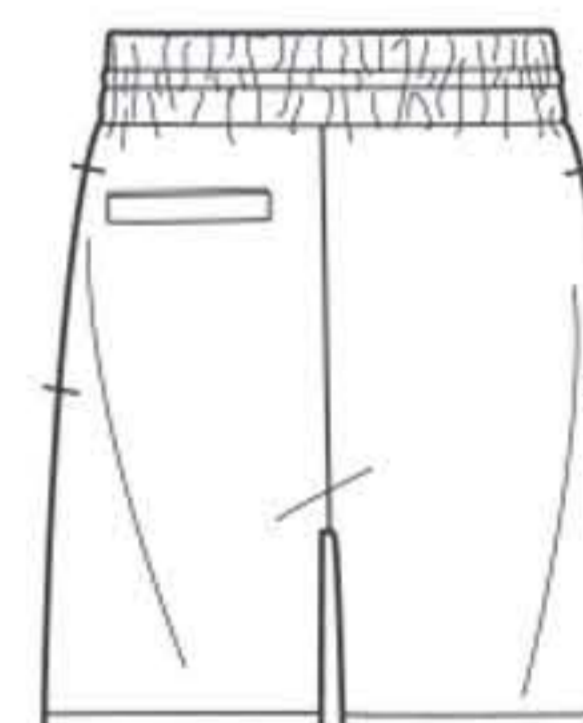
115cm ^{**}	1.50	1.50	1.50	1.60	1.80	m
150cm ^{**}	1.30	1.30	1.30	1.50	1.60	"

Entoilage- 0.30m de 51cm à 64cm, léger, thermocollant

Entretela- 0.30m de 51cm a 64cm, ligera, termoadhesiva



A



B

*without nap **with nap ***with or without nap

*sin pelusa **con pelusa ***con o sin pelusa

*sans sens **avec sens ***avec ou sans sens

Instrucciones de costura en Español en el Interior del Patrón.