

# S9295

12 PIECES/PIEZAS

## MISSES' TOP

**Fabrics:** Cotton Blends, Crepe, Broadcloth, Chambray, Gingham. Extra fabric needed to match plaids, stripes or one-way design fabrics.

**Notions:** Thread, six 5/8" (1.5cm) buttons.

Sizes	6	8	10	12	14	16	18	20	22
European	32	34	36	38	40	42	44	46	48

A										
45"***	1 3/4	1 3/4	1 7/8	1 7/8	1 7/8	2	2	2	2 1/2	Yd.
60"***	1 1/2	1 1/2	1 1/2	1 1/2	1 1/4	1 1/4	1 1/4	1 1/2	1 1/2	"
<b>Fusible Interfacing A</b> - 18, 20" of lightweight										
	1 1/2	1 1/2	1 1/2	1 1/2	1 1/2	1 1/2	1 1/2	1 1/2	1 1/2	Yd.

B										
45"***	2 1/2	2 1/2	2 1/2	2 1/2	2 1/2	2 5/8	2 5/8	2 5/8	2 5/8	Yd.
60"***	1 3/4	1 3/4	1 3/4	1 3/4	1 7/8	1 7/8	1 7/8	2 3/8	2 3/8	"
<b>Fusible Interfacing B</b> - 18, 20" of lightweight										
	1 1/2	1 1/2	1 1/2	1 1/2	1 1/2	1 1/2	1 1/2	1 1/2	1 1/2	Yd.

C										
45"***	2	2	2 1/8	2 1/8	2 1/8	2 1/4	2 1/4	2 1/4	2 1/4	Yd.
60"***	1 3/8	1 3/8	1 3/8	1 3/8	1 3/8	1 3/8	1 1/2	1 3/4	1 3/4	"
<b>Fusible Interfacing C</b> - 18, 20" of lightweight										
	1 1/4	1 1/4	1 1/4	1 1/4	1 1/2	1 1/2	1 1/2	1 1/2	1 1/2	Yd.

### FINISHED GARMENT MEASUREMENTS

<b>A,B,C Width</b>	39 1/2	40 1/2	41 1/2	43	45	47	49	51	53	In.
<b>Finished back length from base of neck:</b>										
<b>A,B,C</b>	23	23 1/4	23 1/2	23 3/4	24	24 1/4	24 1/2	24 3/4	25	In.

### JEUNES FEMMES: HAUT / SEÑORITAS: TOP

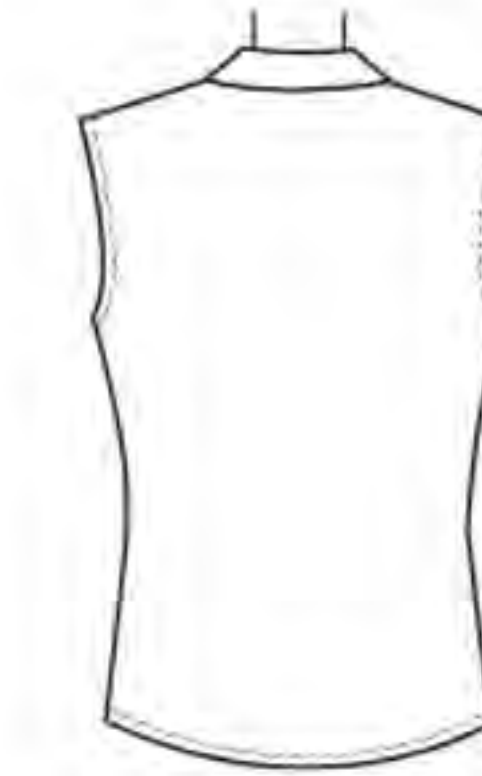
Tailles/ Tallas	6	8	10	12	14	16	18	20	22
Françaises	34	36	38	40	42	44	46	48	50
Europeas	32	34	36	38	40	42	44	46	48

A										
115cm***	1.60	1.60	1.80	1.80	1.80	1.90	1.90	1.90	2.00	m
150cm***	1.10	1.10	1.10	1.10	1.20	1.20	1.20	1.40	1.40	"
<b>Entoilage Thermocollant A / Entretela Termoadhesiva A</b> - 46, 51cm de léger / ligera										
	1.10	1.10	1.10	1.10	1.40	1.40	1.40	1.40	1.40	m

B										
115cm***	2.30	2.30	2.30	2.30	2.30	2.40	2.40	2.40	2.40	m
150cm***	1.60	1.60	1.60	1.60	1.80	1.80	1.80	2.20	2.20	"
<b>Entoilage Thermocollant B / Entretela Termoadhesiva B</b> - 46, 51cm de léger / ligera										
	1.10	1.10	1.10	1.10	1.40	1.40	1.40	1.40	1.40	m

C										
115cm***	1.90	1.90	2.00	2.00	2.00	2.10	2.10	2.10	2.10	m
150cm***	1.30	1.30	1.30	1.30	1.30	1.30	1.40	1.60	1.60	"
<b>Entoilage Thermocollant C / Entretela Termoadhesiva C</b> - 46, 51cm de léger / ligera										
	1.20	1.20	1.20	1.20	1.40	1.40	1.40	1.40	1.40	m

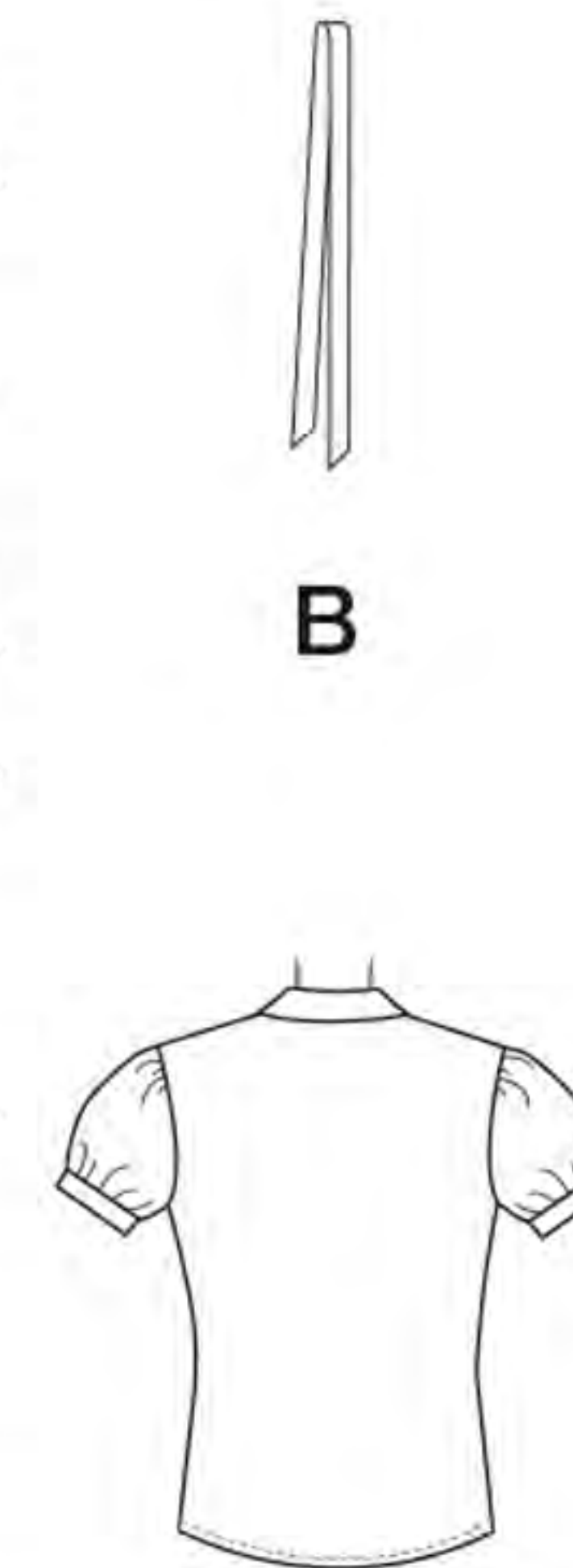
\*without nap \*\*with nap \*\*\*with or without nap \*sans sens \*\*avec sens \*\*\*avec ou sans sens  
 \*sin pelusa \*\*con pelusa \*\*\*sin o con pelusa



A



B



C

Instrucciones de costura en Español en el Interior del Patrón.