

S9294 8 PIECES/PIEZAS

MISSES' DRESS

Fabrics: Cotton Blends, Broadcloth, Sateen, Border Prints. Extra fabric needed to match plaids, stripes or one-way design fabrics.

Notions: Thread, one hook and eye, one 18" (45cm) zipper.

Sizes	6	8	10	12	14	16	18	20	22	
European	32	34	36	38	40	42	44	46	48	

A (Border Prints)										
45"	3 $\frac{7}{8}$	4	4	4	4 $\frac{1}{8}$	4 $\frac{1}{4}$	4 $\frac{3}{8}$	4 $\frac{1}{2}$	4 $\frac{5}{8}$	Yd.
60"	2 $\frac{3}{4}$	2 $\frac{7}{8}$	2 $\frac{7}{8}$	2 $\frac{7}{8}$	2 $\frac{7}{8}$	3	3	3 $\frac{1}{8}$	3 $\frac{1}{8}$	"

A (Other Fabrics)										
45"	3 $\frac{3}{8}$	3 $\frac{3}{8}$	3 $\frac{3}{8}$	3 $\frac{1}{2}$	3 $\frac{1}{2}$	3 $\frac{5}{8}$	3 $\frac{5}{8}$	3 $\frac{3}{4}$	3 $\frac{3}{8}$	Yd.
60"	2 $\frac{3}{4}$	2 $\frac{3}{4}$	2 $\frac{3}{4}$	2 $\frac{7}{8}$	2 $\frac{7}{8}$	3	3	3	3 $\frac{1}{8}$	"

B (Border Prints)										
45"	3 $\frac{7}{8}$	4	4	4	4 $\frac{1}{8}$	4 $\frac{1}{4}$	4 $\frac{3}{8}$	4 $\frac{1}{2}$	4 $\frac{5}{8}$	Yd.
60"	2 $\frac{3}{4}$	2 $\frac{7}{8}$	2 $\frac{7}{8}$	2 $\frac{7}{8}$	2 $\frac{7}{8}$	3	3	3 $\frac{1}{8}$	3 $\frac{1}{8}$	"

B (Other Fabrics)										
45"	3 $\frac{3}{8}$	3 $\frac{3}{8}$	3 $\frac{3}{8}$	3 $\frac{3}{8}$	3 $\frac{1}{2}$	3 $\frac{5}{8}$	3 $\frac{3}{4}$	3 $\frac{3}{4}$	3 $\frac{3}{8}$	Yd.
60"	2 $\frac{3}{4}$	2 $\frac{3}{4}$	2 $\frac{3}{4}$	2 $\frac{7}{8}$	2 $\frac{7}{8}$	3	3	3	3 $\frac{1}{8}$	"

Sew-In Interfacing A,B - 18, 20" - $\frac{1}{2}$ yd. of lightweight

Lining A,B										
45"	$\frac{3}{4}$	$\frac{3}{4}$	$\frac{3}{4}$	$\frac{3}{4}$	$\frac{7}{8}$	$\frac{7}{8}$	$\frac{7}{8}$	$\frac{7}{8}$	1	Yd.

FINISHED GARMENT MEASUREMENTS

A,B Width	87 $\frac{1}{2}$	88 $\frac{1}{2}$	89 $\frac{1}{2}$	91	93	95	97	99	101	In.
Finished back length from base of neck:										
A,B	40 $\frac{1}{2}$	40 $\frac{3}{4}$	41	41 $\frac{1}{4}$	41 $\frac{1}{2}$	41 $\frac{3}{4}$	42	42 $\frac{1}{4}$	42 $\frac{1}{2}$	In.

JEUNES FEMMES: ROBE / SEÑORITAS: VESTIDO

Tailles/ Tallas	6	8	10	12	14	16	18	20	22	
Françaises	34	36	38	40	42	44	46	48	50	
Europeas	32	34	36	38	40	42	44	46	48	

A (Imprimé à Bordure) / A (Borde Estampado)										
115cm**	3.60	3.70	3.70	3.70	3.80	3.90	4.00	4.20	4.30	m
150cm**	2.60	2.70	2.70	2.70	2.70	2.80	2.80	2.90	2.90	"

A (Autres Tissus) / A (Otras Telas)										
115cm***	3.10	3.10	3.10	3.20	3.20	3.40	3.40	3.50	3.60	m
150cm***	2.60	2.60	2.60	2.70	2.70	2.80	2.80	2.80	2.90	"

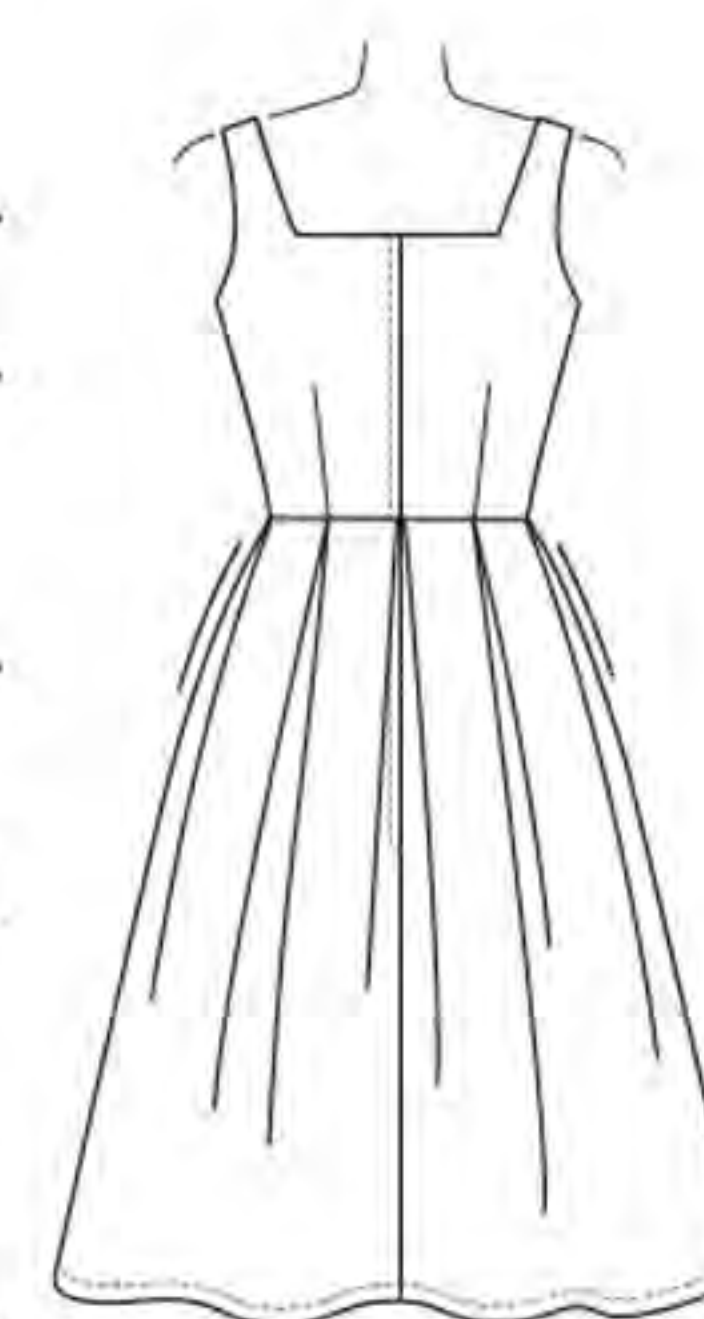
B (Imprimé à Bordure) / B (Borde Estampado)										
115cm**	3.60	3.70	3.70	3.70	3.80	3.90	4.00	4.20	4.30	m
150cm**	2.60	2.70	2.70	2.70	2.70	2.80	2.80	2.90	2.90	"

B (Autres Tissus) / B (Otras Telas)										
115cm***	3.10	3.10	3.10	3.10	3.20	3.40	3.50	3.50	3.60	m
150cm***	2.60	2.60	2.60	2.70	2.70	2.80	2.80	2.80	2.90	"

Entoilage à Coudre A,B / Entretela para Coser A,B - 46, 51cm - 0.5m de léger / ligera

Doublure A,B / Forro A,B										
115cm	0.70	0.70	0.70	0.70	0.80	0.80	0.80	0.80	1.00	m

*without nap **with nap ***with or without nap *sans sens **avec sens ***avec ou sans sens
*sin pelusa **con pelusa ***sin o con pelusa



A



B

Instrucciones de costura en Español en el Interior del Patrón.