

S9292 10 PIECES/PIEZAS

MISSES' DRESSES WITH MANDARIN COLLAR AND SKIRT OPTIONS

Fabrics: Cotton Blends, Sateen, Taffeta, Crepe, Shantung. Extra fabric needed to match plaids, stripes or one-way design fabrics.

Notions: Thread, one 14" (35cm) zipper, one hook and eye, 1 yd. (1.0m) of piping, two pairs of frogs.

Sizes	6	8	10	12	14	16	18	20	22	
European	32	34	36	38	40	42	44	46	48	
A										
45"***	2½	2½	2½	3	3	3	3½	3½	3½	Yd.
60"***	2⅞	2⅞	2⅞	2⅞	2⅞	2⅞	2⅞	2⅞	2⅞	"
B										
45"***	2	2	2	2	2⅜	2⅜	2⅞	2⅞	2⅞	Yd.
60"***	1½	1½	1½	2	2	2	2	2	2	"

Fusible Interfacing A,B - 18, 20" - ⅞ yd. of lightweight

FINISHED GARMENT MEASUREMENTS

A Width	72	73	74	75½	77½	79½	81½	83½	85½	In.
Finished back length from base of neck:										
A	38½	38¾	39	39¼	39½	39¾	40	40¼	40½	In.
B	41½	41¾	42	42¼	42½	42¾	43	43¼	43½	"

JEUNES FEMMES: ROBES À COL MAO ET CHOIX DE JUPE

SEÑORITAS: VESTIDOS CON CUELLO MANDARIN Y OPCIONES DE FALDA

Tailles/ Tallas	6	8	10	12	14	16	18	20	22	
Françaises	34	36	38	40	42	44	46	48	50	
Europeas	32	34	36	38	40	42	44	46	48	
A										
115cm***	2.30	2.30	2.30	2.80	2.80	2.80	2.90	2.90	2.90	m
150cm***	2.00	2.00	2.00	2.00	2.00	2.40	2.40	2.40	2.40	"
B										
115cm***	1.90	1.90	1.90	1.90	2.20	2.20	2.70	2.70	2.70	m
150cm***	1.40	1.40	1.40	1.90	1.90	1.90	1.90	1.90	1.90	"

Entoilage Thermocollant A,B - 46, 51cm - 0.80m de léger

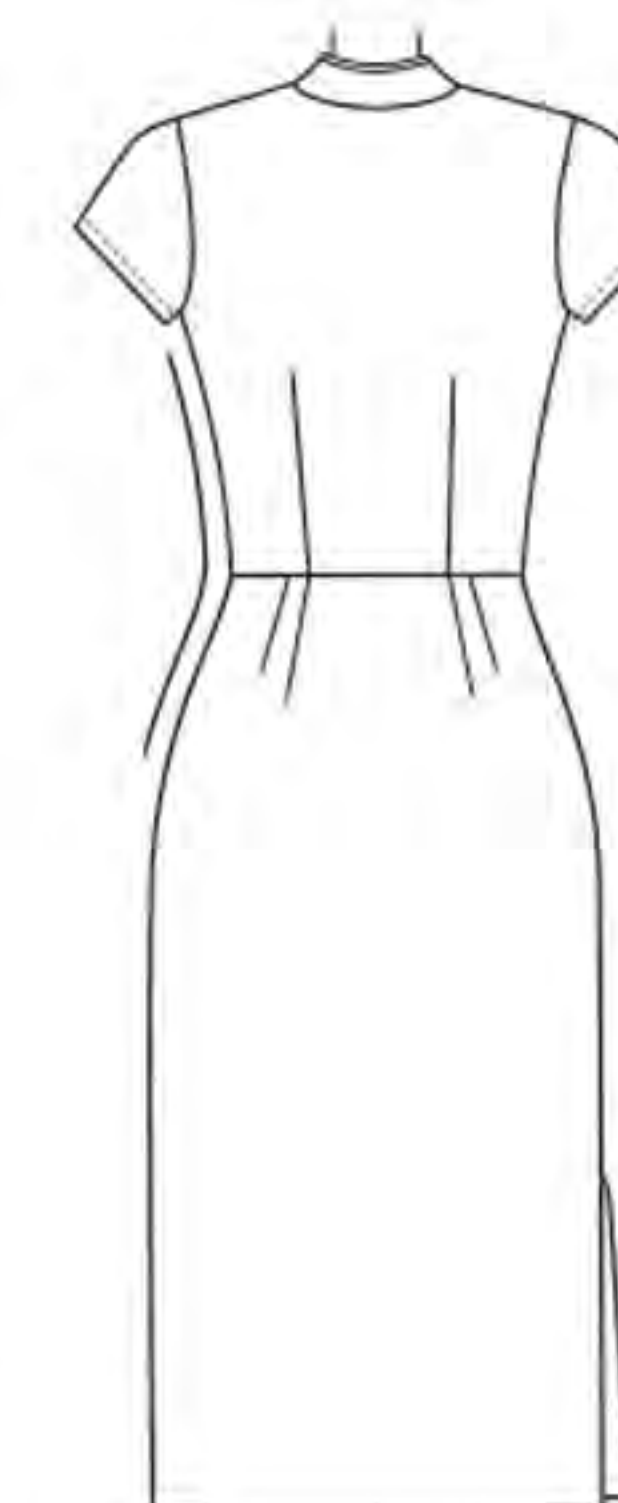
Entretela Termoadhesiva A,B - 46, 51cm - 0.80m de ligero

*without nap **with nap ***with or without nap *sans sens **avec sens ***avec ou sans sens
*sin pelusa **con pelusa ***sin o con pelusa

Instrucciones de costura en Español en el Interior del Patrón.



A



B