

S9288 6 PIECES/PIEZAS

MISSES' WRAP TOP AND FLARED SKIRT

Fabrics: A,B: Jerseys. C: Broadcloth, Satin, Taffeta. Extra fabric needed to match plaids, stripes or one-way design fabrics.

Notions: Thread. C: 7" (18cm) invisible zipper, hook and eye closure.

Sizes	6	8	10	12	14	16	18	20	22
European	32	34	36	38	40	42	44	46	48

A										
60"***	2¼	2¼	2¼	2¾	2¾	2½	2½	2½	2½	Yd.

B										
60"***	2⅝	2⅝	2⅝	2⅝	2⅝	2⅝	2⅝	3¼	3¼	Yd.

C										
45"****	3¾	3¾	3¾	3⅞	3⅞	4	4	4⅛	4⅛	Yd.
60"****	2⅝	2⅝	2⅝	2¾	2¾	2⅞	2⅞	3	3⅛	"

Fusible Interfacing- 18, 20" lightweight										
	1	1	1	1	1½	1½	1¼	1¼	1½	Yd.

FINISHED GARMENT MEASUREMENTS

A,B Width	23½	24½	25½	27	29	31	33	35	37	In.
C Length	24	24	24	24	24	24	24	24	24	"

Finished back length from base of neck:

A,B	15½	15¾	16	16¼	16½	16¾	17	17¼	17½	In.
------------	-----	-----	----	-----	-----	-----	----	-----	-----	-----

JEUNES FEMMES: HAUT PORTEFEUILLE ET JUPE ÉVASÉE

SEÑORITAS: TOP ENVOLVENTE Y FALDA ACAMPANADA

Tailles/ Tallas	6	8	10	12	14	16	18	20	22
Françaises	34	36	38	40	42	44	46	48	50
Europeas	32	34	36	38	40	42	44	46	48

A										
150cm**	2.10	2.10	2.10	2.20	2.20	2.30	2.30	2.30	2.40	m

B										
150cm**	2.40	2.40	2.40	2.40	2.40	2.40	2.40	3.00	3.00	m

C										
115cm***	3.50	3.50	3.50	3.60	3.60	3.70	3.70	3.80	3.80	m
150cm***	2.40	2.40	2.40	2.60	2.60	2.70	2.70	2.80	2.90	"

Entoilage Thermocollant- 46cm à 51cm, léger

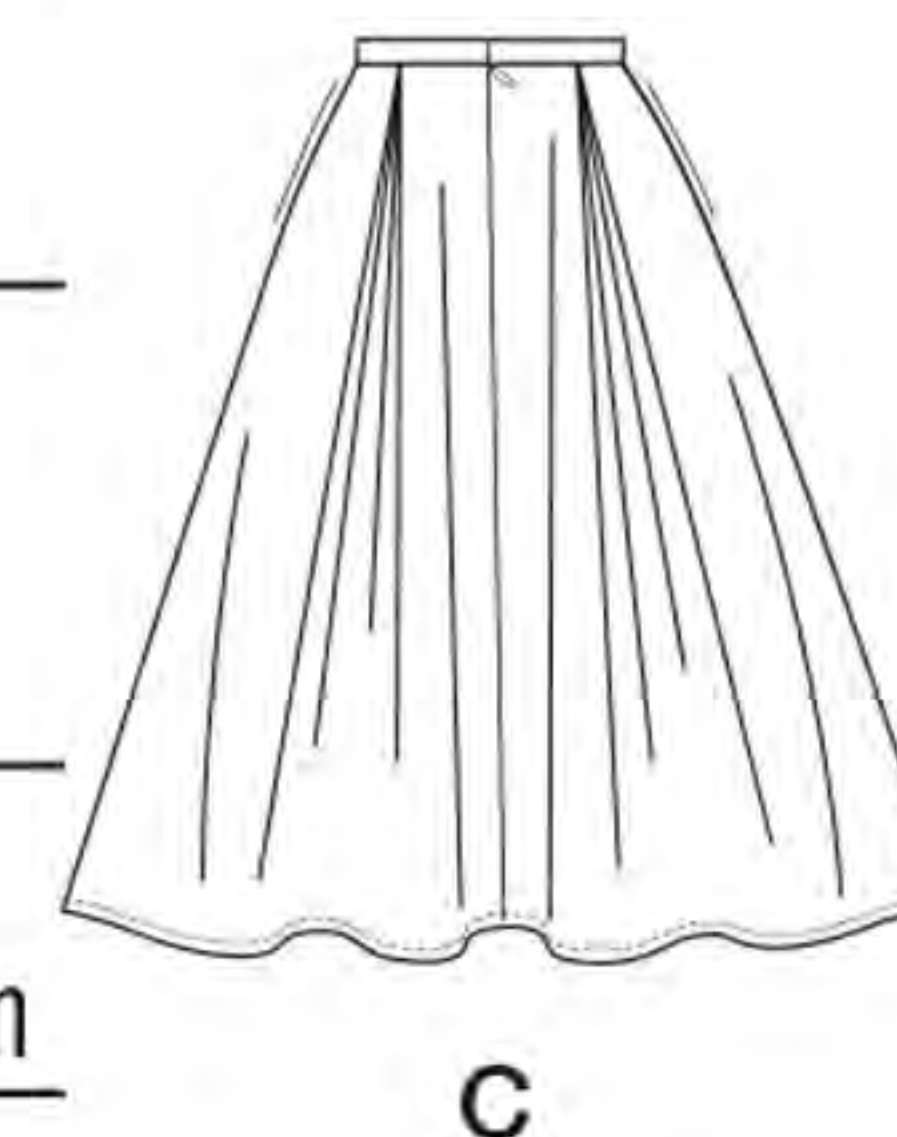
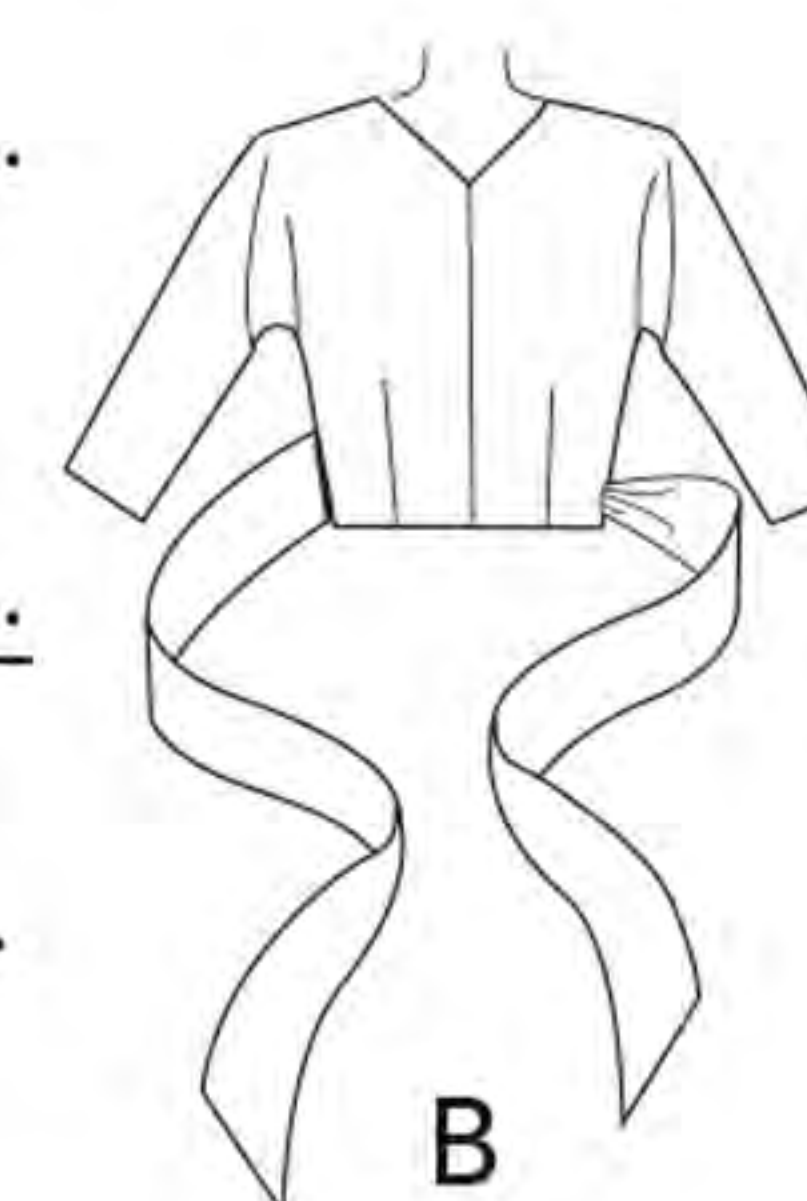
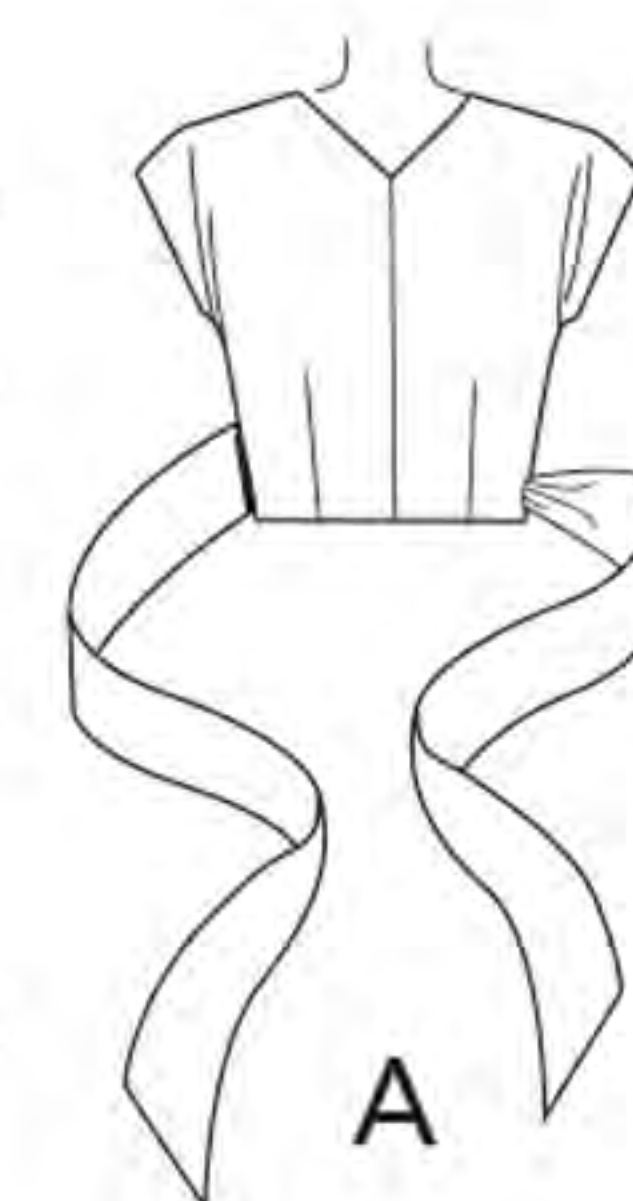
Entretela Termoadhesiva- 46cm a 51cm, ligera

	1.00	1.00	1.00	1.00	1.10	1.10	1.20	1.20	1.30	m
--	------	------	------	------	------	------	------	------	------	---

*without nap **with nap ***with or without nap

*sans sens **avec sens ***avec ou sans sens

*sin pelusa **con pelusa ***sin o con pelusa



Instrucciones de costura en Español en el Interior del Patrón.