

S9287 10 PIECES/PIEZAS

MISSES' SWEETHEART-NECKLINE BLOUSES

Fabrics: Dotted Swiss, Voile, Satin, Broadcloth, Eyelet. Extra fabric needed to match plaids, stripes or one-way design fabrics.

Notions: Thread, seven $\frac{5}{8}$ " (1.5cm) buttons.

Sizes	4	6	8	10	12	14	16	18	20
European	30	32	34	36	38	40	42	44	46

A										
45"***	$1\frac{7}{8}$	$1\frac{7}{8}$	$1\frac{7}{8}$	2	2	2	2	2	$2\frac{1}{2}$	Yd.
60"***	$1\frac{3}{8}$	$1\frac{3}{8}$	$1\frac{3}{8}$	$1\frac{3}{8}$	$1\frac{3}{8}$	$1\frac{5}{8}$	$1\frac{5}{8}$	$1\frac{3}{4}$	$1\frac{3}{4}$	"

B										
45"***	$1\frac{1}{2}$	$1\frac{5}{8}$	$1\frac{5}{8}$	$1\frac{5}{8}$	$1\frac{5}{8}$	$1\frac{5}{8}$	$1\frac{5}{8}$	2	2	Yd.
60"***	$1\frac{1}{4}$	$1\frac{1}{4}$	$1\frac{1}{4}$	$1\frac{1}{4}$	$1\frac{1}{4}$	$1\frac{3}{8}$	$1\frac{5}{8}$	$1\frac{3}{4}$	$1\frac{3}{4}$	"

Contrast B										
45, 60"***	$\frac{3}{8}$	$\frac{3}{8}$	$\frac{1}{2}$	$\frac{1}{2}$	$\frac{1}{2}$	$\frac{1}{2}$	$\frac{1}{2}$	$\frac{1}{2}$	$\frac{1}{2}$	Yd.

C										
45"***	$1\frac{5}{8}$	$1\frac{5}{8}$	$1\frac{5}{8}$	$1\frac{5}{8}$	$1\frac{3}{4}$	$1\frac{3}{4}$	$1\frac{3}{4}$	$1\frac{7}{8}$	$1\frac{7}{8}$	Yd.
60"***	$1\frac{1}{8}$	$1\frac{1}{4}$	$1\frac{1}{4}$	$1\frac{1}{4}$	$1\frac{1}{4}$	$1\frac{1}{4}$	$1\frac{3}{8}$	$1\frac{3}{8}$	$1\frac{1}{2}$	"

Fusible Interfacing A,B,C - 18, 20" lightweight fusible										
	$\frac{7}{8}$	$\frac{7}{8}$	$\frac{7}{8}$	$\frac{7}{8}$	$\frac{7}{8}$	1	1	1	1	Yd.

FINISHED GARMENT MEASUREMENTS

A,B,C Width 39 40 41 42 43½ 45½ 47½ 49½ 51½ In.

Finished back length from base of neck:

A,B,C 23¼ 23½ 23¾ 24 24¼ 24½ 24¾ 25 25¼ In.

JEUNES FEMMES: CHEMISIERS À DÉCOLLETÉ EN COEUR

SEÑORITAS: BLUSAS CON ESCOTE CORAZÓN

Tailles/ Tallas	4	6	8	10	12	14	16	18	20
Françaises	32	34	36	38	40	42	44	46	48
Europeas	30	32	34	36	38	40	42	44	46

A										
115cm***	1.80	1.80	1.80	1.90	1.90	1.90	1.90	1.90	2.00	m
150cm***	1.30	1.30	1.30	1.30	1.30	1.50	1.50	1.60	1.60	"

B										
115cm***	1.40	1.50	1.50	1.50	1.50	1.50	1.50	1.90	1.90	m
150cm***	1.20	1.20	1.20	1.20	1.20	1.30	1.50	1.60	1.60	"

B Contraste										
115, 150cm***	0.40	0.40	0.50	0.50	0.50	0.50	0.50	0.50	0.50	m

C										
115cm***	1.50	1.50	1.50	1.50	1.60	1.60	1.60	1.80	1.80	m
150cm***	1.10	1.20	1.20	1.20	1.20	1.20	1.30	1.30	1.40	"

Entoilage Thermocollant A,B,C- 46cm à 51cm, léger

Entretela Termoadhesiva A,B,C- 46cm a 51cm, ligera

	0.80	0.80	0.80	0.80	0.80	1.00	1.00	1.00	1.00	m
--	------	------	------	------	------	------	------	------	------	---

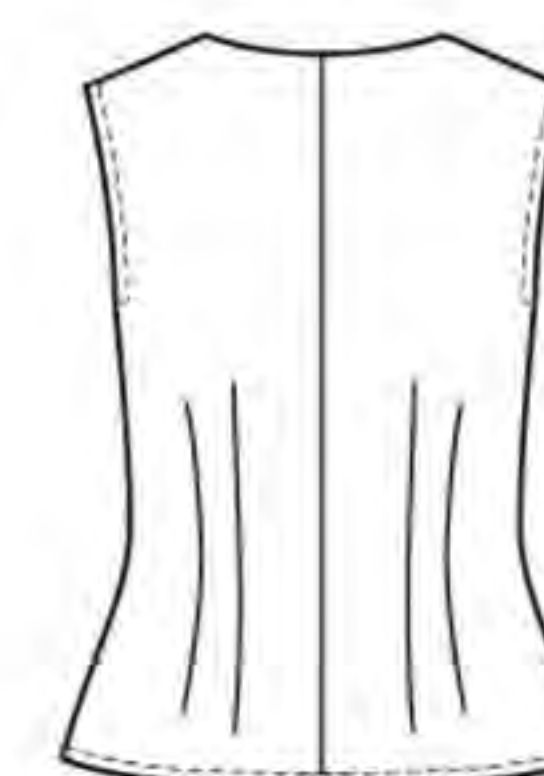
*without nap **with nap ***with or without nap *sans sens **avec sens ***avec ou sans sens
*sin pelusa **con pelusa ***sin o con pelusa



A



B



C

Instrucciones de costura en Español en el Interior del Patrón.