

S9286 11 PIECES/PIEZAS

MISSES' FOLD-BACK FACING DRESSES

Fabrics: Pinwale Corduroy, Velveteen, Tweed, Broadcloth, Shantung. **Lining 1A,B:** Lining Fabric. **Lining 2A:** Organdy. Extra fabric needed to match plaids, stripes or one-way design fabrics.

Notions: Thread, one 14"/16" (35cm/40cm) invisible zipper and two 7/8" (2.2cm) button-to-cover kits.

Sizes	6	8	10	12	14	16	18	20	22
European	32	34	36	38	40	42	44	46	48

A										
45"***	3 3/8	3 3/8	3 3/8	3 1/2	3 1/2	3 5/8	3 5/8	3 3/4	3 3/4	Yd.
60"***	2 5/8	2 5/8	2 5/8	2 5/8	2 3/4	2 3/4	2 7/8	3	3	"

Lining 2A (Petticoat)

45, 60"	7 3/4	7 7/8	7 7/8	7 7/8	8	8 1/8	8 1/4	8 1/4	8 3/8	Yd.
---------	-------	-------	-------	-------	---	-------	-------	-------	-------	-----

B										
45"***	1 3/8	1 3/8	1 3/8	1 7/8	2 1/8	2 1/8	2 1/8	2 1/4	2 1/4	Yd.
60"***	1 3/8	1 3/8	1 3/8	1 3/8	1 3/8	1 3/8	1 3/8	1 3/8	1 3/8	"

Contrast A,B

45"***	5/8	5/8	3/4	3/4	3/4	3/4	3/4	3/4	3/4	Yd.
60"***	3/8	3/8	3/8	3/8	1/2	1/2	1/2	1/2	1/2	"

Lining 1A,B

45"	5/8	5/8	5/8	3/4	3/4	7/8	1	1	1	Yd.
-----	-----	-----	-----	-----	-----	-----	---	---	---	-----

FINISHED GARMENT MEASUREMENTS

B Width	36	37	38	39 1/2	41 1/2	43 1/2	45 1/2	47 1/2	49 1/2	In.
----------------	----	----	----	--------	--------	--------	--------	--------	--------	-----

Finished back length from base of neck:

A,B	40 1/2	40 3/4	41	41 1/4	41 1/2	41 3/4	42	42 1/4	42 1/2	In.
------------	--------	--------	----	--------	--------	--------	----	--------	--------	-----

JEUNES FEMMES: ROBES À PAREMENTURE À REPLIER

SEÑORITAS: VESTIDOS CON VISTA PARA DOBLAR

Tailles/ Tallas	6	8	10	12	14	16	18	20	22
Françaises	34	36	38	40	42	44	46	48	50
Europeas	32	34	36	38	40	42	44	46	48

A										
115cm***	3.10	3.10	3.10	3.20	3.20	3.40	3.40	3.50	3.50	m
150cm***	2.40	2.40	2.40	2.40	2.60	2.60	2.70	2.80	2.80	"

Doublure 2A (Jupon)

115, 150cm**	7.10	7.20	7.20	7.20	7.40	7.50	7.60	7.60	7.70	m
--------------	------	------	------	------	------	------	------	------	------	---

B										
115cm***	1.30	1.30	1.30	1.80	2.00	2.00	2.00	2.10	2.10	m
150cm***	1.30	1.30	1.30	1.30	1.30	1.30	1.30	1.30	1.30	"

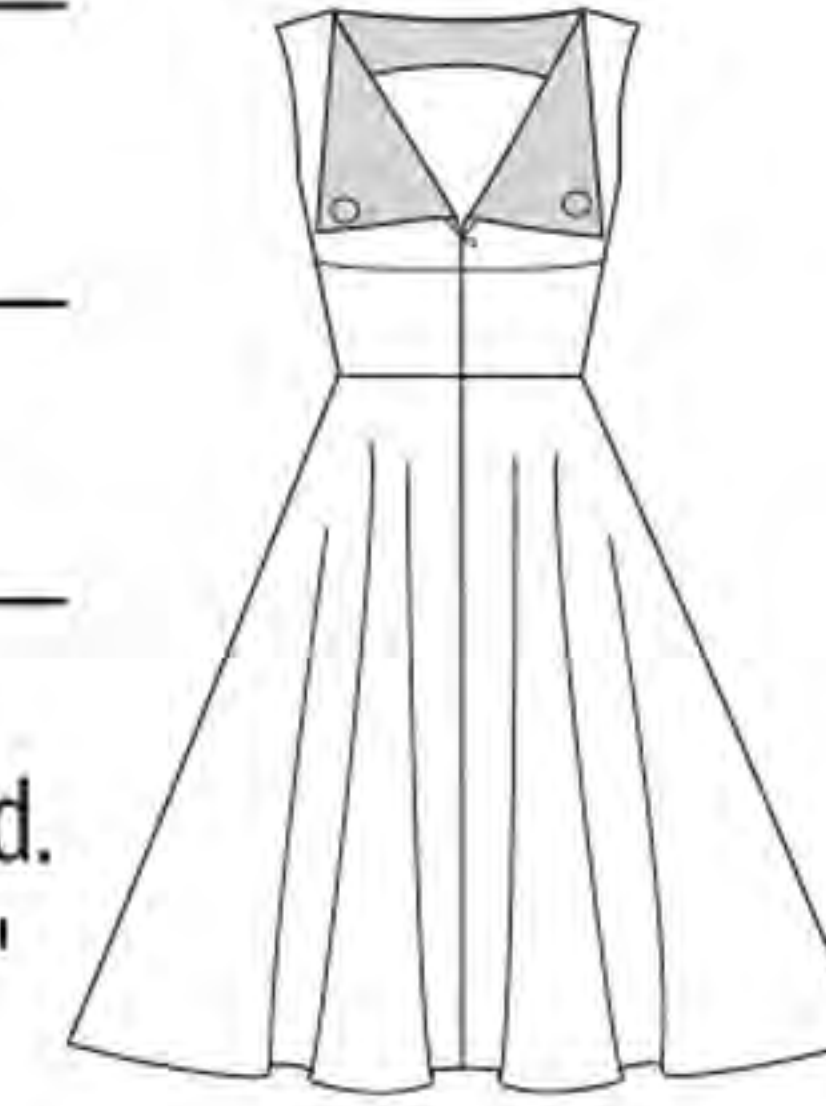
Contraste A,B

115cm***	0.60	0.60	0.70	0.70	0.70	0.70	0.70	0.70	0.70	m
150cm***	0.40	0.40	0.40	0.40	0.50	0.50	0.50	0.50	0.50	"

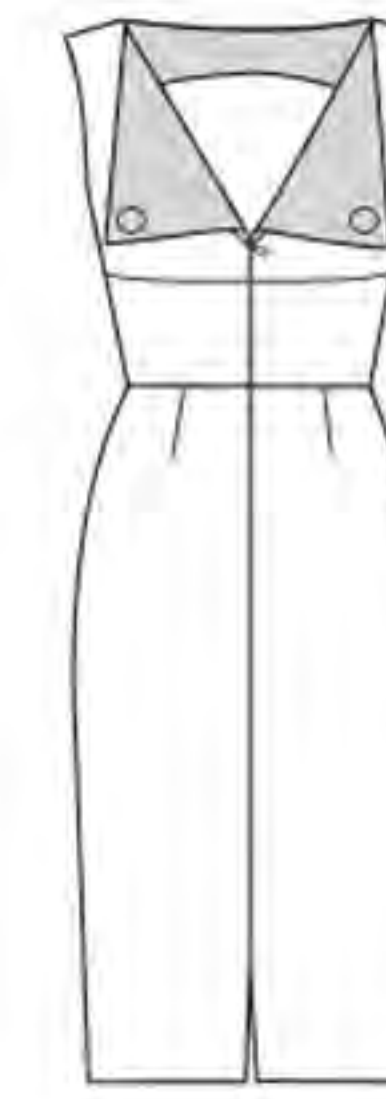
Doublure 1A,B / Forro 1A,B

115cm	0.60	0.60	0.60	0.70	0.70	0.80	1.00	1.00	1.00	m
-------	------	------	------	------	------	------	------	------	------	---

*without nap **with nap ***with or without nap *sans sens **avec sens ***avec ou sans sens
*sin pelusa **con pelusa ***sin o con pelusa



A



B

Instrucciones de costura en Español en el Interior del Patrón.