

# S9282

11 PIECES/PIEZAS

## BABIES' KNIT DRESS, ROMPER AND DIAPER COVER

**Fabrics:** All Views sized for stretch knit fabrics only such as Bamboo, Cotton Knit, Interlock, ITY, Modal, Stretch Terry, Stretch Velour. See Pick-A-Knit® Rule. Suitable for Overlock/Serger. Extra fabric needed to match plaids, stripes or one-way design fabrics.

**Notions:** Thread, **A,B:** One pkg. of ½" (1.3cm) wide single fold bias tape. **B:** ¾ yd. (0.60m) of ⅝" (1.5cm) wide snap tape. **C:** ¼ yd. (0.20m) of ⅝" (1.5cm) wide hook and loop tape, 1⅞ yds. (1.10m) of ¼" (6mm) wide elastic.

Sizes	XS	S	M	L	XL	
<b>Age</b>	0-3	6	9	12	18-24	mos.
<b>A Dress</b>						
45"***	¾	¾	⅞	⅞	1	Yd.
60"***	⅝	⅝	¾	¾	¾	"
<b>B Romper</b>						
45"***	1	1	1⅞	1¼	1¼	Yds.
60"***	¾	⅞	⅞	1	1⅞	"
<b>C Diaper Cover</b>						
45"***	⅝	⅝	¾	⅞	⅞	Yd.
60"***	⅝	⅝	⅝	¾	¾	"

### FINISHED GARMENT MEASUREMENTS

Finished back length from base of neck:

<b>A Dress</b>	16	18	20	22	24	Ins.
<b>B Romper</b>	19½	21½	23½	25½	27½	"
<b>A Dress Width</b>	33	34	35	36	37	"
<b>B Romper Side Length</b>	7½	8	8½	9	9½	Ins.

**BÉBÉS: ROBE, BARBOTEUSE ET CACHE-COUCHE EN TRICOT**

**BEBÉS: VESTIDO, MAMELUCO Y CALZÓN CUBRE-PAÑAL EN TEJIDO DE PUNTO**

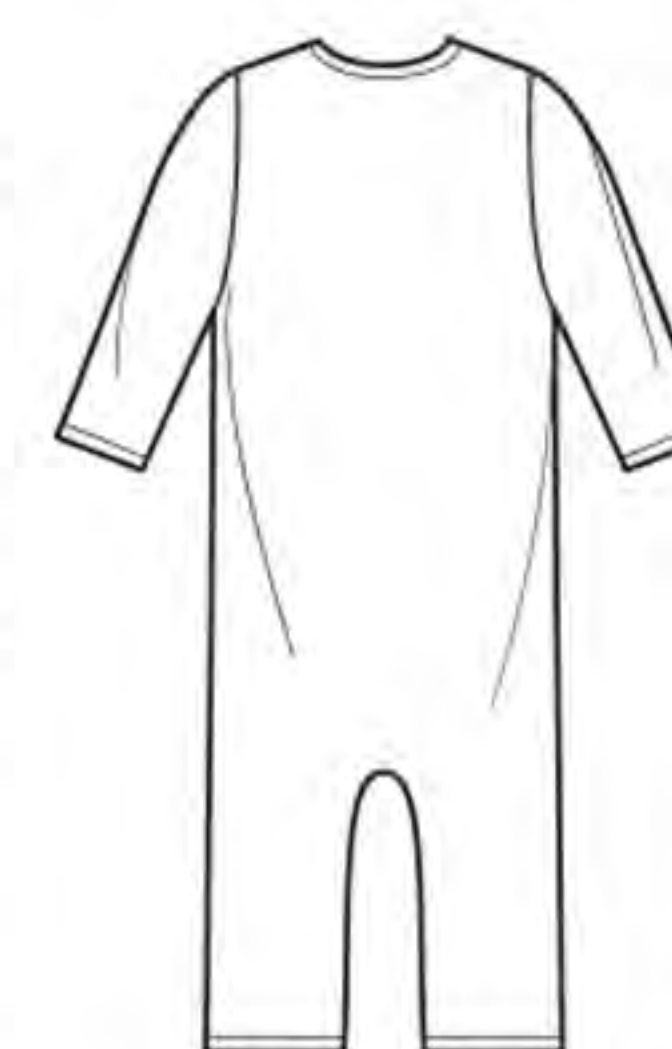
Tailles/ Tallas	TP/XP	P	M	G	TG/XG	
<b>Âge/ Edad</b>	0-3	6	9	12	18-24	mois/meses
<b>A Robe / A Vestido</b>						
115cm**	0.70	0.70	0.80	0.80	1.00	m
150cm**	0.60	0.60	0.70	0.70	0.70	"
<b>B Barboteuse / B Mameluco</b>						
115cm**	1.00	1.00	1.10	1.20	1.20	m
150cm**	0.70	0.80	0.80	1.00	1.10	"
<b>C Cache-Couche / Calzón Cubre-Pañal</b>						
115cm**	0.60	0.60	0.70	0.70	0.80	m
150cm**	0.60	0.60	0.60	0.60	0.70	"

\*without nap \*\*with nap \*\*\*with or without nap  
\*sin pelusa \*\*con pelusa \*\*\*con o sin pelusa

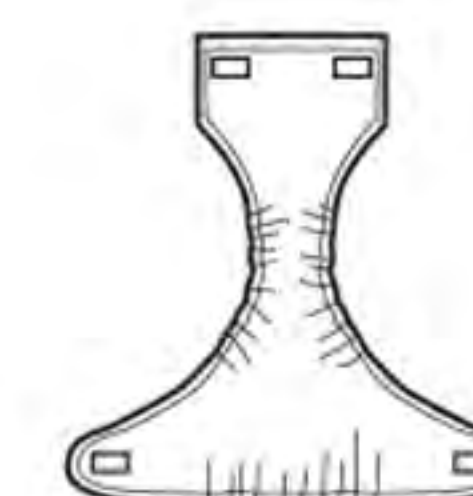
\*sans sens \*\*avec sens \*\*\*avec ou sans sens



**A**



**B**



**C**

**Instrucciones de costura en Español en el Interior del Patrón.**