

S9252 15 PIECES

UNISEX COSTUMES

Fabrics: **A:** Gabardine, Suitings, Twill, Velvet, Wool Types. **A,B** also in Brocade, Damask, Satin. **B,C:** Cotton Types, Linen Types, Twill. **Lining:** Lining Fabric.
Interfacing: Lightweight Fusible. Extra fabric needed to match plaids, stripes or one-way design fabrics.

Notions: Thread. **A:** Thirty six $\frac{7}{8}$ " (2.2cm) buttons. **B:** Ten $\frac{3}{4}$ " (2cm) buttons.
C: $1\frac{3}{8}$ yds. (1.3m) of $\frac{3}{4}$ " (2cm) wide elastic, $1\frac{1}{2}$ yds. (1.4m) of 1" (2.5cm) wide elastic.

Sizes	34	36	38	40	42	44	46	48	50	52
European	44	46	48	50	52	54	56	58	60	62

A Coat

45"***	2½	2½	2½	3⅞	3¼	3¼	3¼	3¼	3¼	3¾	Yds.
60"***	2	2	2	2⅞	2⅞	2⅞	2½	2½	2⅝	2⅝	"

Contrast

45"***	1⅞	1⅞	1⅞	1⅞	1⅞	1⅞	1⅞	1⅞	1¼	1¼	Yds.
60"***	1	1	1	1	1	1	1	1	1	1	"

Lining

45"*	2¼	2½	2⅞	2⅞	2⅞	3⅞	3⅞	3⅞	3¼	3¼	Yds.
------	----	----	----	----	----	----	----	----	----	----	------

Interfacing - $1\frac{3}{4}$ yds. of 20" to 25" lightweight fusible

B Vest

45"***	1½	1½	1¾	1¾	1¾	1¾	1⅞	1⅞	1⅞	1⅞	Yds.
60"***	1	1	1	1	1	1	1	1⅞	1½	1½	"

Lining

45"*	1	1¼	1½	1½	1½	1½	1¾	1⅞	1⅞	1⅞	Yds.
------	---	----	----	----	----	----	----	----	----	----	------

Interfacing - $1\frac{7}{8}$ yds. of 20" to 25" lightweight fusible

C Pants

45"***	1¾	2	2	2	2	2	2	2	2	2⅞	Yds.
60"***	1	1⅞	1⅞	1½	1⅝	1⅝	1⅝	1⅞	2	2⅞	"

FINISHED GARMENT MEASUREMENTS

A,B Chest 36½ 38½ 40½ 42½ 44½ 46½ 48½ 50½ 52½ 54½ Ins.

C Hip 39 41 43 45 47 49 51 53 55 57 "

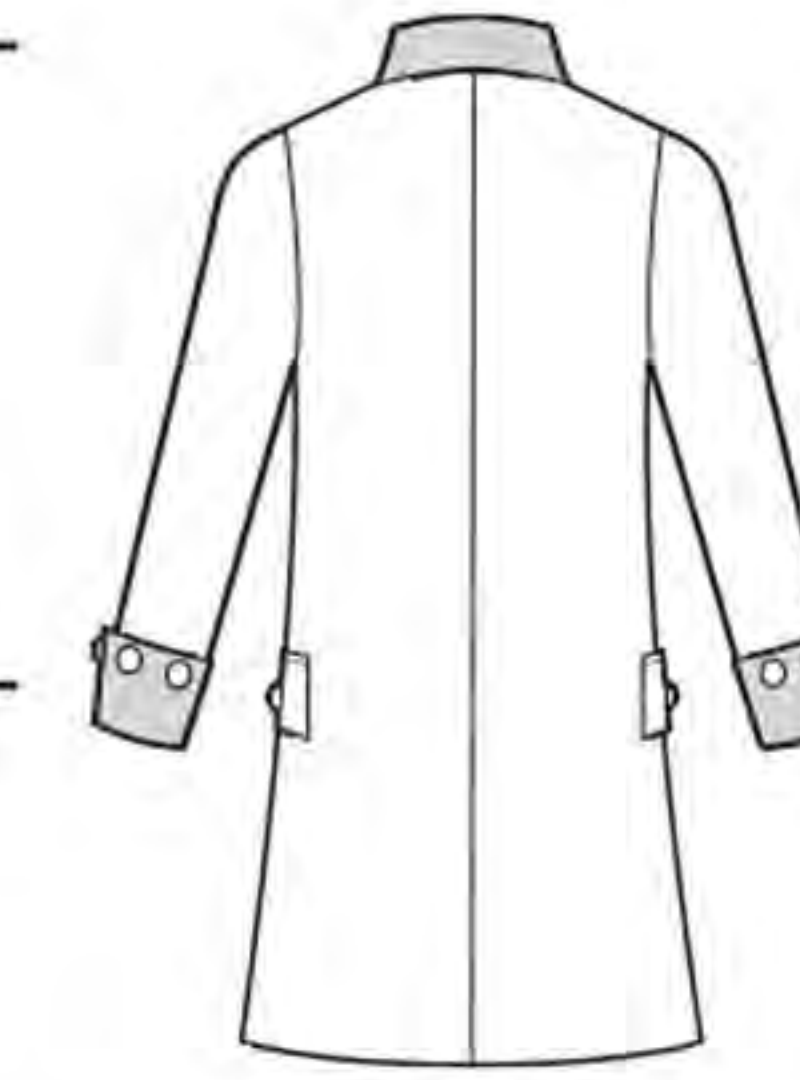
Finished back length from base of neck:

A Coat 39¼ 39½ 39¾ 40 40¼ 40½ 40¾ 41 41¼ 41½ Ins.

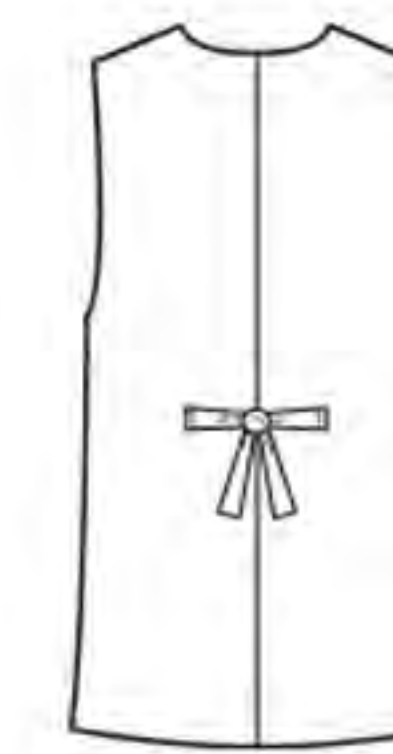
B Vest 28¼ 28½ 28¾ 29 29¼ 29½ 29¾ 30 30¼ 30½ "

C Pants Side length

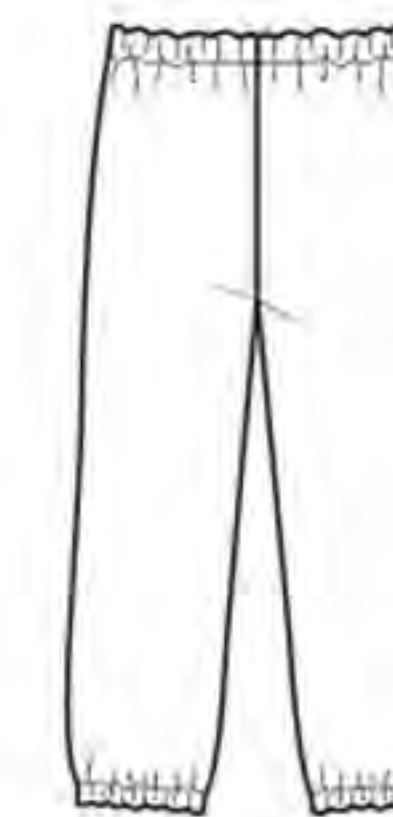
27¾ 28 28¼ 28½ 28¾ 29 29¼ 29½ 29¾ 30 Ins.



A



B



C

*without nap **with nap ***with or without nap