

S9207

14 PIECES/PIEZAS

MISSES' AND MEN'S NIGHTSHIRT, PAJAMA TOPS AND PANTS

Fabrics: A,B,C,E in Cotton Blends, Cotton Flannel, Poplin, Seersucker, Shirtings. **D Top** sized for stretch knits only such as Cotton Knits, Fleece, Sweatshirt Fleece. See Pick-A-Knit® Rule. Suitable for Overlock/Serger. Extra fabric needed to match plaids, stripes or one-way design fabrics.

Notions: Thread. **A,B:** Four ¾" (2.0cm) buttons. **C:** Six ¾" (2.0cm) buttons. **E:** 1½ yds. (1.4m) of ½" (1.3cm) wide elastic.

Sizes		XS	S	M	L	XL	
		30-32	34-36	38-40	42-44	46-48	In
A Top	45"***	2¼	2¼	2½	2½	2¾	Yd
	60"***	1⅞	1⅞	2	2¼	2¾	"
A,B Interfacing- 1½ yds. of 20" to 25" lightweight fusible							
B Top	45"***	2⅝	2¾	3	3	3¼	Yd
	60"***	2¼	2¾	2¾	2¾	2¾	"
C Nightshirt	45"***	3⅞	3½	3¾	3⅞	4	Yd
	60"***	3	3⅞	3¼	3½	3⅝	"
Interfacing- 1½ yds. of 20" to 25" lightweight fusible							
D Top	60"*	1¾	1¾	1⅞	1⅞	1⅞	Yd
E Pants	45"***	2¼	2⅝	2⅝	2¾	2¾	Yd
	60"***	1⅞	1⅞	2¾	2¾	2½	"

FINISHED GARMENT MEASUREMENTS

A,B Top and C Nightshirt	41½	44	48	52	56	In
D Top	36½	39	43	47	51	"
E Pants Hip	36	38½	42	46	50	"
Finished back length from base of neck:						
A,B Top Length	29	29½	30	30½	31	In
C Nightshirt	43	43½	44	44½	45	"
D Top Length	27½	28	28½	29	29½	"
E Pants Side Length	41½	42	42½	43	43½	"
A,B Top Width	42	44½	48½	52½	56½	"
C Nightshirt Width	43½	46	50	54	58	"
D Top Width	39	41½	45½	49½	53½	"
E Pants Leg Width	18½	19	19½	20	20½	"

JEUNE FEMME ET HOMMES: CHEMISE DE NUIT, HAUTS ET PANTALON PYJAMA

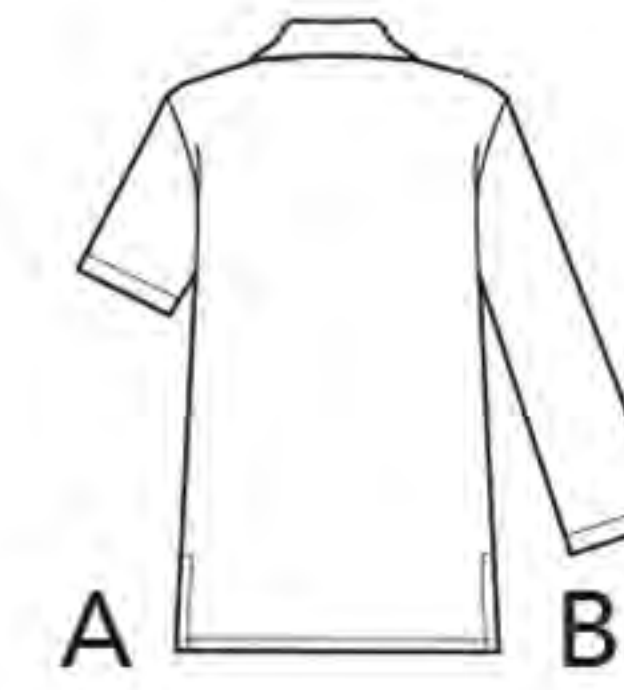
SEÑORITAS ET HOMBRES: CAMISA DE DORMIR, TOPS Y PANTALÓN DE PAJAMA

Tailles/ Tallas		TP/XP	P	M	G	TG/XG	
		76-81	87-92	97-102	107-112	117-122	cm
A Haut/ A Top	115cm***	2.00	2.10	2.30	2.30	2.50	m
	150cm***	1.70	1.70	1.80	2.10	2.20	"
A,B Entoilage- 1.00m de 51cm à 64cm, léger, thermocollant							
A,B Entretela- 1.00m de 51cm a 64cm, ligera, termoadhesiva							
B Haut/ B Top	115cm***	2.40	2.50	2.70	2.80	2.90	m
	150cm***	2.10	2.10	2.20	2.50	2.60	"
C Liquette/ C Camisa de Dormir							
	115cm***	3.10	3.20	3.50	3.50	3.60	m
	150cm***	2.80	2.80	2.90	3.20	3.30	"
Entoilage- 1.40m de 51cm à 64cm, léger, thermocollant							
Entretela- 1.40m de 51cm a 64cm, ligera, termoadhesiva							
D Haut/ D Top	150cm*	1.60	1.60	1.70	1.70	1.80	m
E Pantalon/ E Pantalón							
	115cm***	2.10	2.40	2.40	2.50	2.50	m
	150cm***	1.30	1.30	2.10	2.10	2.20	"

*without nap **with nap ***with or without nap

*sans sens **avec sens ***avec ou sans sens

*sin pelusa **con pelusa ***con o sin pelusa



Instrucciones de costura en Español en el Interior del Patrón.