

S9206

17 PIECES/PIEZAS

MEN'S ROBE, BELT, TOP, AND PANTS

Fabrics: Cotton Blends, Cotton Flannel, Cotton Knit, Poplin. **Robe** also in Fleece, Terry Cloth. Extra fabric needed to match plaids, stripes or one-way design fabrics.

Notions: Thread. **A,B:** Five $\frac{5}{8}$ " (1.50cm) buttons; **C,D:** 3 yds. (3.00m) of $\frac{3}{8}$ " (1.00cm) wide elastic.

Sizes		XS	S	M	L	XL	
		30-32	34-36	38-40	42-44	46-48	
A Top	45 ^{***}	2 $\frac{1}{4}$	2 $\frac{3}{8}$	2 $\frac{3}{8}$	2 $\frac{5}{8}$	2 $\frac{3}{4}$	Yd
	60 ^{***}	1 $\frac{3}{8}$	1 $\frac{3}{4}$	1 $\frac{3}{4}$	2 $\frac{1}{8}$	2 $\frac{1}{4}$	"
A,B Interfacing- 1 $\frac{1}{8}$ yds. of 20" to 25" lightweight fusible							
B Top	45 ^{***}	2 $\frac{3}{4}$	2 $\frac{3}{4}$	2 $\frac{7}{8}$	3 $\frac{3}{8}$	3 $\frac{1}{2}$	Yd
	60 ^{***}	2	2	2 $\frac{1}{8}$	2 $\frac{5}{8}$	2 $\frac{5}{8}$	"
C Pants	45 ^{***}	2 $\frac{5}{8}$	2 $\frac{3}{4}$	2 $\frac{3}{4}$	2 $\frac{3}{4}$	3 $\frac{1}{8}$	Yd
	60 ^{***}	2 $\frac{1}{8}$	2 $\frac{3}{8}$	2 $\frac{3}{8}$	2 $\frac{5}{8}$	2 $\frac{3}{4}$	"
D Short	45 ^{***}	1 $\frac{3}{8}$	1 $\frac{3}{8}$	1 $\frac{1}{2}$	1 $\frac{3}{4}$	1 $\frac{3}{4}$	Yd
	60 ^{***}	1 $\frac{1}{4}$	1 $\frac{3}{8}$	1 $\frac{3}{8}$	1 $\frac{3}{8}$	1 $\frac{1}{2}$	"
E Robe	45 ^{***}	4 $\frac{1}{8}$	4 $\frac{1}{4}$	5 $\frac{1}{8}$	5 $\frac{3}{8}$	5 $\frac{1}{2}$	Yd
	60 ^{***}	3 $\frac{1}{2}$	3 $\frac{7}{8}$	4	4 $\frac{1}{8}$	4 $\frac{1}{4}$	"

Interfacing- 2 $\frac{3}{8}$ yds. of 20" to 25" lightweight fusible

FINISHED GARMENT MEASUREMENTS

A,B Shirt Chest	42	46	50	54	58	In
E Robe Chest	41	45	49	53	57	"
C Pants or D Shorts Hip	39 $\frac{1}{2}$	43 $\frac{1}{2}$	47 $\frac{1}{2}$	51 $\frac{1}{2}$	55 $\frac{1}{2}$	"
Finished back length from base of neck:						
A,B Shirt	30	30 $\frac{1}{2}$	31	31 $\frac{1}{2}$	32	In
E Robe	51	51 $\frac{1}{2}$	52	52 $\frac{1}{2}$	53	"
C Pants Side Length	17	17 $\frac{1}{2}$	18	18 $\frac{1}{2}$	19	"
D Short Side Length	18	18 $\frac{1}{2}$	19	19 $\frac{1}{2}$	20	"
A,B Shirt Width	42	46	50	54	58	"
C Pants Leg Width	17	17 $\frac{1}{2}$	18	18 $\frac{1}{2}$	19	"
D Shorts Leg Width	26	26 $\frac{1}{2}$	27	27 $\frac{1}{2}$	28	"
E Robe Width	47	51	55	59	63	"

HOMMES: PEIGNOIR, CEINTURE, HAUT ET PANTALON

HOMBRES: BATA, CINTURÓN, TOP Y PANTALÓN

Tailles/ Tallas	TP/XP	P	M	G	TG/XG	
Françaises/ Eur	40-42	44-46	48-50	52-54	56-58	
A Haut/ A Top	115cm ^{**}	2.10	2.10	2.20	2.40	2.50 m
	150cm ^{**}	1.30	1.60	1.60	1.90	2.10 "

A,B Entoilage- 1.00m de 51cm à 64cm, léger, thermocollant

A,B Entretela- 1.00m de de 51cm a 64cm, ligera, termoadhesiva

B Haut/ B Top	115cm ^{**}	2.50	2.50	2.60	3.10	3.20 m
	150cm ^{**}	1.80	1.90	1.90	2.40	2.40 "

C Pantalon/ C Pantalón

	115cm ^{**}	2.40	2.50	2.50	2.50	2.80 m
	150cm ^{**}	2.00	2.10	2.10	2.40	2.50 "

D Short	115cm ^{**}	1.20	1.20	1.30	1.60	1.60 m
	150cm ^{**}	1.20	1.20	1.30	1.30	1.30 "

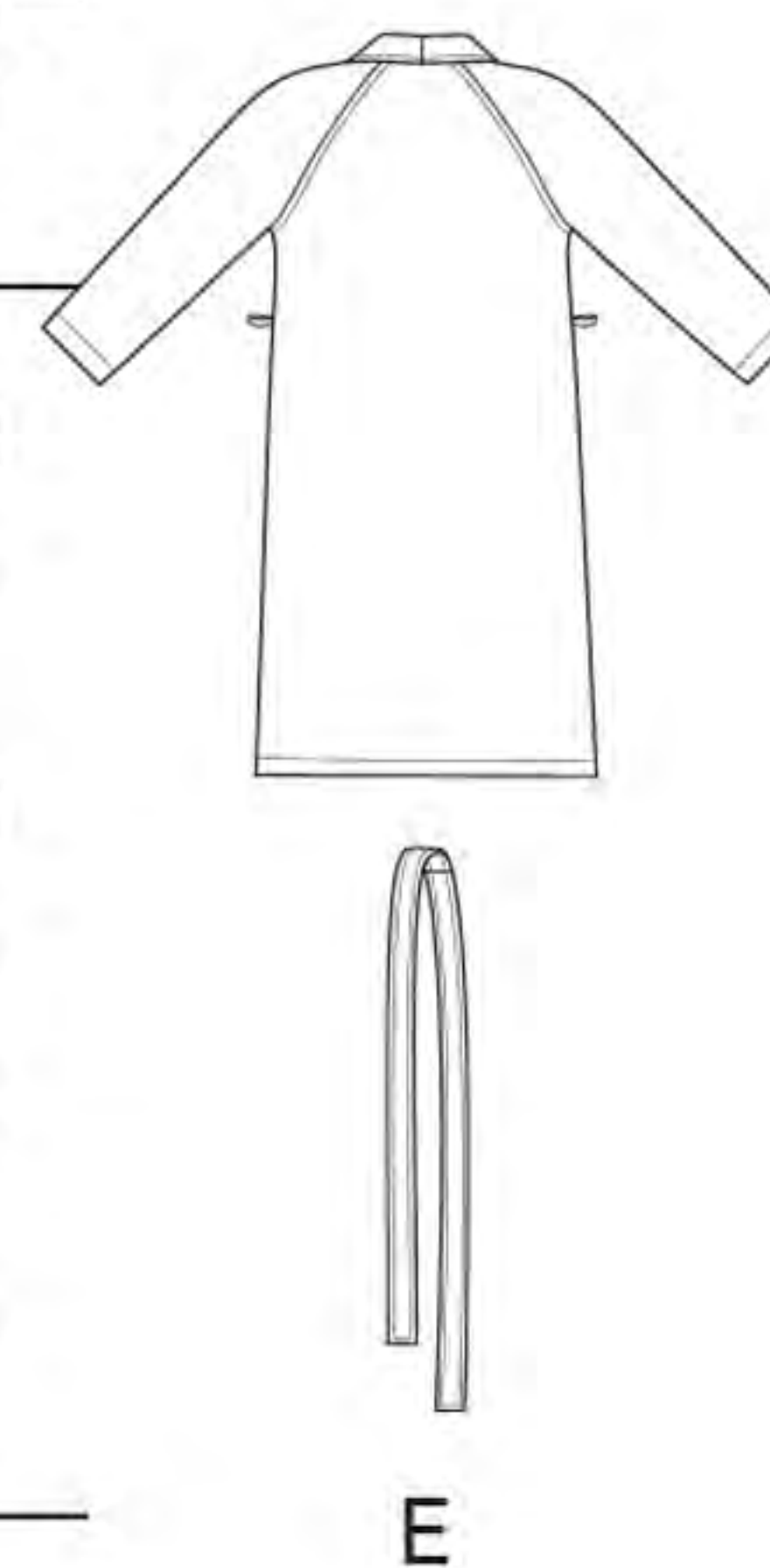
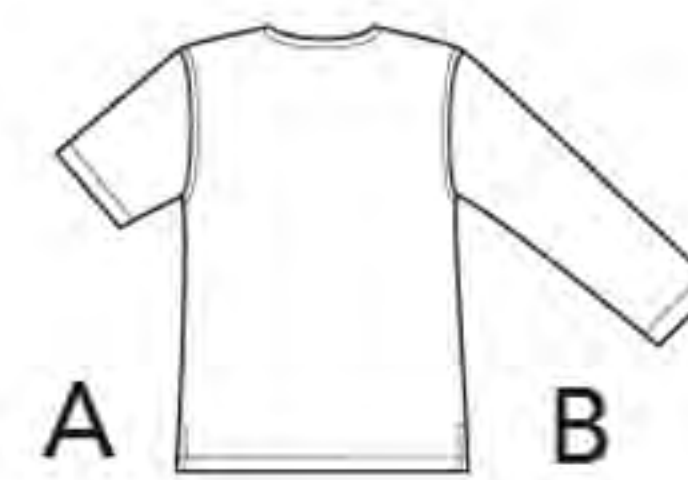
E Peignor/ E Bata

	115cm ^{**}	3.70	3.80	4.70	4.90	5.10 m
	150cm ^{**}	3.20	3.60	3.70	3.80	3.90 "

Entoilage- 2.20m de 51cm à 64cm, léger, thermocollant

Entretela- 2.20m de de 51cm a 64cm, ligera, termoadhesiva

*without nap **with nap ***with or without nap *sans sens **avec sens ***avec ou sans sens
*sin pelusa **con pelusa ***con o sin pelusa



Instrucciones de costura en Español en el Interior del Patrón.