

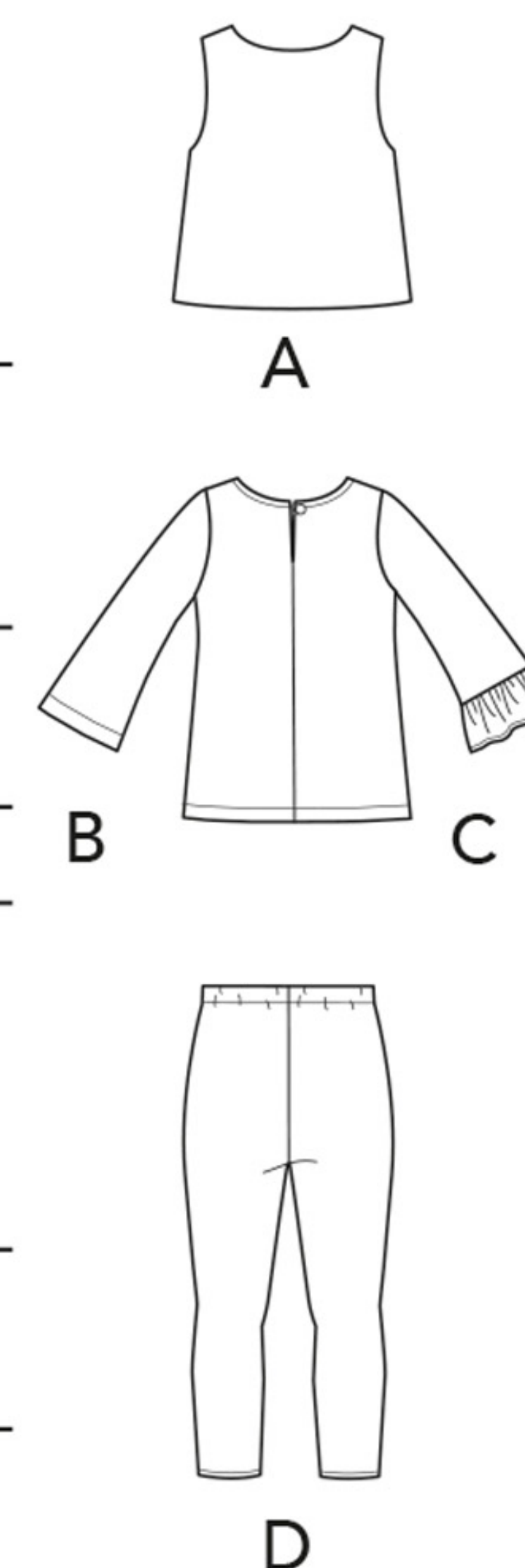
S9198 8 PIECES/PIEZAS

CHILDREN'S TOPS, VEST AND LEGGINGS

Fabrics: **A Vest:** Sherpa, Short Pile Fleece, Fur. **A Lining:** Cotton Blends, Lining Fabric.
B,C Tops and D Leggings: Cotton Knits, Jersey. See Pick-A-Knit® Rule. Suitable for Overlock/Serger. Extra fabric needed to match plaids, stripes or one-way design fabrics.

Notions: **A Vest:** One 1" (2.5cm) button. **B,C Tops:** One ½" (1.3cm) button. **D Leggings:** 1 yd. (1.0m) of ¾" (2.0cm) wide elastic.

Sizes	3	4	5	6	7	8	
A Vest							
60"***	5/8	5/8	5/8	5/8	5/8	5/8	Yd
A Lining							
45"***	5/8	5/8	5/8	5/8	5/8	5/8	Yd
B Top							
60"***	3/4	3/4	3/4	3/4	1	1 1/8	Yd
C Top							
60"***	3/4	3/4	7/8	7/8	7/8	1	Yd
D Leggings							
60"***	7/8	7/8	7/8	1	1	1	Yd



FINISHED GARMENT MEASUREMENTS

A Chest	26½	27½	28½	29½	30½	31½	In
B,C Chest	23	24	25	26	27	28	"
D Hip	22	23	24	25	26	27	"
B,C Width	25½	26½	27½	28½	29½	30½	"
D Leg Width	7	7½	8	8½	9½	10	"
Finished back length from base of neck:							
A Length	14	14½	15	15½	16	16½	In
B,C Length	17	17½	18	18½	19	19½	"
D Length	23	24	25	26	27	28	"

ENFANT: HAUTS, GILET ET LEGGINGS/ NIÑAS: TOPS, CHALECO Y LEGGINGS

Tailles/ Tallas	3	4	5	6	7	8	
A Gilet/ A Chaleco							
150cm**	0.60	0.60	0.60	0.60	0.60	0.60	m
A Doublure/ A Forro							
115cm**	0.60	0.60	0.60	0.60	0.60	0.60	m
B Haut/ B Top							
150cm**	0.60	0.70	0.70	0.70	1.00	1.10	m
C Haut/ C Top							
150cm**	0.60	0.70	0.70	0.80	0.80	1.00	m
D Leggings							
150cm**	0.80	0.80	0.80	1.00	1.00	1.00	m

*without nap **with nap ***with or without nap
 *sin pelusa **con pelusa ***sin o con pelusa

*sans sens **avec sens ***avec ou sans sens

Instrucciones de costura en Español en el Interior del Patrón.