

S9167

13 PIECES

MISSES' COSTUMES

Fabrics: Dupioni, Linen Blends, Satin, Taffeta, Tissue Lame. **A Bow Interlining** in Netting. **B Contrast Collar and Belt** also in Brocade, **Contrast Cape** in Chiffon, Crinkled Gauze, Georgette, Mesh. **C Contrast Stole** in Faux Fur. Extra fabric needed to match plaids, stripes or one-way design fabrics.

Notions: Thread, one 22" invisible zipper. **A:** 2¼" length of ¾" hook and loop tape, two small snaps. **B:** 7 yds. of ¼" wide braid trim, ⅜ yd. of ¾" hook and loop tape.

Sizes	6	8	10	12	14	16	18	20	22
European	32	34	36	38	40	42	44	46	48

A Costume: Dress, Belt and Bow

45"***	3⅞	3⅞	3⅞	3⅞	3⅞	3⅞	4¾	5	5⅞	Yd
60"***	3¼	3¼	3¼	3¼	3¼	3¼	3¼	3¾	3½	"

Bow Interlining- ⅝ yd. of 54" wide net

Interfacing- 2⅜ yds. of 20" to 25" lightweight fusible

B Costume: Dress

45"***	2¼	2¼	2⅝	2¾	3¼	3¼	3¼	3½	3½	Yd
60"***	2	2⅞	2⅞	2⅞	2⅞	2⅞	2⅞	2¼	2¼	"

Contrast Collar and Belt

45" to 60"***	1	1	1	1⅞	1⅞	1⅞	1⅞	1¼	1¼	Yd
---------------	---	---	---	----	----	----	----	----	----	----

Contrast Cape

45"***	1¾	1⅞	2	2	2⅞	2⅞	2¼	2¼	2¼	Yd
60"***	1¼	1¼	1¼	1¼	1¼	1¼	1¼	1¼	1¼	"

Interfacing- 3⅜ yds. of 20" to 25" lightweight fusible

C Costume: Dress Right Front and Right Back (shown in black)

45" to 60"***	1⅞	1⅞	1⅞	1⅞	1⅞	1½	1½	1½	1½	Yd
---------------	----	----	----	----	----	----	----	----	----	----

Contrast Dress Left Front and Left Back (shown in red)- purchase same amount as above

Dress Interfacing- 1¼ yds. of 20" to 25" lightweight fusible

Contrast Stole

60"***	1	1	1⅞	1⅞	1⅞	1⅞	1⅞	1⅞	1¼	Yd
--------	---	---	----	----	----	----	----	----	----	----

Stole Lining

45"*	⅞	1	1	1⅞	1⅞	1⅞	1¼	1¼	1⅞	Yd
------	---	---	---	----	----	----	----	----	----	----

FINISHED GARMENT MEASUREMENTS

A,B,C Bust	32½	33½	34½	36	38	40	42	44	46	In
------------	-----	-----	-----	----	----	----	----	----	----	----

A,B,C Hip	35	36	37	38½	40½	42½	44½	46½	48½	"
-----------	----	----	----	-----	-----	-----	-----	-----	-----	---

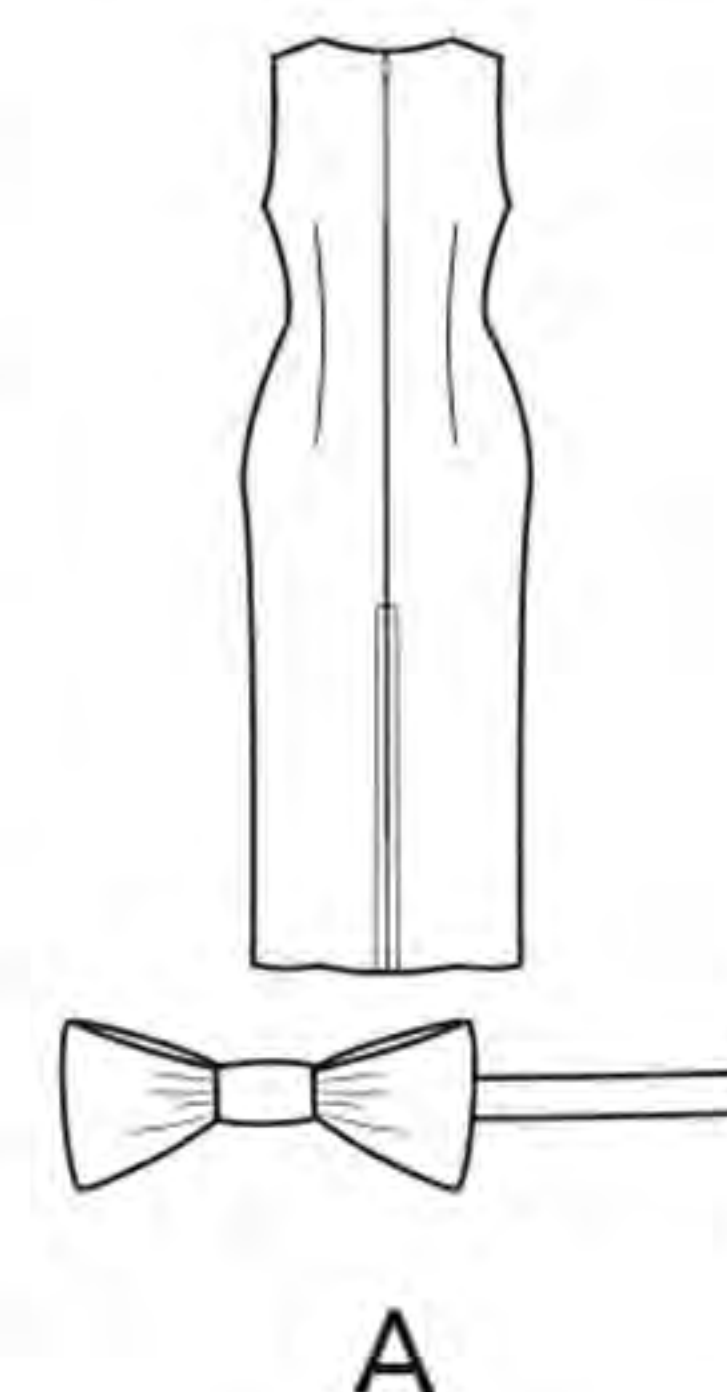
Finished back length from base of neck:

A,B Dress	55½	55¾	56	56¼	56½	56¾	57	57¼	57½	In
-----------	-----	-----	----	-----	-----	-----	----	-----	-----	----

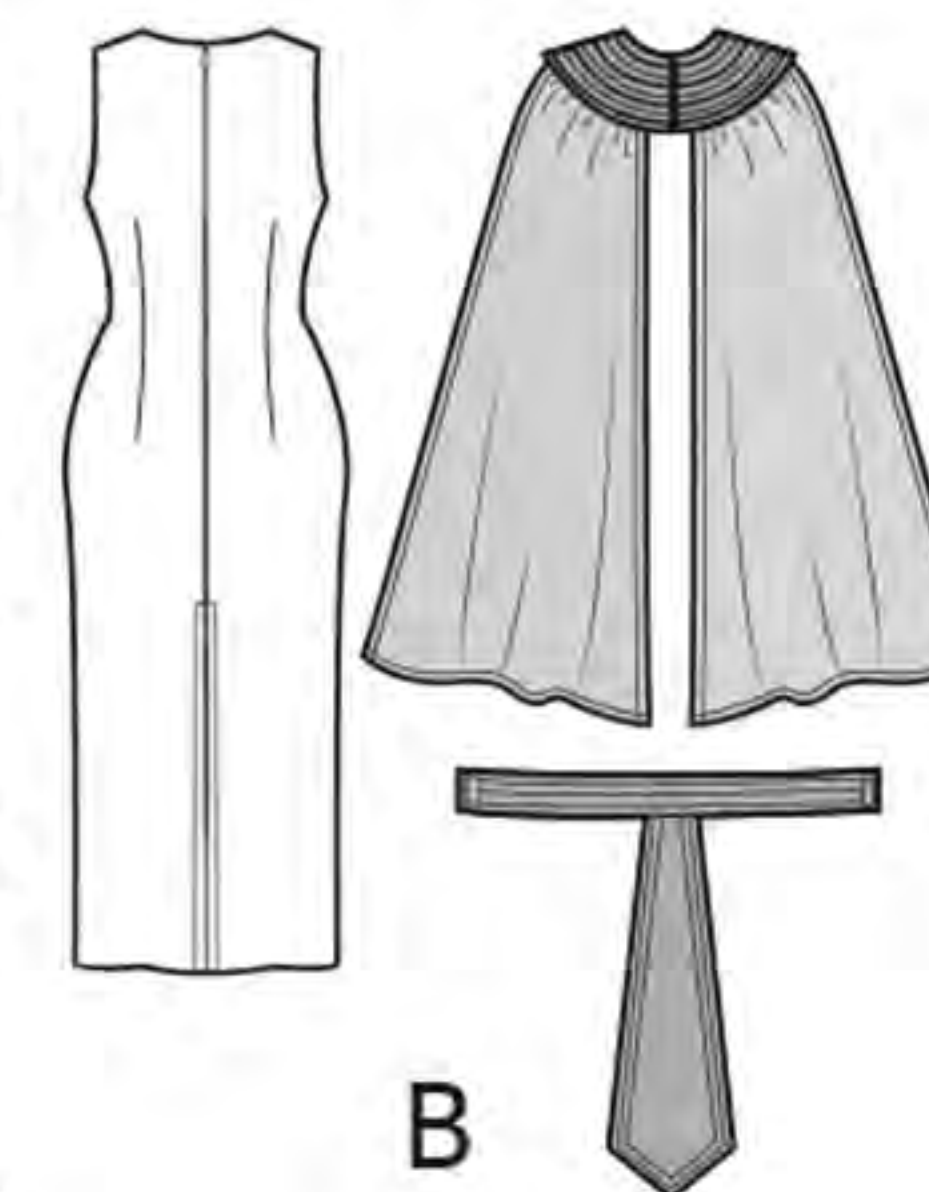
C Dress	41½	41¾	42	42¼	42½	42¾	43	43¼	43½	"
---------	-----	-----	----	-----	-----	-----	----	-----	-----	---

A,B Dress Width	35	36	37	38½	40½	42½	44½	46½	48½	"
-----------------	----	----	----	-----	-----	-----	-----	-----	-----	---

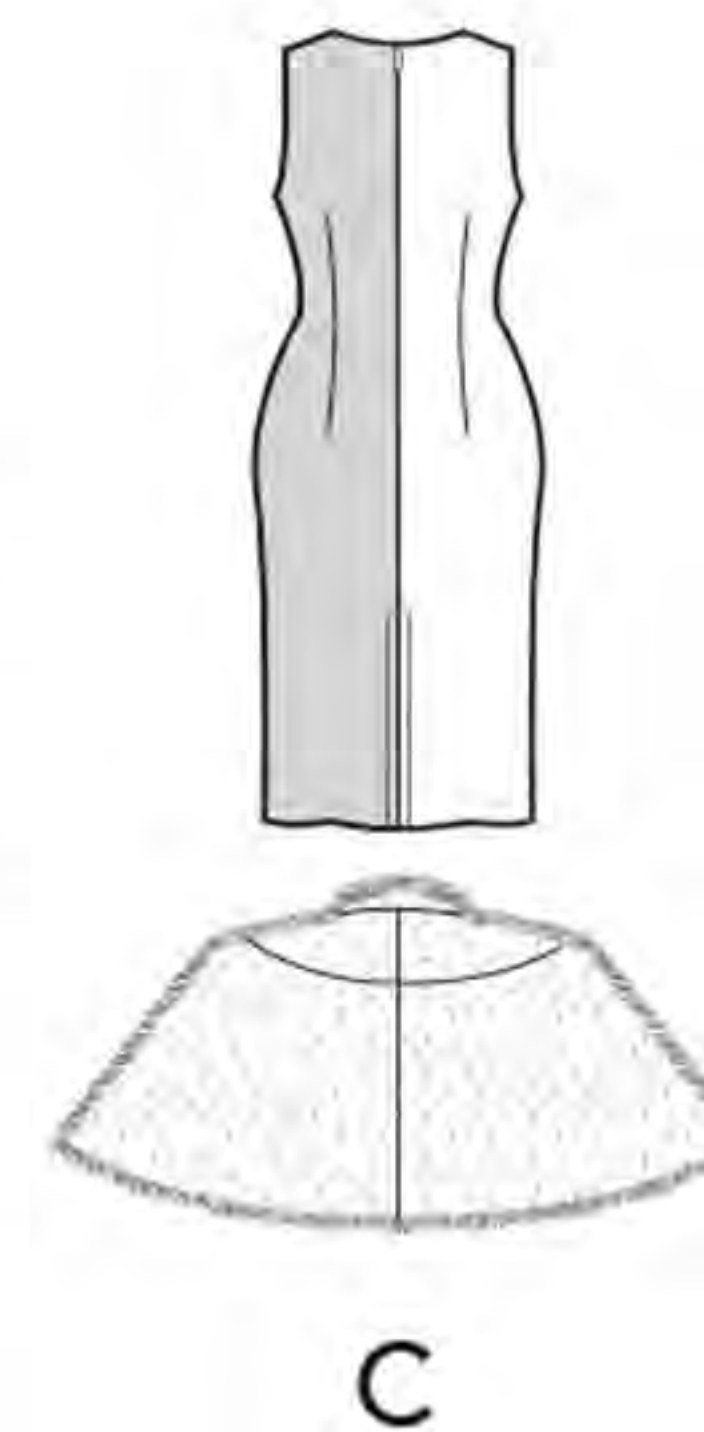
*without nap **with nap ***with or without nap



A



B



C