

# S9165

16 PIECES

## MISSES' COSTUME DRESSES

**Fabrics:** Satin, Taffeta, Jacquards, Cotton Blends, Velvet. **C Contrast Sleeves** also in Novelty Mesh, Lace. **C Contrast Belt** also in Upholstery-weight Faux Leather, Vinyl. **C Belt Interfacing:** Felt. **Lining:** Cotton, Cotton Blends, Lining fabric. Extra fabric needed to match plaids, stripes or one-way design fabrics.

**Notions:** Thread, one 22" invisible zipper. **B:** ¼ yd. of ½" wide hook and loop tape. **C:** 2½ yds. of ¾" wide studded trim, ⅜ yd. of ½" wide hook and loop tape, two O-rings.

Sizes	6	8	10	12	14	16	18	20	22	24
European	32	34	36	38	40	42	44	46	48	50

### A Costume Dress

45***	2¼	2¼	2¼	2¼	2½	2½	2½	2½	2½	2½	Yd
60***	1⅞	1⅞	1⅞	1⅞	2⅞	2⅞	2⅞	2⅞	2⅞	2⅞	"

### Contrast Sleeves and Peplum Lining

45***	1¼	1¼	1¼	1¾	1¾	1¾	1¾	1¾	1½	1½	Yd
60***	1	1	1	1	1	1	1½	1½	1½	1¼	"

### Bodice Lining

45**	⅝	¾	⅞	⅞	⅞	1	1	1	1	1	Yd
------	---	---	---	---	---	---	---	---	---	---	----

### B Costume Dress

45***	2½	2½	2½	2½	2⅞	2⅞	3	3	3	3	Yd
60***	2⅞	2⅞	2⅞	2⅞	2¼	2¼	2¾	2¾	2¾	2½	"

### Contrast Peplum Bands

45***	⅞	⅞	⅞	⅞	⅞	⅞	⅞	⅞	⅞	⅞	Yd
60***	¾	¾	¾	¾	¾	¾	¾	¾	¾	¾	"

**Contrast Belt-** ¼ yd. of 45" or 60"\*\*\*

### Bodice and Peplum Lining

45**	1½	1⅝	1⅝	1⅝	1⅝	1⅝	1¾	1¾	1¾	1¾	Yd
------	----	----	----	----	----	----	----	----	----	----	----

**Interfacing-** 1⅞ yds. of 20" to 25" lightweight fusible

### C Costume Dress

45***	2¾	2¾	2¾	2¾	2¾	2¾	2¾	2¾	2¾	2½	Yd
60***	1⅝	1⅝	1¾	1¾	1¾	1¾	1¾	1¾	1¾	1⅞	"

**Contrast Sleeves-** ¾ yd. of 45" or 60"\*\*\*

**Contrast Belt-** ¼ yd. of 45" or 60"\*\*\*; **Interfacing-** ¼ yd. of 72" felt

### Bodice and Peplum Lining

45**	1¼	1¼	1¼	1¾	1¾	1¾	1½	1½	1½	1⅝	Yd
------	----	----	----	----	----	----	----	----	----	----	----

## FINISHED GARMENT MEASUREMENTS

A,B,C Bust	34	35	36	37½	39½	41½	43½	45½	47½	49½	In
A,B,C Hip	35½	36½	37½	39	41	43	45	47	49	51	"
<b>Finished back length from base of neck:</b>											
A,B,C Dress	39½	39¾	40	40¼	40½	40¾	41	41¼	41½	41¾	In
A,B,C Dress Width	34	35	36	37½	39½	41½	43½	45½	47½	49½	In

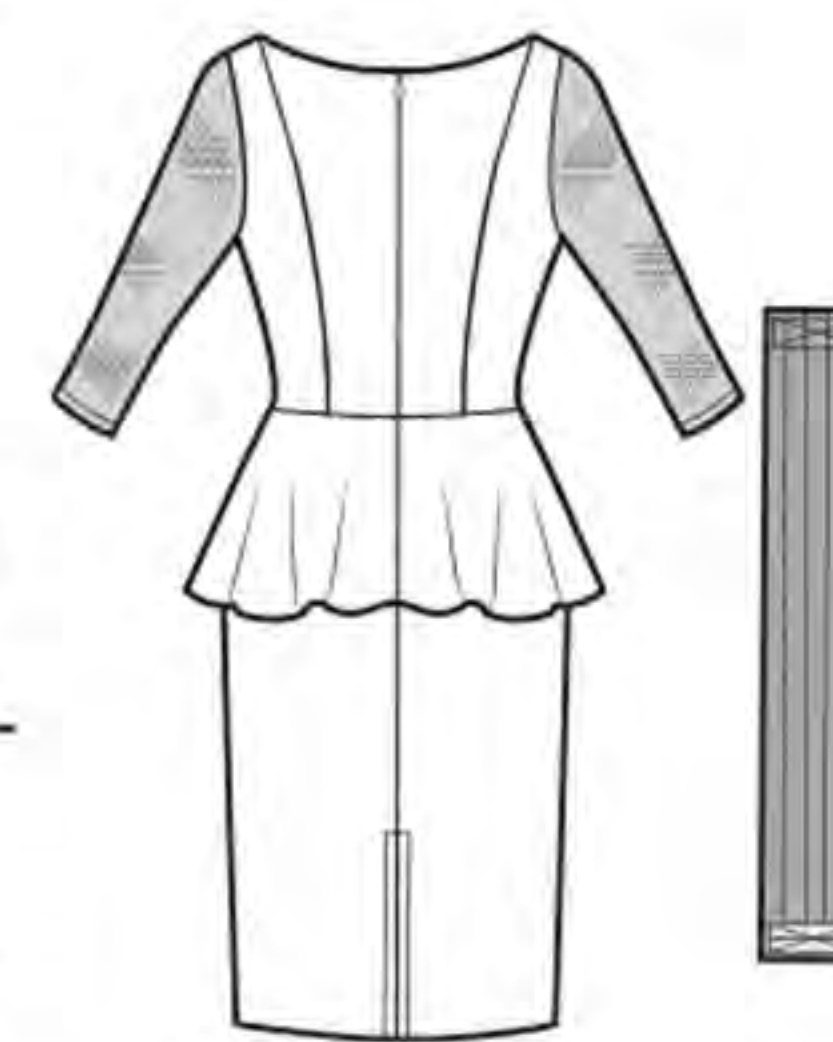
\*without nap \*\*with nap \*\*\*with or without nap



A



B



C