

S9156

10 PIECES/PIEZAS

CHILDREN'S AND GIRLS' SHORT SLEEVE TOP, SHORTS, A-LINE DRESS, AND SLEEVELESS ROMPER

Fabrics: Cotton Types such as Chambray, Crepe, Gingham, Linen, Poplin, Sateen, Seersucker. Not suitable for sleepwear. Extra fabric needed to match plaids, stripes or one-way design fabrics.

Notions: Thread. **A,B:** One $\frac{3}{8}$ " button. **A,C:** One pkg. of $\frac{1}{2}$ " wide single fold bias tape. **C,D:** $\frac{7}{8}$ yd. of $\frac{3}{4}$ " wide elastic.

Sizes 3 4 5 6 7 8 10 12 14

A Dress

45***	1	1	1	1 $\frac{1}{8}$	1 $\frac{1}{4}$	1 $\frac{1}{4}$	1 $\frac{5}{8}$	1 $\frac{7}{8}$	2 $\frac{1}{8}$	Yd
60***	$\frac{3}{4}$	$\frac{3}{4}$	$\frac{7}{8}$	$\frac{7}{8}$	1	1	1	1 $\frac{1}{8}$	1 $\frac{1}{4}$	"

A,B Interfacing- $\frac{3}{8}$ yd. of 20" to 25" lightweight fusible

B Top

45***	$\frac{3}{4}$	$\frac{3}{4}$	$\frac{7}{8}$	$\frac{7}{8}$	$\frac{7}{8}$	$\frac{7}{8}$	$\frac{7}{8}$	1	1	Yd
60***	$\frac{5}{8}$	$\frac{5}{8}$	$\frac{5}{8}$	$\frac{5}{8}$	$\frac{3}{4}$	$\frac{7}{8}$	$\frac{7}{8}$	1	1	"

C Romper

45***	1	1	1 $\frac{1}{8}$	1 $\frac{1}{8}$	1 $\frac{1}{8}$	1 $\frac{1}{4}$	1 $\frac{3}{8}$	1 $\frac{1}{2}$	1 $\frac{5}{8}$	Yd
60***	$\frac{7}{8}$	$\frac{7}{8}$	$\frac{7}{8}$	1	1	1	1 $\frac{1}{8}$	1 $\frac{1}{8}$	1 $\frac{1}{4}$	"

C Interfacing- $\frac{3}{8}$ yd. of 20" to 25" lightweight fusible

D Shorts

45***	$\frac{5}{8}$	$\frac{5}{8}$	$\frac{5}{8}$	$\frac{3}{4}$	$\frac{3}{4}$	$\frac{3}{4}$	1	1 $\frac{1}{8}$	1 $\frac{1}{8}$	Yd
60***	$\frac{1}{2}$	$\frac{1}{2}$	$\frac{1}{2}$	$\frac{1}{2}$	$\frac{5}{8}$	$\frac{5}{8}$	$\frac{5}{8}$	$\frac{5}{8}$	$\frac{5}{8}$	"

FINISHED GARMENT MEASUREMENTS

A,B,C Chest 31 32 33 34 38 39 40 $\frac{1}{2}$ 42 44 In

Finished back length from base of neck:

A Dress 19 $\frac{1}{2}$ 20 $\frac{1}{2}$ 22 $\frac{1}{2}$ 24 $\frac{1}{2}$ 26 $\frac{1}{2}$ 27 $\frac{1}{2}$ 29 $\frac{1}{2}$ 31 $\frac{1}{2}$ 33 $\frac{1}{2}$ In

B Top 11 $\frac{1}{2}$ 12 12 $\frac{1}{2}$ 13 14 15 16 16 17 $\frac{1}{2}$ "

C Romper 19 20 22 24 23 $\frac{1}{2}$ 24 $\frac{1}{2}$ 26 27 $\frac{1}{2}$ 29 "

D Side Length 10 10 $\frac{1}{2}$ 11 11 $\frac{1}{2}$ 11 $\frac{1}{2}$ 12 $\frac{1}{4}$ 13 13 $\frac{3}{4}$ 14 $\frac{1}{2}$ "

A Dress Width 34 35 $\frac{1}{2}$ 37 $\frac{1}{2}$ 39 $\frac{1}{2}$ 40 41 $\frac{1}{2}$ 44 $\frac{1}{2}$ 47 $\frac{1}{2}$ 50 $\frac{1}{2}$ "

ENFANTS ET FILLETES: HAUT À MANCHE COURTE, SHORT, ROBE TRAPÈZE ET

BARBOTEUSE SANS MANCHES

NIÑAS PEQUEÑAS Y NIÑAS: TOP DE MANGA CORTA, SHORT, VESTIDO EN A Y MAMELUCO SIN MANGAS

Tailles 3 4 5 6 7 8 10 12 14

A Robe/ A Vestido

115cm** 0.90 0.90 0.90 1.00 1.10 1.10 1.40 1.70 1.90 m

150cm** 0.70 0.70 0.80 0.80 0.90 0.90 1.00 1.00 1.10 "

A,B Entoilage- 0.40m de 51cm à 64cm, léger, thermocollant

A,B Entretela- 0.40m de 51cm a 64cm, ligera, adhesiva

B Haut/ B Blusa

115cm** 0.70 0.70 0.70 0.80 0.80 0.80 0.90 0.90 0.90 m

150cm** 0.50 0.50 0.50 0.60 0.60 0.80 0.80 0.90 0.90 "

C Barboteuse/ C Mameluco

115cm** 0.90 1.00 1.00 1.00 1.10 1.10 1.30 1.30 1.40 m

150cm** 0.80 0.80 0.80 0.90 0.90 0.90 1.00 1.10 1.10 "

C Entoilage- 0.30m de 51cm à 64cm, léger, thermocollant

C Entretela- 0.30m de 51cm a 64cm, ligera, adhesiva

D Short

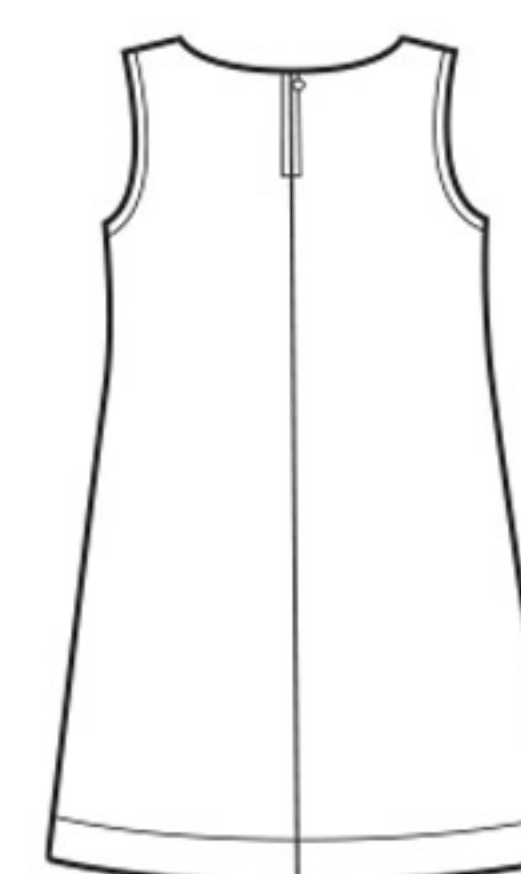
115cm** 0.60 0.60 0.60 0.60 0.70 0.70 1.00 1.00 1.00 m

150cm** 0.50 0.50 0.50 0.50 0.50 0.50 0.60 0.60 0.60 "

*without nap **with nap ***with or without nap

*sans sens **avec sens ***avec ou sans sens

*sin pelusa **con pelusa ***con o sin pelusa



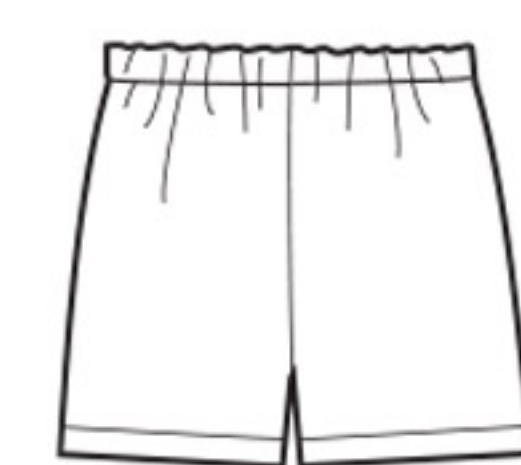
A



B



C



D

Instrucciones de costura en Español en el Interior del Patrón.