

# S9148

9 PIECES/PIEZAS

## MISSES' PULL-ON SKIRTS AND FLOWY TOP

**Fabrics:** Challis, Cotton Lawn, Cotton Types, Crepe, Gauze, Silky Types, Voile, Jersey Knit: Bamboo Knit, ITY. Extra fabric needed to match plaids, stripes or one-way design fabrics.

**Notions:** Thread. **A:** One  $\frac{3}{8}$ " (1cm) button. **B,C:**  $1\frac{1}{4}$  yds. (1.10m) of  $\frac{3}{4}$ " (2cm) wide elastic.

<b>Sizes</b>	6	8	10	12	14	16	18	20	22	24
<b>European</b>	32	34	36	38	40	42	44	46	48	50

### A Top

45 <sup>**</sup>	$1\frac{3}{8}$	$1\frac{3}{8}$	$1\frac{1}{2}$	$1\frac{1}{2}$	$1\frac{1}{2}$	$1\frac{5}{8}$	$1\frac{3}{4}$	$1\frac{7}{8}$	$1\frac{7}{8}$	$1\frac{7}{8}$	Yd
60 <sup>**</sup>	1	$1\frac{1}{8}$	$1\frac{1}{8}$	$1\frac{1}{8}$	$1\frac{1}{8}$	$1\frac{1}{4}$	$1\frac{1}{4}$	$1\frac{3}{8}$	$1\frac{3}{8}$	$1\frac{3}{8}$	"

### B Skirt

45 <sup>**</sup>	$2\frac{1}{4}$	$2\frac{1}{4}$	$2\frac{1}{4}$	$2\frac{1}{4}$	$2\frac{3}{8}$	$2\frac{3}{8}$	$2\frac{3}{8}$	$2\frac{3}{8}$	$2\frac{1}{2}$	$2\frac{5}{8}$	Yd
60 <sup>**</sup>	$2\frac{1}{8}$	$2\frac{1}{8}$	$2\frac{1}{8}$	$2\frac{1}{8}$	$2\frac{1}{8}$	$2\frac{1}{8}$	$2\frac{1}{8}$	$2\frac{1}{8}$	$2\frac{1}{8}$	$2\frac{1}{4}$	"

### C Skirt

45 <sup>**</sup>	$2\frac{5}{8}$	$2\frac{5}{8}$	$2\frac{5}{8}$	$2\frac{7}{8}$	$3\frac{1}{8}$	$3\frac{1}{4}$	$3\frac{3}{8}$	$3\frac{1}{2}$	$3\frac{5}{8}$	$3\frac{3}{4}$	Yd
60 <sup>**</sup>	$2\frac{5}{8}$	$2\frac{5}{8}$	$2\frac{5}{8}$	$2\frac{5}{8}$	$2\frac{5}{8}$	$2\frac{5}{8}$	$2\frac{3}{4}$	$2\frac{3}{4}$	$2\frac{3}{4}$	$2\frac{7}{8}$	"

### FINISHED GARMENT MEASUREMENTS

<b>A Bust</b>	36	37	38	$39\frac{1}{2}$	$41\frac{1}{2}$	$43\frac{1}{2}$	$45\frac{1}{2}$	$47\frac{1}{2}$	$49\frac{1}{2}$	$51\frac{1}{2}$	In
<b>B,C Hip</b>	35	36	37	$38\frac{1}{2}$	40	42	44	46	49	51	"

**Finished back length from base of neck:**

<b>A Top</b>	$20\frac{1}{2}$	$20\frac{3}{4}$	21	$21\frac{1}{4}$	$21\frac{1}{2}$	$21\frac{3}{4}$	22	$22\frac{1}{4}$	$22\frac{1}{2}$	$22\frac{3}{4}$	In
<b>B Skirt length</b>	32	32	32	32	32	32	32	32	32	32	"
<b>C Skirt length</b>	42	42	42	42	42	42	42	42	42	42	"
<b>B Skirt width</b>	71	72	73	$74\frac{1}{2}$	$76\frac{1}{2}$	$78\frac{1}{2}$	$80\frac{1}{2}$	$82\frac{1}{2}$	$85\frac{1}{2}$	$87\frac{1}{2}$	"
<b>C Skirt width</b>	78	79	80	$81\frac{1}{2}$	83	85	87	89	92	94	"

**JEUNE FEMME: JUPES À TAILLE ÉLASTIQUE ET HAUT FLOTTANT**

**SEÑORITAS: FALDAS CON CINTURA ELÁSTICA Y BLUSA FLOTANTE**

<b>Tailles/ Tallas</b>	6	8	10	12	14	16	18	20	22	24
<b>European</b>	32	34	36	38	40	42	44	46	48	50
<b>Françaises</b>	34	36	38	40	42	44	46	48	50	52

### A Haut/ A Blusa

115cm <sup>**</sup>	1.20	1.20	1.30	1.40	1.40	1.50	1.60	1.70	1.70	1.70	m
150cm <sup>**</sup>	1.00	1.00	1.00	1.00	1.00	1.20	1.20	1.20	1.30	1.30	"

### B Jupe/ B Falda

115cm <sup>**</sup>	1.90	2.00	2.00	2.00	2.10	2.10	2.10	2.20	2.20	2.30	m
150cm <sup>**</sup>	1.90	1.90	1.90	1.90	1.90	1.90	1.90	1.90	2.00	2.10	"

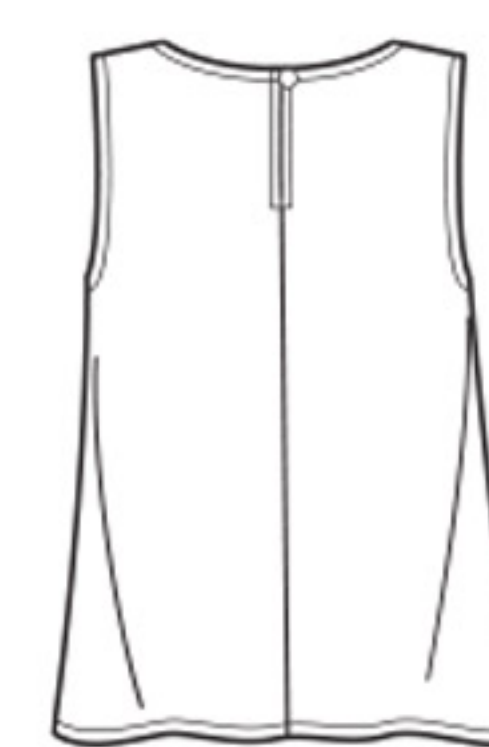
### C Jupe/ C Falda

115cm <sup>**</sup>	2.40	2.40	2.40	2.60	2.80	3.00	3.10	3.20	3.30	3.40	m
150cm <sup>**</sup>	2.40	2.40	2.40	2.40	2.40	2.40	2.50	2.50	2.50	2.60	"

\*without nap \*\*with nap \*\*\*with or without nap

\*sans sens \*\*avec sens \*\*\*avec ou sans sens

\*sin pelusa \*\*con pelusa \*\*\*con o sin pelusa



A



B

C

**Instrucciones de costura en Español en el Interior del Patrón.**