

S9130 12 PIECES/PIEZAS

MISSES' AND WOMEN'S SKIRT, PANTS, TUNIC AND SCARF

Fabrics: Laundered Cottons, Batiks, Challis, Crepe Back Satin, Laundered Silks-Rayons, Crinkled Gauze, Matte Jerseys, Handkerchief Linen. **B,C,E** also in Pique, Poplin, Twill. **F** also in Double Georgette, Novelty Sheer Fabrics. Extra fabric needed to match plaids, stripes or one-way design fabrics.

Notions: Thread. **B:** One pkg. of Middy Braid (opt.).

Sizes	10	12	14	16	18	20W	22W	24W	26W	28W	
European	36	38	40	42	44	46	48	50	52	54	
A Tunic											
45"***	2½	2½	2¼	2¼	2¼	3	3	3	3	3½	Yd
60"***	1½	1½	1¾	1¾	1¾	2	2½	2¼	2¼	2¼	"
B Tunic											
45"***	1½	1½	1½	1½	1½	2¾	2¾	2¾	2¾	2¾	Yd
60"***	1½	1½	1½	1½	1½	1¾	2½	2½	2½	2½	"
C Tunic											
45"***	1½	1½	1½	1½	1½	2½	2½	2½	2¼	2¾	Yd
60"***	1½	1½	1½	1½	1½	1½	2½	2½	2½	2½	"
A,B,C Interfacing- ½ yd. of 22" to 25" lightweight fusible, such as Pellon®											
D Skirt											
45"***	2½	2½	2½	2½	2½	2¾	2½	3	3¼	3¼	Yd
60"***	2½	2½	2½	2½	2½	2¼	2¼	2¼	2¼	2¼	"
D,E Elastic- 1¾ yd. of ½" wide											
E Pants											
45"***	2½	2½	2½	2½	2½	2¾	2¾	2¾	2¾	2¾	Yd
60"***	1½	1½	2¼	2¼	2¼	2¼	2¾	2½	2¾	2¾	"
F Scarf- 1½ yd. of 45" or 60"***											

FINISHED GARMENT MEASUREMENTS

A,B,C Bust	37½	39	41	43	45	47½	49½	51½	53½	55½	In
D Hip	36½	38	40	42	44	47	49	51	53	55	"
E Hip	37	38½	40½	42½	44½	47	49	51	53	55	"
D Length	34	34	34	34	34	35	35	35	35	35	"
E Side Length	41	41¼	41½	41¾	42	42	42	42	43	43	"
D Width	74½	76	78	80	82	83	85	87	89	91	"
E Leg Width	20	20¾	21½	22¼	23	21¼	22	22¾	23½	24¼	"

JEUNE FEMME ET FEMME: JUPE, PANTALON, TUNIQUE ET ECHARPE

SEÑORITAS Y SEÑORAS: FALDA, PANTALÓN, TÚNICA Y BUFANDA

Tailles/Tallas	10	12	14	16	18	20W	22W	24W	26W	28W
Françaises	38	40	42	44	46	48	50	52	54	56
Europeas	36	38	40	42	44	46	48	50	52	54

A Tunique/ A Túnica

115cm**	2.00	2.00	2.00	2.00	2.00	2.70	2.70	2.70	2.80	2.80	m
150cm**	1.50	1.50	1.50	1.60	1.60	1.80	2.00	2.00	2.00	2.00	"

B Tunique/ B Túnica

115cm**	1.70	1.70	1.70	1.70	1.70	2.50	2.50	2.50	2.50	2.50	m
150cm**	1.40	1.40	1.40	1.50	1.50	1.60	1.90	1.90	1.90	1.90	"

C Tunique/ C Túnica

115cm**	1.70	1.70	1.70	1.70	1.70	1.90	1.90	1.90	2.10	2.20	m
150cm**	1.30	1.30	1.30	1.30	1.30	1.40	1.90	1.90	1.90	1.90	"

A,B,C Entoilage- 0.40m de 55cm à 64cm, léger, thermocollant tel que Pellon®

A,B,C Entretela- 0.40m de 55cm a 64cm, ligera, adhesiva como Pellon®

D Jupe/ D Falda

115cm**	2.00	2.00	2.00	2.00	2.00	2.20	2.40	2.70	3.00	3.50	m
150cm**	2.00	2.00	2.00	2.00	2.00	2.00	2.00	2.00	2.00	2.00	"

D,E Elastique- 1.30m de 1.3cm de large/ **D,E Elástico-** 1.30m de 1.3cm de ancho

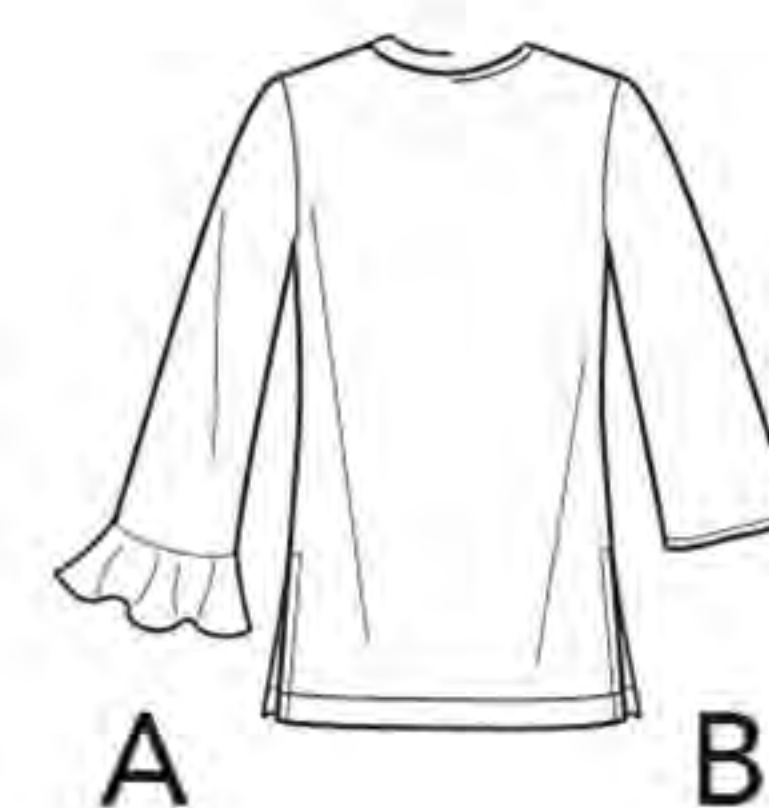
E Pantalon/ E Pantalón

115cm**	2.40	2.40	2.40	2.40	2.40	2.50	2.50	2.50	2.50	2.50	m
150cm**	1.30	1.40	2.10	2.10	2.10	2.10	2.20	2.30	2.50	2.50	"

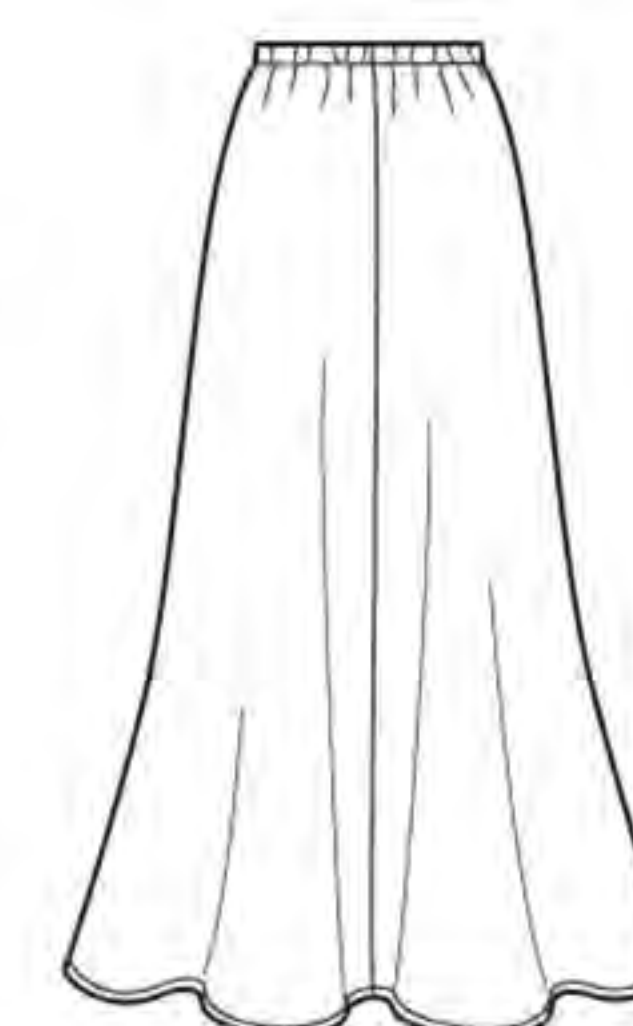
F Echarpe- 1.10m de 115cm ou 150cm**/ **F Bufanda-** 1.10m de 115cm o 150cm**

*without nap **with nap ***with or without nap *sans sens **avec sens ***avec ou sans sens

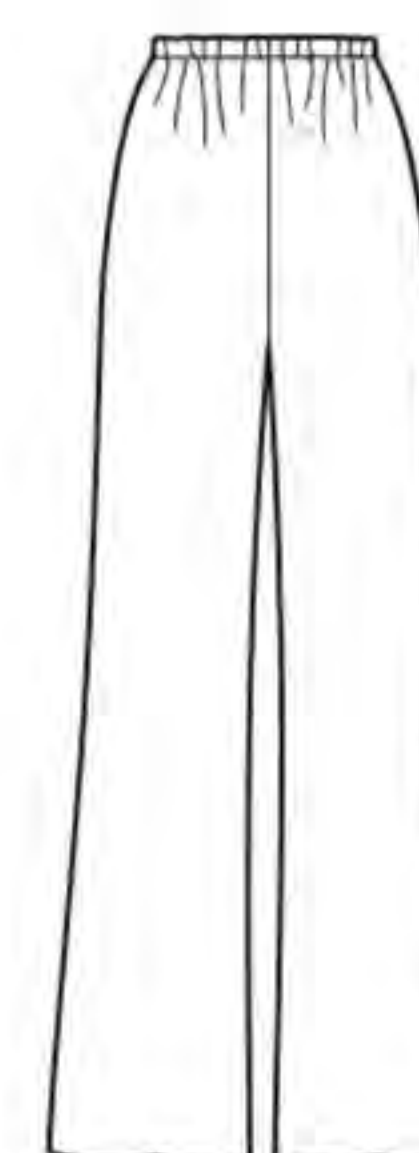
*sin pelusa **con pelusa ***sin o con pelusa



C



D



E



F

Instrucciones de costura en Español en el Interior del Patrón.