

S9102 10 PIECES/PIEZAS

MISSES' CAFTAN AND DRESSES

Fabrics: Batiks, Cotton Lawn, Cotton Types, Gauze, Linen Types, Shirtings, Voile.
Extra fabric needed to match plaids, stripes or one-way design fabrics.

Notions: Thread, two $\frac{5}{8}$ " buttons. **C,D:** One pkg. of $\frac{1}{2}$ " wide single fold bias tape.

Sizes	6	8	10	12	14	16	18	20	22	24
European	32	34	36	38	40	42	44	46	48	50

A,B,C,D Interfacing- $\frac{3}{4}$ yd. of 20" to 25" lightweight fusible, such as Pellon®

A Caftan

45"***	4 $\frac{1}{8}$	4 $\frac{1}{8}$	4 $\frac{1}{4}$	4 $\frac{1}{4}$	4 $\frac{1}{4}$	4 $\frac{3}{8}$	4 $\frac{3}{4}$	4 $\frac{3}{4}$	4 $\frac{3}{4}$	4 $\frac{3}{4}$	Yd
60"***	3	3 $\frac{1}{8}$	3 $\frac{1}{8}$	3 $\frac{1}{8}$	3 $\frac{1}{8}$	3 $\frac{1}{8}$	3 $\frac{3}{4}$	3 $\frac{3}{4}$	3 $\frac{3}{4}$	3 $\frac{3}{4}$	"

B Dress

45"***	3	3	3 $\frac{1}{8}$	3 $\frac{1}{8}$	3 $\frac{1}{8}$	3 $\frac{3}{8}$	3 $\frac{5}{8}$	3 $\frac{5}{8}$	3 $\frac{5}{8}$	3 $\frac{5}{8}$	Yd
60"***	2 $\frac{1}{8}$	2 $\frac{1}{8}$	2 $\frac{1}{8}$	2 $\frac{1}{4}$	2 $\frac{1}{4}$	2 $\frac{1}{4}$	2 $\frac{5}{8}$	2 $\frac{5}{8}$	2 $\frac{5}{8}$	2 $\frac{3}{4}$	"

C Dress

45"***	2 $\frac{3}{4}$	2 $\frac{7}{8}$	3 $\frac{1}{8}$	3 $\frac{1}{8}$	3 $\frac{1}{8}$	3 $\frac{1}{8}$	3 $\frac{3}{8}$	3 $\frac{3}{8}$	3 $\frac{3}{8}$	3 $\frac{3}{8}$	Yd
60"***	2 $\frac{1}{2}$	2 $\frac{1}{2}$	2 $\frac{1}{2}$	2 $\frac{1}{2}$	2 $\frac{3}{4}$	2 $\frac{7}{8}$	2 $\frac{7}{8}$	2 $\frac{7}{8}$	3	3	"

D Dress

45"***	2 $\frac{1}{8}$	2 $\frac{1}{8}$	2 $\frac{3}{8}$	2 $\frac{3}{8}$	2 $\frac{1}{2}$	2 $\frac{1}{2}$	2 $\frac{5}{8}$	2 $\frac{5}{8}$	2 $\frac{3}{4}$	2 $\frac{3}{4}$	Yd
60"***	1 $\frac{7}{8}$	1 $\frac{7}{8}$	1 $\frac{7}{8}$	1 $\frac{7}{8}$	2	2 $\frac{1}{4}$	2 $\frac{1}{4}$	2 $\frac{1}{4}$	2 $\frac{1}{4}$	2 $\frac{3}{8}$	"

FINISHED GARMENT MEASUREMENTS

A,B,C,D Bust 35 36 37 38 $\frac{1}{2}$ 40 $\frac{1}{2}$ 42 $\frac{1}{2}$ 44 $\frac{1}{2}$ 46 $\frac{1}{2}$ 48 $\frac{1}{2}$ 50 $\frac{1}{2}$ In

Finished back length from base of neck:

A Caftan 55 $\frac{1}{2}$ 55 $\frac{3}{4}$ 56 56 $\frac{1}{4}$ 56 $\frac{1}{2}$ 56 $\frac{3}{4}$ 57 $\frac{1}{4}$ 57 $\frac{1}{2}$ 57 $\frac{3}{4}$ 58 In

JEUNE FEMME: CAFTAN ET ROBES

SEÑORITAS: CAFTÁN Y VESTIDOS

Tailles/ Tallas	6	8	10	12	14	16	18	20	22	24
Françaises	34	36	38	40	42	44	46	48	50	52
Europeas	32	34	36	38	40	42	44	46	48	50

A,B,C,D Entoilage- 0.70m de 51cm à 64cm, léger, thermocollant tel que Pellon®

A,B,C,D Entretela- 0.70m de 51cm a 64cm, ligera, adhesiva como Pellon®

A Caftan/ A Caftán

115cm**	3.80	3.80	3.80	3.80	3.90	4.00	4.30	4.30	4.40	4.40	m
150cm**	2.80	2.80	2.80	2.80	2.80	2.90	3.40	3.40	3.40	3.50	"

B Robe/ B Vestido

115cm**	2.80	2.80	2.80	2.80	2.90	3.00	3.30	3.30	3.30	3.40	m
150cm**	2.00	2.00	2.00	2.00	2.00	2.00	2.40	2.40	2.40	2.50	"

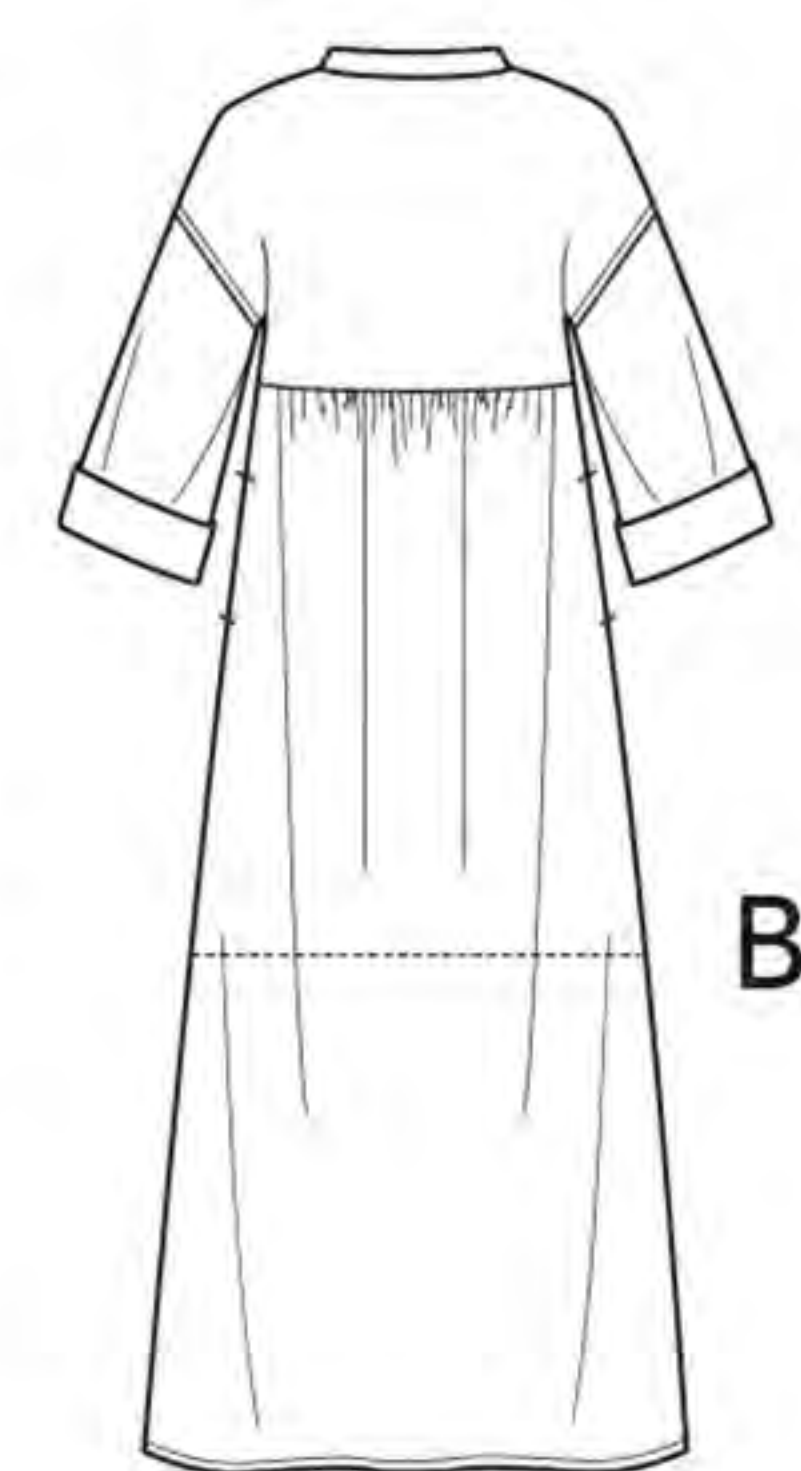
C Robe/ C Vestido

115cm**	2.60	2.60	2.80	2.80	2.90	2.90	3.00	3.10	3.10	3.10	m
150cm**	2.30	2.30	2.30	2.30	2.50	2.60	2.60	2.70	2.70	2.80	"

D Robe/ D Vestido

115cm**	2.00	2.00	2.20	2.20	2.20	2.30	2.40	2.40	2.50	2.50	m
150cm**	1.70	1.70	1.70	1.70	1.80	2.00	2.00	2.00	2.10	2.20	"

*without nap **with nap ***with or without nap *sans sens **avec sens ***avec ou sans sens
*sin pelusa **con pelusa ***sin o con pelusa



A



B



C



D

Instrucciones de costura en Español en el Interior del Patrón.