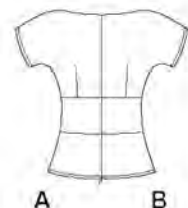


# S8882

10 PIECES/PIEZAS



## MISSES' TOP

**Fabrics:** Broadcloth, Challis, Chambray, Cotton Types, Gingham, Poplin, Sateen, Shirtings. Extra fabric needed to match plaids, stripes or one-way design fabrics.

**Notions:** Thread, one 16" invisible zipper. **A:** Three ½" buttons.

### BODY MEASUREMENTS (For Sizing Help Visit [www.simplicity.com/sizehelp](http://www.simplicity.com/sizehelp))

**Bust** 30½ 31½ 32½ 34 36 38 40 42 44 46 In

**Waist** 23 24 25 26½ 28 30 32 34 37 39 "

### Hip-9" below waist

32½ 33½ 34½ 36 38 40 42 44 46 48 In

### Back-neck to waist

15½ 15¾ 16 16¼ 16½ 16¾ 17 17¼ 17½ 17¾ In

**Sizes** 6 8 10 12 14 16 18 20 22 24

**European** 32 34 36 38 40 42 44 46 48 50

### A Top

45"\*\*\* 1¼ 1¼ 1¼ 1¼ 1¼ 1¼ 1¼ 1¼ 1¼ 1¼ Yd

60"\*\*\* 1 1 1 1 1 1 1 1¼ 1¼ 1¼ "

**Interfacing-** ⅜ yd. of 20" to 25" lightweight fusible, such as Pellon®

### B Top

45"\*\*\* 1¼ 1¼ 1¼ 1¼ 1¼ 1¼ 1¼ 1¼ 1¼ 1¼ Yd

60"\*\*\* ¾ ¾ 1 1 1 1 1¼ 1¼ 1¼ 1¼ "

**Interfacing-** ⅜ yd. of 20" to 25" lightweight fusible, such as Pellon®

### FINISHED GARMENT MEASUREMENTS (Includes Design and Wearing EASE)

**A,B Bust** 36 37 38 39½ 41½ 43½ 45½ 47½ 49½ 51½ In

### Finished back length from base of neck:

**A,B** 21 21¼ 21½ 21¾ 22 22¼ 22½ 22¾ 23 23¼ In

¼"without nap \*\*with nap \*\*\*with or without nap

## JEUNE FEMME: HAUT

**Tissus:** Popeline, Étamine, Chambray, Cotonnades, Vichy, Popeline fine, Satinette, Shirting. Prévoyez davantage de tissu pour raccorder les écossais, rayures ou motifs unidirectionnels.

**Mercerie:** Fil, une glissière invisible de 40cm. **A:** Trois boutons de 1.5cm.

## SEÑORITAS: BLUSA

**Telas:** Popelina, Chalí, Chambray, Mezclas de Algodones, Guingán, Popelina fina, Satén de Algodón, Shirting. Se necesita tela adicional para casar cuadros, rayas o telas estampadas en una dirección.

**Mercería:** Hilo, una cremallera invisible de 40cm. **A:** Tres botones de 1.5cm.

### MESURES NORMALISÉES/MEDIDAS DEL CUERPO

**Poitrine/Busto** 78 80 83 87 92 97 102 107 112 117 cm

**Taille/Cintura** 58 61 64 67 71 76 81 87 94 99 "

### Hanches (23cm au-dessous de la taille)/Caderas (23cm abajo de la cintura)

83 85 88 92 97 102 107 112 117 122 cm

### Dos (encolure à taille)/Espalda (escote a cintura)

39.5 40 40.5 41.5 42 42.5 43 44 44 44.5 cm

**Tailles/Tallas** 6 8 10 12 14 16 18 20 22 24

**Françaises** 34 36 38 40 42 44 46 48 50 52

**Europeas** 32 34 36 38 40 42 44 46 48 50

### A Haut/A Blusa

115cm\*\* 1.00 1.00 1.10 1.10 1.10 1.20 1.30 1.40 1.50 1.60 m

150cm\*\* 1.00 1.00 1.00 1.00 1.00 1.00 1.00 1.00 1.10 1.10 "

**Entoilage-** 0.50m de 51cm à 64cm, léger, thermocollant tel que Pellon®

**Entretela-** 0.50m de 51cm a 64cm, ligera, adhesiva como Pellon®

### B Haut/B Blusa

115cm\*\* 1.10 1.10 1.10 1.10 1.10 1.20 1.30 1.40 1.50 1.60 m

150cm\*\* 0.80 0.80 0.90 0.90 0.90 0.90 1.00 1.00 1.10 1.10 "

**Entoilage-** 0.50m de 51cm à 64cm, léger, thermocollant tel que Pellon®

**Entretela-** 0.50m de 51cm a 64cm, ligera, adhesiva como Pellon®

\*sans sens \*\*avec sens \*\*\*avec ou sans sens \*sin pelusa \*\*con pelusa \*\*\*sin o con pelusa