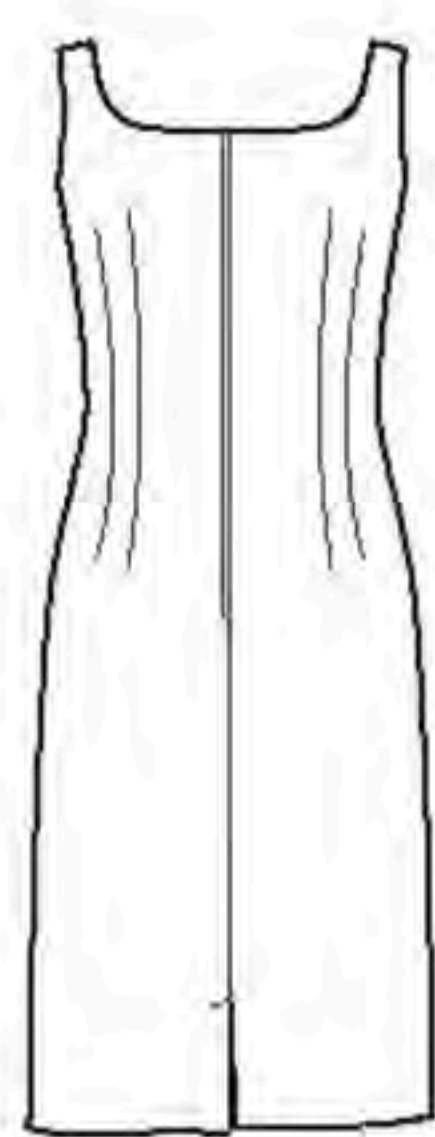


8460

20 PIECES/PIEZAS

Medidas e Instrucciones de costura en Español en el Interior del Patrón.



A



B



C

MISSES' VINTAGE DRESS AND JACKETS

Fabrics: **A,B and C Binding** in Brocade, Cotton Types, Crepe, Dupioni, Gabardine, Linen Types, Pique, Sateen, Shantung. **C Front, Back and Sleeves** in Lace, Organza. Extra fabric needed to match plaids, stripes or one-way design fabrics.

Notions: Thread. **A:** One 18" zipper, 1¼ yd. of ½" wide grosgrain ribbon, one hook and eye. **B:** Three 1¼" buttons or button forms to cover. Look for Simplicity Trims.

BODY MEASUREMENTS (For Sizing Help Visit www.simplicity.com/sizehelp)

Bust	30½	31½	32½	34	36	38	40	42	44	In
Waist	23	24	25	26½	28	30	32	34	37	"
Hip-9" below waist	32½	33½	34½	36	38	40	42	44	46	"
Back-neck to waist	15½	15¾	16	16¼	16½	16¾	17	17¼	17¾	"
Sizes	6	8	10	12	14	16	18	20	22	
European	32	34	36	38	40	42	44	46	48	

A Dress										
45***	1¼	1¼	1⅞	1⅞	2¼	2¼	3	3	3	Yd
60***	1¼	1¼	1¼	1¼	1¼	1¼	1¼	1¼	1¼	"

Interfacing- ⅞ yd. of 20" to 25" lightweight fusible, such as Pellon®

B Jacket										
45***	1½	1½	1⅝	1⅝	1¾	1¾	1¾	1¾	1¾	Yd
60***	1¼	1¼	1⅜	1⅜	1⅞	1⅞	1⅞	1⅞	1⅞	"

Lining										
45**	1	1⅞	1⅞	1⅞	1⅞	1⅞	1⅞	1⅞	1⅞	Yd

Interfacing- 1⅞ yd. of 20" to 25" lightweight fusible, such as Pellon®

C Jacket										
45***	1	1	1⅞	1⅞	1⅞	1⅞	1⅞	1⅞	1⅞	Yd
60***	⅝	⅝	⅞	⅞	⅞	⅞	⅞	⅞	1	"

Binding										
45"/60***	1⅞	1⅞	1⅞	1⅞	1¼	1¼	1¼	1¼	1⅞	Yd

FINISHED GARMENT MEASUREMENTS (Includes Design and Wearing EASE)

A Bust	34	35	36	37½	39½	41½	43½	45½	47½	In
A Hip	35½	36½	37½	39	41	43	45	47	49	"
B Bust	35	36	37	38	39½	41½	43½	45½	47½	"
Finished back length from base of neck										
A	42½	42¾	43	43¼	43½	43¾	44	44¼	44½	In
B	13½	13¾	14	14¼	14½	14¾	15	15¼	15½	"
A Width	35½	36½	37½	39	41	43	45	47	49	"

*without nap **with nap ***with or without nap

JEUNE FEMME: ROBE ET VESTES CLASSIQUES

Tissus: **A,B et C Bordure** en Brocart, Cotonnades, Crêpe, Soie Dupioni, Gabardine, Mélanges de Lin, Piqué, Satinette, Shantung. **C Devant, Dos et Manches** en Dentelle, Organza. Prévoyez davantage de tissu pour raccorder les écossais, rayures ou motifs unidirectionnels.

Mercerie: Fil. **A:** Une glissière de 45cm, 1.20m de ruban de grosgrain de 1.3cm de large, une agrafe. **B:** Trois boutons ou boutons à recouvrir de 3.2cm. Demandez les garnitures de Simplicity Trims

MESURES NORMALISÉES

Poitrine	78	80	83	87	92	97	102	107	112	cm
Taille	58	61	64	67	71	76	81	87	94	"
Hanches (23cm au-dessous de la taille)	83	85	88	92	97	102	107	112	117	cm
Dos (encolure à taille)	39.5	40	40.5	41.5	42	42.5	43	44	44	cm
Tailles Françaises	6	8	10	12	14	16	18	20	22	

A Robe										
115cm**	1.60	1.60	1.70	1.80	2.50	2.60	2.70	2.70	2.80	m
150cm**	1.50	1.60	1.60	1.60	1.60	1.60	1.60	1.60	1.60	"

Entoilage- 0.80m de 51cm à 64cm léger thermocollant tel que Pellon®

B Veste										
115cm**	1.40	1.40	1.40	1.50	1.60	1.60	1.60	1.70	1.70	m
150cm**	1.10	1.20	1.20	1.20	1.30	1.30	1.30	1.30	1.40	"

Doublure										
115cm*	1.00	1.00	1.00	1.00	1.00	1.00	1.00	1.00	1.00	m

Entoilage- 1.30m de 51cm à 64cm léger thermocollant tel que Pellon®

C Veste										
115cm**	0.90	1.00	1.00	1.00	1.00	1.00	1.00	1.00	1.00	m
150cm**	0.60	0.60	0.80	0.80	0.80	0.80	0.80	0.80	0.90	"

Bordure										
115cm / 150cm**	1.00	1.00	1.00	1.10	1.10	1.10	1.10	1.10	1.20	1.20

MESURES DES VÊTEMENTS FINIS

A Poitrine	86.5	89	91.5	95	100.5	103	111	116	121	cm
A Hanches	90	92.5	97	99	104	110	115	120	125	"
B Poitrine	89	91.5	94	96.5	100.5	106	111	116	121	"
Longueur finie du dos depuis la base du cou:										
A	108	109	110	110	111	111	112	112	113	cm
B	34.5	35	35.5	36	37	37.5	38	38.5	39.5	"
A Largeur	90	92.5	95	99	104	110	115	120	125	"

*sans sens **avec sens ***avec ou sans sens *sin pelusa **con pelusa ***sin o con pelusa