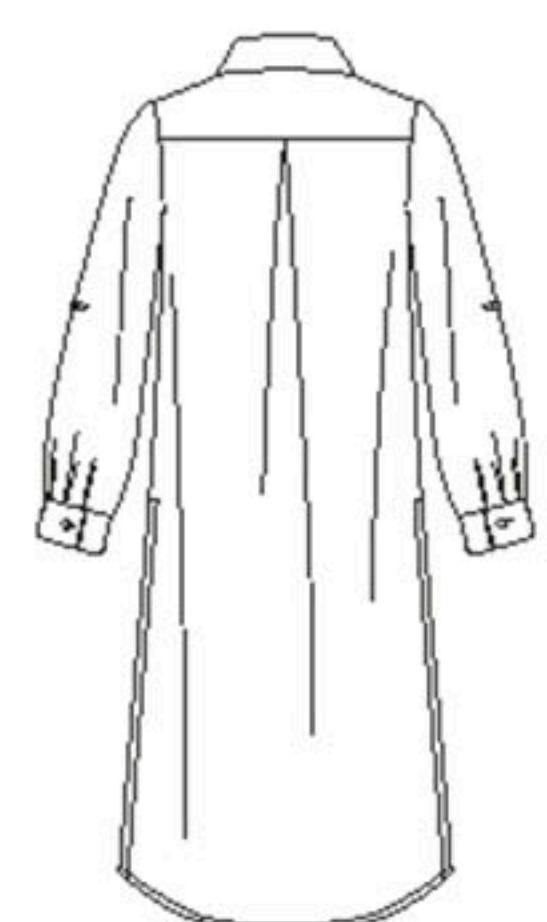
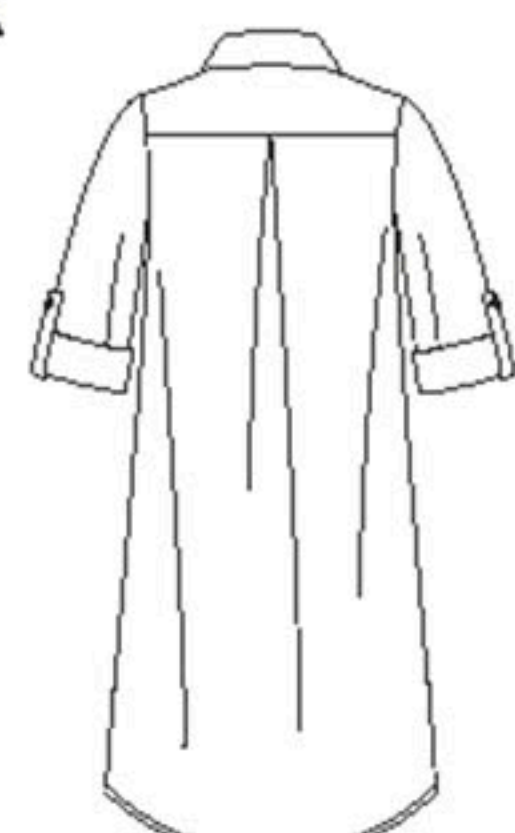


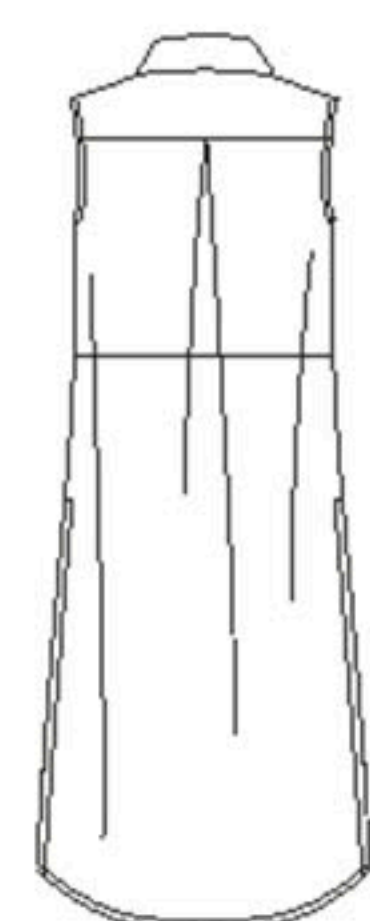
16 PIECES/PIEZAS
Métrages et instructions
de couture en Français à
l'intérieur de l'enveloppe.



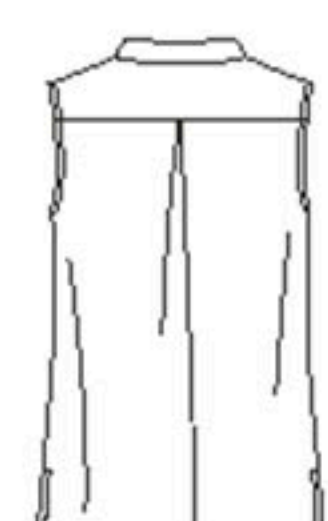
A



B



D



C

MISSES' SEVEN SIZES IN ONE

Sizes	8	10	12	14	16	18	20	
European Size	34	36	38	40	42	44	46	
Bust	31½	32½	34	36	38	40	42	In
Waist	24	25	26½	28	30	32	34	"
Hip	33½	34½	36	38	40	42	44	"
Back-neck to waist	15¾	16	16¼	16½	16¾	17	17¼	In

A,B,C,D Interfacing- ¼ yd. of 20" to 25" lightweight fusible, such as Pellon®

A								
45"***	3⅞	3⅞	3⅞	3⅞	3⅞	3 ¼	3 ¼	Yd
60"***	2⅞	2⅞	2⅞	2½	2½	2⅞	3	"

B								
45"***	2¾	2¾	2¾	2¾	2⅞	2⅞	2⅞	Yd
60"***	1⅞	2	2¼	2⅜	2⅜	2½	2⅝	"

C								
45"***	1⅜	1⅜	1½	1½	1⅝	1⅝	1⅝	Yd
60"***	1⅜	1⅜	1⅜	1⅜	1⅜	1⅜	1½	"

D								
45"***	1	1	1	1⅞	1⅞	1¼	1¼	Yd
60"***	1	1	1	1	1	1⅞	1⅞	"

Contrast Skirt

45"***	1⅞	1⅞	1⅞	1⅞	1⅞	1⅞	1⅞	Yd
60"***	1	1	1	1⅞	1½	1¾	1¾	"

GARMENT MEASUREMENTS

A,B,C,D Bust	37	38	39½	41½	43½	45½	47½	In
Finished back length from base of neck:								
A,D	43¾	44	44¼	44½	44¾	45	45¼	In
B	37¾	38	38¼	38½	38¾	39	39¼	"
C	26¾	27	27¼	27½	27¾	28	28¼	"

SUGGESTED FABRICS

Batiste, Chambray, Charmeuse, Cotton Lawn, Cotton Types, Crepe De Chine, Double Georgette, Gingham, Linen Types, Shirtings, Silky Types. Allow extra fabric for matching plaids or stripes.

REQUIREMENTS

Thread. **A:** Thirteen ½" buttons. **B:** Fifteen ½" buttons. **C,D:** One pkg. of ½" wide single fold bias tape. **C:** Eight ½" buttons. **D:** Nine ½" buttons.

*without nap **with nap ***with or without nap

JEUNE FEMME: PATRON SEPT TAILLES
SEÑORITAS: PATRÓN SIETE TALLAS

Tailles / Tallas	8	10	12	14	16	18	20	
Tailles Françaises	36	38	40	42	44	46	48	
Tallas Europeas	34	36	38	40	42	44	46	
Poitrine / Busto	80	83	87	92	97	102	107	cm
Taille / Cintura	61	64	67	71	76	81	89	"
Hanches / Caderas	85	88	92	97	102	107	112	"
Dos (encolure à Taille) / Espalda (escote a cintura)								
	40	40.5	41.5	42	42.5	43	44	cm

A,B,C,D Entoilage-0.70m de 51cm à 64cm, léger, thermocollant tel que Pellon®
A,B,C,D Entretela-0.70m de 51cm a 64cm, ligera, adhesiva como Pellon®

A	115cm**	2.80	2.80	2.80	2.90	2.90	2.90	2.90	m
	150cm**	1.90	1.90	2.10	2.30	2.30	2.70	2.70	"

B	115cm**	2.50	2.50	2.50	2.60	2.60	2.60	2.60	m
	150cm**	1.80	1.80	2.00	2.20	2.20	2.30	2.40	"

C	115cm**	1.30	1.30	1.40	1.40	1.40	1.40	1.50	m
	150cm**	1.20	1.20	1.20	1.20	1.30	1.30	1.40	"

D	115cm**	0.90	0.90	0.90	1.00	1.00	1.10	1.10	m
	150cm**	0.90	0.90	0.90	0.90	1.00	1.00	1.00	"

Jupe Contrastante / Falda Contrastante

115cm**	1.70	1.70	1.70	1.70	1.70	1.70	1.70	m
150cm**	0.90	0.90	0.90	1.10	1.30	1.50	1.60	"

TISSUS SUGGÉRÉS

Batiste, Chambray, Charmeuse, Linon de Coton, Cotonnades, Crêpe de Chine, Crêpe Georgette Double, Vichy, Toile de Lin, Shirting, Tissus Soyeux. Prévoyez davantage de tissu pour raccorder les écosais ou les rayures.

MERCERIE: Fil. **A:** Treize boutons de 1.3cm. **B:** Quinze boutons de 1.3cm. **C,D:** Un paquet de ruban de biais simple de 1.3cm de large. **C:** Huit boutons de 1.3cm. **D:** Neuf boutons de 1.3cm.

TELAS SUGERIDAS

Batista, Chambray, Charmeuse, Linón de Algodón, Mezclas de Algodones, Crepé de China, Crepé Georgette Doble, Guingán, Tela de Lino, Shirting, Telas Sedosas. Se necesita tela adicional para casar cuadros o rayas.

MERCERÍA: Hilo. **A:** Trece botones de 1.3cm. **B:** Quince botones de 1.3cm. **C,D:** Un paquete de cinta de bias sencillo de 1.3cm de ancho. **C:** Ocho botones de 1.3cm. **D:** Nueve botones de 1.3cm.

*sans sens **avec sens ***avec ou sans sens

*sin pelusa **con pelusa ***con o sin pelusa

6470
SIZE / TAILLE / TALLA
U.S. 8-20
FR. 36-48
EURO. 34-46
A