

M8285

Easy

Facile

MISSES' TOP AND DRESSES

Suggested Fabrics: Cotton Blends, Lawn, Eyelet, Gauze. **Contrast A:** Lace. **Interfacing:** Lightweight Fusible.

Notions: **A:** Six 5/8" (1.5cm) buttons, 7/8 yd. (0.8m) of 3/8" (1cm) wide elastic. **B:** Ten 5/8" (1.5cm) buttons, 7/8 yd. (0.8m) of 3/8" (1cm) wide elastic. **C,D:** Twelve 5/8" (1.5cm) buttons. **Also for C:** 1 yd. (1.0m) of 3/8" (1cm) wide elastic. **Also for D:** One pkg. of 1/2" (1.3cm) wide single fold bias tape.

Sizes	XS (4-6)	S (8-10)	M (12-14)	L (16-18)	XL (20-22)	XXL (24-26)	
European	30-32	34-36	38-40	42-44	46-48	50-52	

BODY MEASUREMENTS: Select pattern size based on body measurements

Bust	29½-30½	31½-32½	34-36	38-40	42-44	46-48	Ins.
Waist	22-23	24-25	26½-28	30-32	34-37	39-41½	"
Hip-9" below waist	31½-32½	33½-34½	36-38	40-42	44-46	48-50	"
Back-neck to waist	15¼-15½	15¾-16	16¼-16½	16¾-17	17¼-17½	17¾-18	"

Top A	45**	2	2½	2½	2¼	2¾	2¾	Yds.
	60**	1½	1½	1½	1½	2½	2½	"

Contrast (Front and Back Yoke)

45**	¾	¾	¾	¾	¾	½	Yd.
------	---	---	---	---	---	---	-----

Interfacing - 20" - 7/8 yd.

Dress B	45**	3¼	3¾	3½	4½	4½	4¼	Yds.
	60**	2½	2½	2½	2¾	3	3	"

Interfacing - 20" - 1¼ yds.

Dress C	45**	5¼	5¼	5¾	5¾	5¾	5¾	Yds.
	60**	4½	4¼	4¼	4¾	4¾	4¾	"

Interfacing C - 20" - 1¾ yds.

Dress D	45**	4¾	4¾	4¾	4¾	4¾	4¾	Yds.
	60**	3½	3¾	3¾	3¾	4	4	"

Interfacing D - 20" - 1¾ yds.

FINISHED GARMENT MEASUREMENTS (Includes Design and Wearing Ease)

A,B,C,D Bust	41	43	46½	50½	54½	58½	Ins.
A,B,C,D Waist	39	41	44½	48½	52½	56½	"

Width, lower edge

Top A	38	42	46	50	54	58	Ins.
Dress B	70	74	78	82	86	90	"

Finished back length from base of neck

Top A	23½	24	24½	25	25½	26	Ins.
Dress B	40½	41	41½	42	42½	43	"
Dress C,D	56½	57	57½	58	58½	59	"

HAUT ET ROBES POUR JEUNES FEMMES

Tissus Conseillés: Cotonnades, Linon, Broderie Anglaise, Gaze. **Contraste A:** Dentelle. **Entoilage:** Thermocollant léger.

Mercerie: **A:** 6 boutons de 1.5cm, 0.8m d'élastique de 1cm de large. **B:** 10 boutons de 1.5cm, 0.8m d'élastique de 1cm de large. **C,D:** 12 boutons de 1.5cm. **Aussi pour C:** 1.0m d'élastique de 1cm de large. **Aussi pour D:** 1 paquet de ruban de biais simple de 2.5cm de large.

Tailles	TP/XP	P	M	G	TG/XG	TTG/XXG	
Françaises	32-34	36-38	40-42	44-46	48-50	52-54	
Européen	30-32	34-36	38-40	42-44	46-48	50-52	

MESURE DU CORPS: Choisissez la taille du patron basée sur les mesures du corps

Poitrine 75-77 80-83 87-92 97-102 107-112 117-122 cm

Taille 56-58 61-64 67-71 76-81 87-94 99-105 "

Hanches (23cm au-dessous de la taille)

80-83 85-88 92-97 102-107 112-117 122-127 cm

Dos du cou à la taille 39-39.5 40-40.5 41.5-42 42.5-43 44-44.5 45-45.5 "

Haut A 115cm* 1.9 2.0 2.0 2.0 2.1 2.2 m

150cm* 1.4 1.4 1.4 1.5 2.0 2.0 "

Contraste (Empiècement devant et dos) - 115, 150cm* - 0.4m.

Entoilage - 51cm - 0.8m.

Robe B 115cm* 3.0 3.1 3.2 3.8 3.8 3.8 m

150cm* 2.2 2.3 2.4 2.6 2.7 2.8 "

Entoilage - 51cm - 1.2m.

Robe C 115cm* 4.8 4.8 4.8 5.3 5.3 5.4 m

150cm* 3.8 3.8 3.9 4.0 4.3 4.3 "

Entoilage - 51cm - 1.5m.

Robe D 115cm* 4.2 4.3 4.3 4.5 4.5 4.5 m

150cm* 3.2 3.5 3.5 3.6 3.7 3.7 "

Entoilage - 51cm - 1.5m.

MESURES DES VÊTEMENTS FINI (Motif et aisance de port compris)

A,B,C,D Poitrine 104 109 118 128 138 148 cm

A,B,C,D Taille 99 104 113 123 133 143 "

Largeur à l'ourlet

Haut A 96.5 107 117 127 138 148 cm

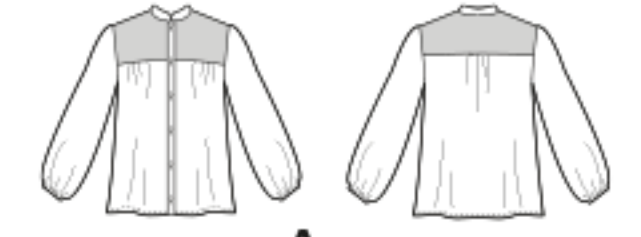
Robe B 178 188 199 209 219 229 "

Longueur finie - dos, votre nuque à l'ourlet

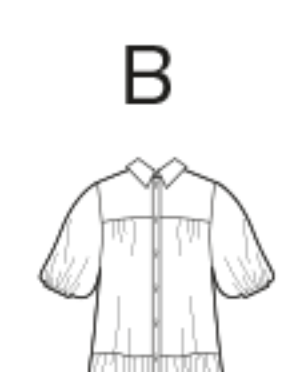
Haut A 59.5 61 62 63.5 65 66 cm

Robe B 103 104 106 107 108 110 "

Robe C,D 144 145 146 148 149 150 "



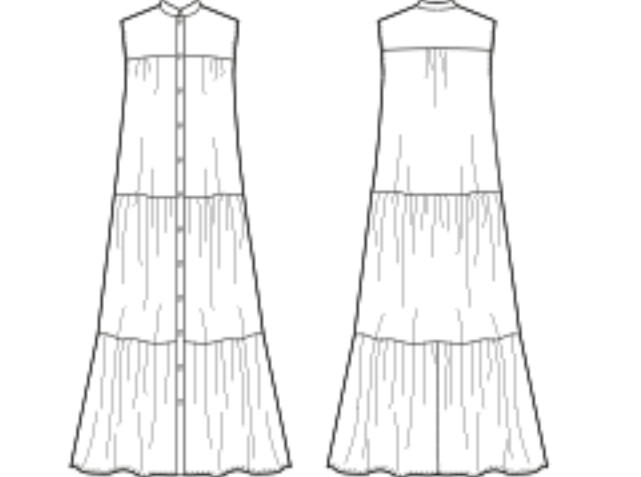
A



B



C



D