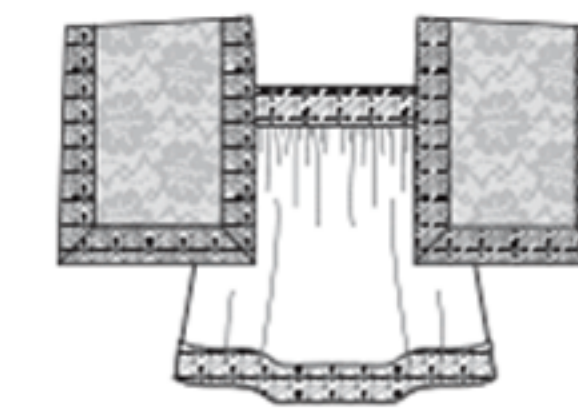
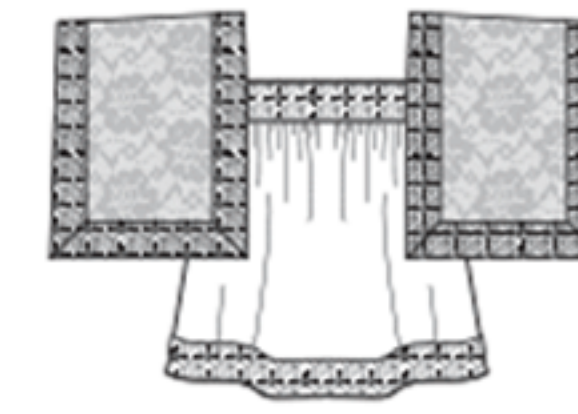


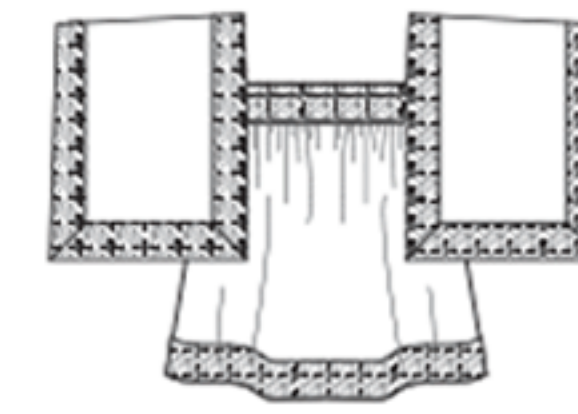
# M8257

18 PIECES

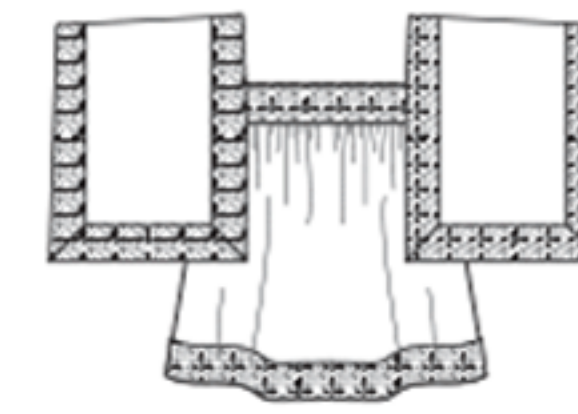
Easy  
Facile



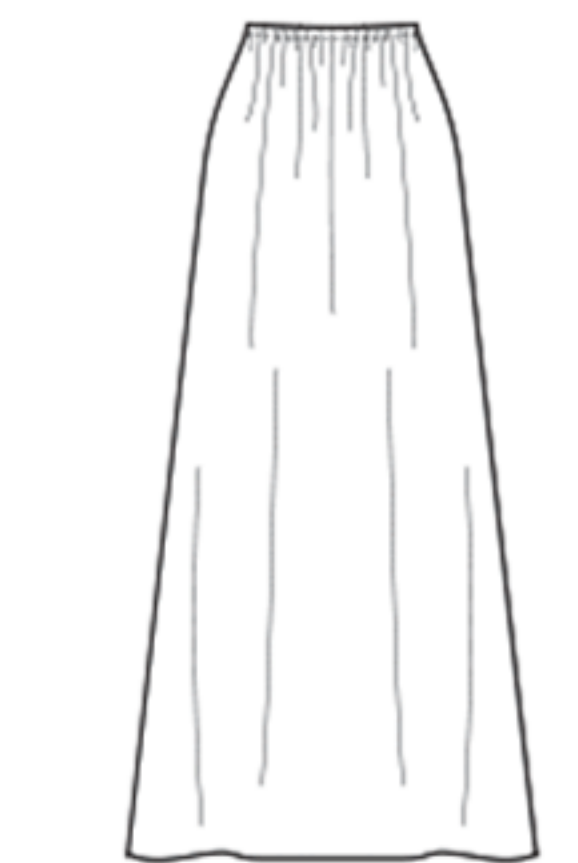
A



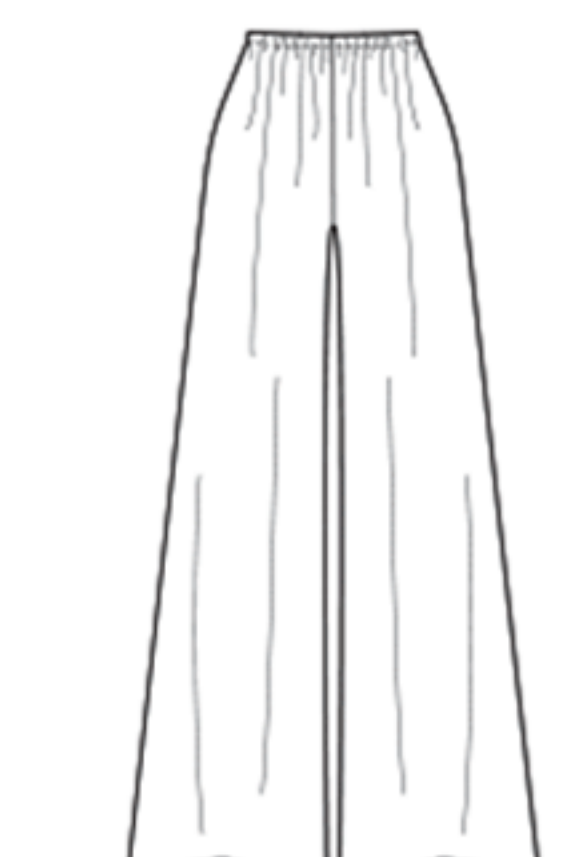
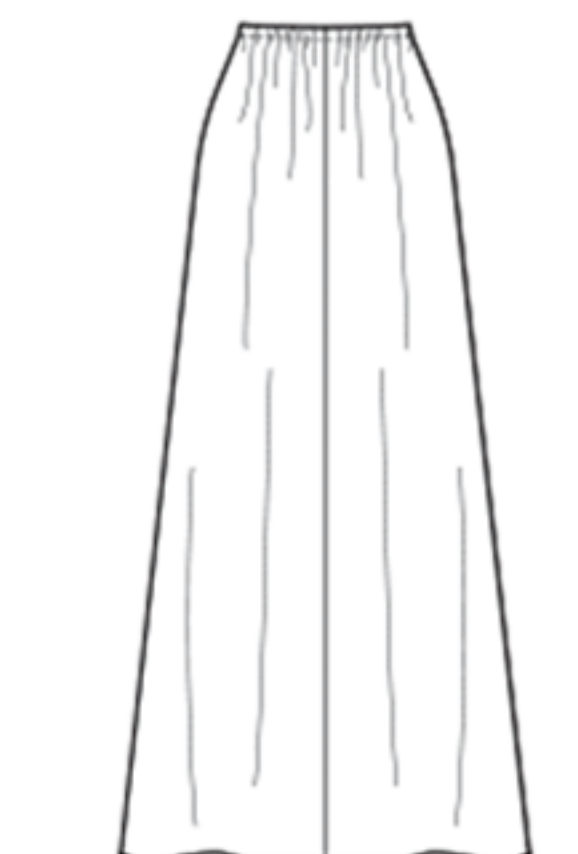
B



C



D



E

## MISSES' TOPS, SKIRT AND PANTS

**Suggested Fabrics:** Lawn, Lightweight Cotton Blends, Challis, Crepe. **Contrast A,B:** Lace.

**Notions:** A,B: 6 $\frac{5}{8}$  yds. (6.10m) of 2" (5cm) Wide Flat Lace. D,E: 1 $\frac{1}{2}$  yds. (1.4m) of  $\frac{3}{4}$ " (2cm) Wide Elastic.

Sizes	XS (4-6)	S (8-10)	M (12-14)	L (16-18)	XL (20-22)	XXL (24-26)	
-------	-------------	-------------	--------------	--------------	---------------	----------------	--

**Top A** - 45" to 60"\* - 1 $\frac{1}{8}$  yds.; **Contrast A** - 45" to 60"\* - 1 $\frac{1}{8}$  yds.

Top B							
45"*	1 $\frac{5}{8}$	1 $\frac{3}{4}$	1 $\frac{3}{4}$	1 $\frac{7}{8}$	2	2	Yds.
60"*	1	1	1	1 $\frac{1}{4}$	1 $\frac{3}{8}$	1 $\frac{3}{8}$	"

Top C							
45"*	2 $\frac{1}{8}$	2 $\frac{1}{4}$	2 $\frac{3}{8}$	2 $\frac{1}{2}$	2 $\frac{3}{4}$	2 $\frac{3}{4}$	Yds.
60"*	1 $\frac{1}{2}$	1 $\frac{5}{8}$	1 $\frac{3}{4}$	1 $\frac{7}{8}$	2 $\frac{1}{4}$	2 $\frac{3}{8}$	"

Skirt D							
45"*	3 $\frac{7}{8}$	4 $\frac{1}{4}$	5	5 $\frac{3}{8}$	5 $\frac{3}{8}$	5 $\frac{3}{8}$	Yds.
60"*	2 $\frac{3}{4}$	2 $\frac{3}{4}$	2 $\frac{3}{4}$	2 $\frac{3}{4}$	2 $\frac{3}{4}$	2 $\frac{3}{4}$	"

**Pants E** - 45" to 60"\* - 2 $\frac{7}{8}$  yds.

## FINISHED GARMENT MEASUREMENTS

<b>Skirt D Width</b>	82	84	86	89 $\frac{1}{2}$	93 $\frac{1}{2}$	97 $\frac{1}{2}$	Ins.
<b>Pants E Leg Width</b>	25 $\frac{1}{2}$	26 $\frac{1}{2}$	27 $\frac{1}{2}$	28 $\frac{1}{2}$	29 $\frac{1}{2}$	30 $\frac{1}{2}$	"
<b>Back length from waist:</b>							
<b>Skirt D</b>	42	42	42	42	42	42	Ins.
<b>Side length from waist:</b>							
<b>Pants E</b>	44	44	44	44	44	44	Ins.

## HAUTS, JUPE ET PANTALON POUR JEUNES FEMMES

**Tissus Conseillés:** Linon, Cotonnades de poids léger, Challis, Crepe. **Contraste A,B:** Dentelle.

**Mercerie:** A,B: 6.1m de dentelle plate de 5cm de large. D,E: 1.4m d'élastique de 2cm de large.

Tailles	TP/XP	P	M	G	TG/XG	TTG/XXG	
<b>Françaises</b>	32-34	36-38	40-42	44-46	48-50	52-54	
<b>Européen</b>	30-32	34-36	38-40	42-44	46-48	50-52	

**Haut A** - 115cm à 150cm\*\* - 1.1m; **Contraste A** - 115cm à 150cm\*\* - 1.1m.

Haut B							
115cm*	1.5	1.6	1.6	1.8	1.9	1.9	m
150cm*	0.8	1.0	1.0	1.2	1.3	1.3	"

Haut C							
115cm*	2.0	2.1	2.2	2.3	2.4	2.6	m
150cm*	1.4	1.5	1.6	1.8	2.1	2.2	"

Jupe D							
115cm*	3.6	3.9	4.6	5.0	5.0	5.0	m
150cm*	2.6	2.6	2.6	2.6	2.6	2.6	"

**Pantalon E** - 115cm à 150cm\* - 2.6m.

## MESURES DES VÊTEMENTS FINI

<b>Jupe D Largeur</b>	209	214	219	227	237	248	cm
<b>Largeur, chaque jambe</b>							
<b>Pantalon E</b>	65	67.5	70	72.5	75	77.5	cm
<b>Longueur- dos, taille à l'ourlet</b>							
<b>Jupe D</b>	107	107	107	107	107	107	cm
<b>Longueur- côté, taille à l'ourlet</b>							
<b>Pantalon E</b>	112	112	112	112	112	112	cm

\*with nap \*\*without nap \*\*\*with or without nap

\*avec sens \*\*sans sens \*\*\*avec ou sans sens