

M8249

17 PIECES/PIEZAS

Easy
Facile
Fácil

UNISEX TOPS AND PANTS

Suggested Fabrics: 35% Moderate Stretch Knits - Sweatshirt Fleece, Fleece, Minky Fleece, French Terry.

Notions: **B:** 2 yds. (1.9m) of ½" (1.3cm) Twill Tape and Two Eyelets. **C:** 1¾ yds. (1.6m) of 1¼" (3.2cm) Elastic.

Sizes	S	M	L	XL	XXL	XXXL	
Top A							
60"*	1⅜	1⅜	1⅜	1⅜	1½	1½	Yds.
Contrast 1A							
60"*	½	½	½	½	½	⅝	Yd.
Contrast 2A							
60"*	½	½	½	½	⅞	⅞	Yd.
Top B							
60"*	1⅝	1⅝	1⅞	2	2	2⅛	Yds.
Contrast B							
60"*	½	½	½	½	⅞	⅞	Yd.
Pants C							
60"*	1⅝	1⅝	1¾	1⅞	2⅛	2¼	Yds.

FINISHED GARMENT MEASUREMENTS

Pants C Hip	42	46	50	54	58	62	Ins.
Back length from base of neck:							
Top A,B	31	31½	32	32½	33	33½	Ins.
Side length from waist:							
Pants C	39	39	39	39	39	39	Ins.

HAUTS ET PANTALON POUR UNISEXE / TOPS Y PANTALÓN PARA UNISEX

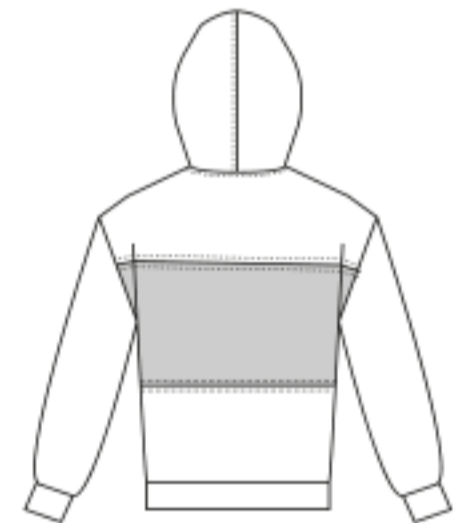
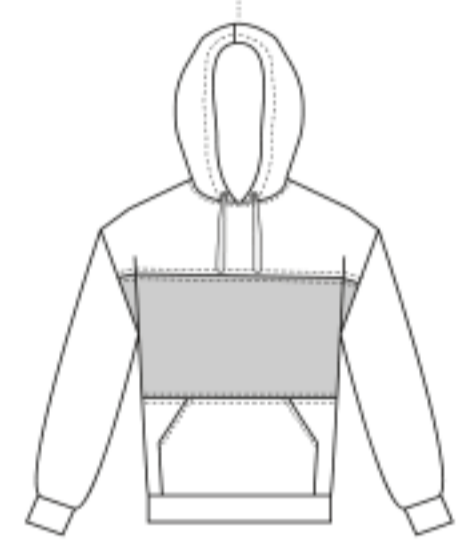
Tailles/ Tallas	P	M	G	TG/XG	TTG/XXG	TTTG/XXXG	
Françaises	36-38	40-42	44-46	48-50	52-54	56-58	
Europeas	34-36	38-40	42-44	46-48	50-52	54-56	
Haut A/ Top A							
150cm*	1.3	1.3	1.3	1.3	1.3	1.4	m
Contraste 1A							
150cm*	0.5	0.5	0.5	0.5	0.5	0.6	m
Contraste 2A							
150cm*	0.5	0.5	0.5	0.5	0.8	0.8	m
Haut B/ Top B							
150cm*	1.5	1.5	1.8	1.9	1.9	2.0	m
Contraste B							
150cm*	0.5	0.5	0.5	0.5	0.8	0.8	m
Pantalón C/ Pantalón C							
150cm*	1.4	1.5	1.6	1.8	2.0	2.1	m

*with nap **without nap ***with or without nap
*con pelusa **sin pelusa ***con o sin pelusa

*avec sens **sans sens ***avec ou sans sens



A



B



C

4" of crosswise folded knit must **STRETCH** from here
10 cm de tricot plié sur le travers doivent s'étirer d'ici
10 cm de tejido de punto doblado al través deben estirarse desde acá

To Here (35%)
jusqu'ici (35%)
hasta acá (35%)