

# M8239

18 PIECES/PIEZAS

Average  
Moins Facile  
Intermedio

## MISSES' DRESSES WITH A/B, C, D CUP SIZES

Suggested Fabrics: Crepes, Challis, Cotton Blends, Stable Knits.

Notions: One 18" (45cm) Invisible Zipper, One Hook and Eye.

Sizes	6	8	10	12	14	16	18	20	22	24	
<b>Dress A</b>											
60"***	2	2 1/8	2 1/8	2 1/8	2 1/8	2 1/4	2 3/8	2 3/8	2 3/8	2 3/8	Yds.
<b>Contrast A (Collar)</b>											
45, 60"***	1/2	1/2	1/2	1/2	1/2	1/2	1/2	1/2	1/2	1/2	Yd.
<b>Fusible Interfacing A</b>											
20" **	3/4	3/4	7/8	7/8	7/8	7/8	7/8	7/8	7/8	7/8	Yd.
<b>Dress B</b>											
60"***	1 7/8	1 7/8	1 7/8	2	2	2 3/8	2 3/8	2 3/8	2 1/2	2 1/2	Yds.
<b>Contrast B (Collar)</b>											
45, 60"***	1/2	1/2	1/2	1/2	1/2	1/2	1/2	1/2	1/2	1/2	Yd.
<b>Fusible Interfacing B</b>											
20" **	5/8	5/8	3/4	3/4	3/4	3/4	3/4	3/4	3/4	3/4	Yd.
<b>Dress C</b>											
60"***	2 3/8	2 3/8	2 3/8	2 1/2	2 1/2	2 3/4	2 7/8	2 7/8	2 7/8	3	Yds.
<b>Fusible Interfacing C</b>											
20" **	3/4	3/4	3/4	3/4	3/4	3/4	3/4	3/4	3/4	7/8	Yd.

## FINISHED GARMENT MEASUREMENTS

### Measurement at bustline

A/B Cup	34 1/2	35 1/2	36 1/2	38	40	42	44	46	48	50	Ins.
C Cup	35 1/2	36 1/2	37 1/2	39	41	43	45	47	49	51	"
D Cup	36 1/2	37 1/2	38 1/2	40	42	44	46	48	50	52	"
Dress A, B, C Hip	42 1/2	43 1/2	44 1/2	46	48	50	52	54	56	58	"
Dress A Width	63	64	65	66 1/2	68 1/2	70 1/2	72 1/2	74 1/2	76 1/2	78 1/2	"
Dress B, C Width	70 1/2	71 1/2	72 1/2	74	76	78	80	82	84	86	"

### Back length from base of neck:

Dress A	35 1/2	35 3/4	36	36 1/4	36 1/2	36 3/4	37	37 1/4	37 1/2	37 3/4	Ins.
Dress B, C	37 1/2	37 3/4	38	38 1/4	38 1/2	38 3/4	39	39 1/4	39 1/2	39 3/4	"

## ROBES AVEC TAILLES DE TASSE A/B, C, D POUR JEUNES FEMMES

## VESTIDOS CON TALLAS DE COPA A/B, C, D PARA SEÑORITAS

Tailles/Tallas	6	8	10	12	14	16	18	20	22	24	
<b>Robe A/ Vestido A</b>											
150cm***	1.9	1.9	2.0	2.0	2.0	2.1	2.1	2.2	2.2	2.2	m
<b>Contraste A (Col)/ Contraste A (Cuello)</b>											
115, 150cm***	0.5	0.5	0.5	0.5	0.5	0.5	0.5	0.5	0.5	0.5	m
<b>Entoilage Thermocollant A/ Entretela Termoadhesiva A</b>											
51cm**	0.7	0.7	0.7	0.8	0.8	0.8	0.8	0.8	0.8	0.8	m
<b>Robe B/ Vestido B</b>											
150cm***	1.8	1.8	1.8	1.9	1.9	2.2	2.2	2.2	2.3	2.3	m
<b>Contraste B (Col)/ Contraste B (Cuello)</b>											
115, 150cm***	0.5	0.5	0.5	0.5	0.5	0.5	0.5	0.5	0.5	0.5	m
<b>Entoilage Thermocollant B/ Entretela Termoadhesiva B</b>											
51cm**	0.6	0.6	0.6	0.7	0.7	0.7	0.7	0.7	0.7	0.7	m
<b>Robe C/ Vestido C</b>											
150cm***	2.2	2.2	2.2	2.3	2.3	2.6	2.7	2.7	2.7	2.8	m
<b>Entoilage Thermocollant C/ Entretela Termoadhesiva C</b>											
51cm**	0.7	0.7	0.7	0.7	0.7	0.7	0.7	0.7	0.7	0.7	m

\*with nap \*\*without nap \*\*\*with or without nap  
\*con pelusa \*\*sin pelusa \*\*\*con o sin pelusa

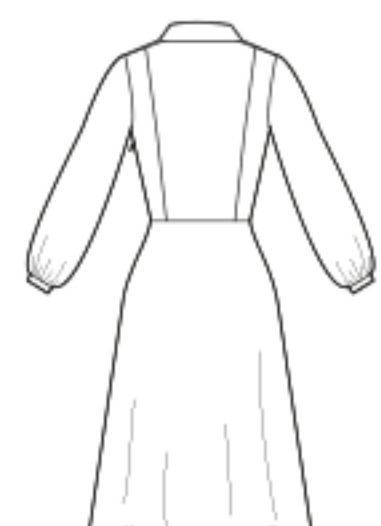
\*avec sens \*\*sans sens \*\*\*avec ou sans sens



A



B



C

4" of crosswise folded knit must **STRETCH** from here  
10 cm de tricot plié sur le travers doivent s'étirer d'ici  
10 cm de tejido de punto doblado al través deben estirarse desde acá

To Here (35%)  
jusqu'ici (35%)  
hasta acá (35%)