

M8230

16 PIECES/PIEZAS

Average
Moins Facile
Intermedio

MISSES' JACKET DRESS

Suggested Fabrics: Sat in/Sateen, Silk, Velvet, Wool, Lt. Wt. Synthetic Leather. Also for **Contrast A:** Satin/Sateen, Silk.

Notions: ½" (1.3cm) Shoulder Pads (Optional), Two 1" (2.5cm) Buttons, Two Waistband Hook and Eye Closures.

Sizes	6	8	10	12	14	16	18	20	22	
Jacket Dress A										
45"***	2⅝	2⅝	2⅝	2⅝	2¾	2¾	2¾	3⅞	3¼	Yds.
60"***	1⅞	2	2	2	2	2	2⅞	2⅝	2⅝	"
Contrast A (Collar, Front Facing, Cuffs)										
45"***	1⅞	1⅞	1⅞	1⅞	1⅞	1⅞	1⅞	1¼	1¼	Yds.
Lining A										
45"***	1⅞	1⅞	1⅞	1⅞	1⅞	2⅝	2⅝	2⅝	2¾	Yds.
60"***	1⅝	1⅝	1⅝	1⅝	1⅞	1⅞	1⅞	1⅞	2	"
Sew-In Interfacing A										
20"***	2	2	2	2	2⅞	2⅞	2⅞	2¼	2⅞	Yds.
Jacket Dress B										
45"***	3	3	3	3⅞	3⅞	3¼	3⅞	3⅞	3⅞	Yds.
60"***	2¼	2¼	2¼	2¼	2⅞	2⅞	2⅞	2⅞	3	"
Lining B										
45"***	1⅞	2	2	2	2⅞	2⅝	2⅝	2⅝	2¾	Yds.
60"***	1⅞	1⅞	1⅞	1⅞	1⅞	1⅞	1⅞	1⅞	2	"
Sew-In Interfacing B										
20"***	1¾	1¾	1¾	1¾	1¾	1⅞	2	2	2⅞	Yds.

FINISHED GARMENT MEASUREMENTS

Measurement at bustline

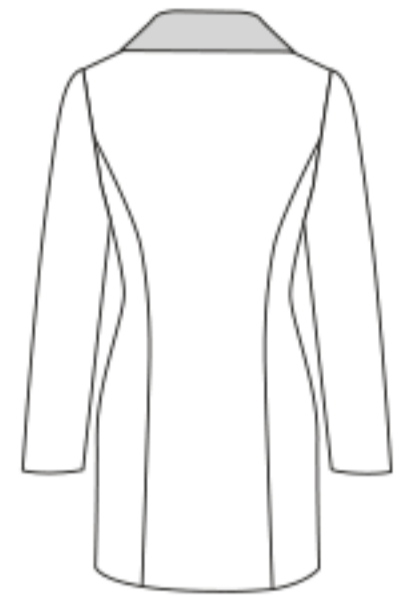
A/B Cup	35½	36½	37½	39	41	43	45	47	49	Ins.
C Cup	36½	37½	38½	40	42	44	46	48	50	"
D Cup	37½	38½	39½	41	43	45	47	49	51	"
Jacket Dress A, B Hip	37	38	39	40½	42½	44½	46½	48½	50½	"
Jacket Dress A, B Width	45½	46½	47½	49	51	53	55	57	59	"

Back length from base of neck:

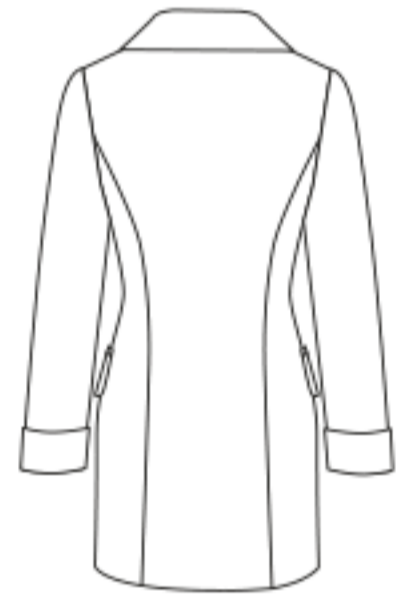
Jacket Dress A, B	31½	31¾	32	32¼	32½	32¾	33	33¼	33½	Ins.
-------------------	-----	-----	----	-----	-----	-----	----	-----	-----	------

ROBE VESTE POUR JEUNES FEMMES / VESTIDO DE CHAQUETA PARA SEÑORITAS

Tailles/ Tallas	6	8	10	12	14	16	18	20	22	
Françaises	34	36	38	40	42	44	46	48	50	
Europeas	32	34	36	38	40	42	44	46	48	
Robe Veste A/ Vestido de Chaqueta A										
115cm***	2.4	2.4	2.4	2.4	2.4	2.6	2.6	2.9	2.9	m
150cm***	1.8	1.8	1.9	1.9	1.9	1.9	1.9	2.4	2.4	"
Contraste A (Col, Parementure du Devant, Poignets)/ Contraste A (Cuello, Vista del Frente, Puños)										
115cm***	1.1	1.1	1.1	1.1	1.1	1.1	1.1	1.1	1.2	m
Doublure A/ Forro A										
115cm**	1.8	1.8	1.8	1.8	1.8	2.4	2.4	2.4	2.4	m
150cm**	1.5	1.5	1.5	1.5	1.8	1.8	1.8	1.8	1.8	"
Entoilage à Coudre A/ Entretela para Coser A										
51cm**	1.9	1.9	1.9	1.9	2.0	2.0	2.0	2.1	2.2	m
Robe Veste B/ Vestido de Chaqueta B										
115cm***	2.8	2.8	2.8	2.9	2.9	3.0	3.1	3.6	3.6	m
150cm***	2.1	2.1	2.1	2.1	2.7	2.7	2.7	2.7	2.8	"
Doublure B/ Forro B										
115cm**	1.8	1.9	1.9	1.9	2.0	2.4	2.4	2.4	2.6	m
150cm**	1.8	1.8	1.8	1.8	1.8	1.8	1.8	1.8	1.8	"
Entoilage à Coudre B/ Entretela para Coser B										
51cm**	1.6	1.6	1.6	1.6	1.6	1.8	1.9	1.9	2.0	m



A



B



A, B

*with nap **without nap ***with or without nap
*con pelusa **sin pelusa ***con o sin pelusa

*avec sens **sans sens ***avec ou sans sens