

M8227

18 PIECES

Easy
Facile

GIRLS' AND BOYS' COSTUME COATS WITH MASK

Suggested Fabrics: A,B,C,D: Twill, Denim, Wool/Gabardine, Faux Suede, Synthetic Leather. E: Cotton/Cotton Blends. Unsuitable for obvious diagonals.

Notions: A,B,C,D: 7/8" (2.2cm) Buttons: five for A,C, Eight for B and Eighteen for D. E: 1/2 yd. (0.5m) of 1/8" - 1/4" (3mm - 6mm) Elastic.

Sizes		7	8	10	12	14	
Coat A	45"***	25/8	25/8	27/8	3 1/2	3 5/8	Yds.
	60"***	2	2 1/8	2 3/8	2 5/8	2 3/4	"
Sew-In Interfacing A							
	20"***	1 1/4	1 1/4	1 3/8	1 1/2	1 5/8	Yds.
Coat B	45"***	3 3/8	3 1/2	3 7/8	4 1/4	4 3/8	Yds.
	60"***	2 5/8	2 5/8	2 7/8	3 1/8	3 3/8	"
Sew-In Interfacing B							
	20"***	1 3/8	1 1/2	1 1/2	1 5/8	1 3/4	Yds.
Coat C	45"***	2 1/4	2 1/4	2 1/2	2 5/8	2 3/4	Yds.
	60"***	1 5/8	1 5/8	1 3/4	1 7/8	2	"
Sew-In Interfacing C							
	20"***	1	1 1/8	1 1/8	1 1/8	1 1/4	Yds.
Coat D	45"***	2 1/4	2 1/4	2 1/2	2 5/8	2 3/4	Yds.
	60"***	1 5/8	1 3/4	1 7/8	2	2 1/8	"
Sew-In Interfacing D							
	20"***	1	1	1 1/8	1 1/8	1 1/4	Yds.

Mask E (Front and Scarf)- 45"*** - 7/8 yd.; **Fusible Interfacing E-** 20"*** - 3/8 yd.

FINISHED GARMENT MEASUREMENTS

Coat A,B,C,D Chest	31 1/2	32 1/2	34	35 1/2	37 1/2	Ins.
Coat A,B,C,D Hip	36	37	39	41	43	"
Coat A,B Width	50 1/2	51 1/2	53 1/2	55 1/2	57 1/2	"
Coat C,D Width	43	44	46	48	50	"
Back length from base of neck:						
Coat A,B	41 1/2	41 1/2	41 1/2	41 1/2	41 1/2	Ins.
Coat C,D	30 1/2	30 1/2	30 1/2	30 1/2	30 1/2	"

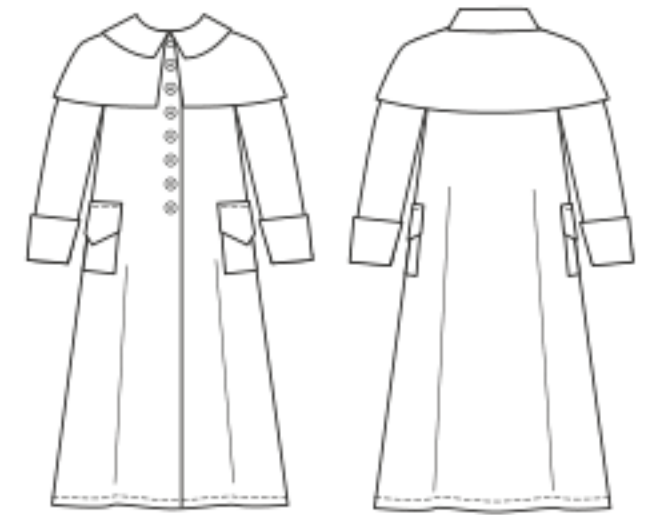
MANTEAUX AVEC MASQUE DE DÉGUISEMENT POUR JEUNES FILLES ET GARÇONS

Tailles		7	8	10	12	14	
Manteau A	115cm***	2.3	2.4	2.7	3.2	3.2	m
	150cm***	1.9	2.0	2.1	2.4	2.6	"
Entoilage à Coudre A							
	51cm**	1.2	1.2	1.3	1.4	1.4	m
Manteau B	115cm***	3.1	3.2	3.6	3.8	4.0	m
	150cm***	2.4	2.4	2.7	2.9	3.1	"
Entoilage à Coudre B							
	51cm**	1.3	1.4	1.4	1.5	1.6	m
Manteau C	115cm***	2.1	2.1	2.2	2.3	2.4	m
	150cm***	1.5	1.5	1.6	1.6	1.9	"
Entoilage à Coudre C							
	51cm**	1.0	1.0	1.1	1.1	1.2	m
Manteau D	115cm***	2.1	2.1	2.3	2.4	2.6	m
	150cm***	1.5	1.6	1.8	1.8	2.0	"
Entoilage à Coudre D							
	51cm**	1.0	1.0	1.1	1.1	1.2	m

Masque E (Devant et Écharpe)- 115cm*** - 0.8m; **Entoilage Thermocollant E-** 51cm** - 0.4m.



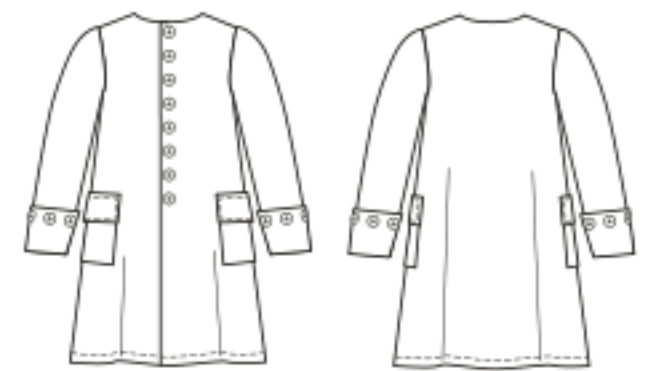
A



B



C



D



E

*with nap **without nap *** with or without nap

*avec sens **sans sens ***avec ou sans sens