

M8178

12 PIECES/PIEZAS

Easy
Facile
Fácil

MISSES' DRESSES AND BELT

Suggested Fabrics: Cotton Blends, Lawn, Challis, Stable Knits.

Notions: 3/8" Elastic: 1 1/2 yds. (1.4m) for A and 2 1/8 yds. (2.0m) for B,C.

Sizes	6	8	10	12	14	16	18	20	22	24
-------	---	---	----	----	----	----	----	----	----	----

Dress And Belt A

45"***	3 3/8	3 3/8	3 3/8	3 3/8	3 1/2	3 1/2	3 3/4	3 3/4	3 7/8	3 7/8	Yd
60"***	2 3/8	2 1/2	2 1/2	2 1/2	2 1/2	2 3/4	2 3/4	2 3/4	2 3/4	2 3/4	"

Fusible Interfacing A

20"	5/8	3/4	3/4	3/4	3/4	3/4	3/4	3/4	3/4	3/4	Yd
-----	-----	-----	-----	-----	-----	-----	-----	-----	-----	-----	----

Dress B

45"***	3 3/4	3 7/8	3 7/8	3 7/8	4	4	4 1/4	4 1/4	4 1/4	4 3/8	Yd
60"***	2 3/4	2 3/4	2 3/4	2 7/8	3	3 1/8	3 1/8	3 1/8	3 1/8	3 1/4	"

Dress C

45"***	2 5/8	2 5/8	2 5/8	2 5/8	2 5/8	3 1/8	3 1/8	3 1/8	3 1/4	3 1/4	Yd
60"***	2	2	2	2	2	2 1/8	2 1/2	2 1/2	2 1/2	2 5/8	"

Contrast C

45"***	1 3/8	1 3/8	1 3/8	1 3/8	1 3/8	1 3/8	1 3/8	1 3/8	1 3/8	1 3/8	Yd
60"***	1 1/8	1 1/8	1 1/8	1 1/8	1 1/8	1 1/8	1 1/8	1 1/8	1 1/8	1 1/8	"

Fusible Interfacing B,C

20"	3/8	3/8	3/8	3/8	3/8	1/2	1/2	1/2	1/2	1/2	Yd
-----	-----	-----	-----	-----	-----	-----	-----	-----	-----	-----	----

FINISHED GARMENT MEASUREMENTS

Measurement at bustline

Dress A,B,C	36 1/2	37 1/2	38 1/2	40	42	44	46	48	50	52	In
-------------	--------	--------	--------	----	----	----	----	----	----	----	----

Backlength from base of neck:

Dress A,B,C	35 1/2	35 3/4	36	36 1/4	36 1/2	36 3/4	37	37 1/4	37 1/2	37 3/4	In
-------------	--------	--------	----	--------	--------	--------	----	--------	--------	--------	----

ROBES ET CEINTURE POUR JEUNES FEMMES/ VESTIDOS Y CINTURÓN PARA SEÑORITAS

Tailles/ Tallas	6	8	10	12	14	16	18	20	22	24
Françaises	34	36	38	40	42	44	46	48	50	52
Europeas	32	34	36	38	40	42	44	46	48	50

Robe et Ceinture A/ Vestido y Cinturón A

115cm***	3.1	3.1	3.1	3.1	3.2	3.2	3.5	3.5	3.6	3.6	m
150cm***	2.2	2.3	2.3	2.3	2.3	2.6	2.6	2.6	2.6	2.6	"

Entoilage Thermocollant A/ Entretela Termoadhesiva A

51cm	0.6	0.7	0.7	0.7	0.7	0.7	0.7	0.7	0.7	0.7	m
------	-----	-----	-----	-----	-----	-----	-----	-----	-----	-----	---

Robe B/ Vestido B

115cm***	3.5	3.6	3.6	3.6	3.7	3.7	3.9	3.9	3.9	4.0	m
150cm***	2.6	2.6	2.6	2.7	2.8	2.9	2.9	2.9	2.9	3.0	"

Robe C/ Vestido C

115cm***	2.4	2.4	2.4	2.4	2.4	2.9	2.9	2.9	3.0	3.0	m
150cm***	1.9	1.9	1.9	1.9	1.9	2.0	2.3	2.3	2.3	2.4	"

Contraste C

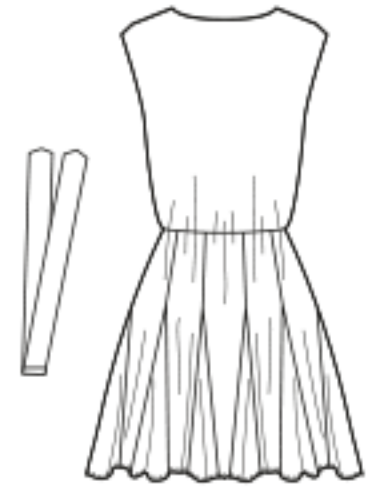
115cm***	1.3	1.3	1.3	1.3	1.3	1.3	1.3	1.3	1.3	1.3	m
150cm***	1.1	1.1	1.1	1.1	1.1	1.1	1.1	1.1	1.1	1.1	"

Entoilage Thermocollant B,C/ Entretela Termoadhesiva B,C

51cm	0.4	0.4	0.4	0.4	0.4	0.5	0.5	0.5	0.5	0.5	m
------	-----	-----	-----	-----	-----	-----	-----	-----	-----	-----	---

*with nap **without nap ***with or without nap
*con pelusa **sin pelusa ***con o sin pelusa

*avec sens **sans sens ***avec ou sans sens



A



B



C