

M8133

19 PIECES/PIEZAS

MEN'S VESTS

Suggested Fabrics: Gabardine, Wool, Wool Blends, Men's Suiting Fabrics. **Lining:** Lining Fabric. **Interfacing:** Sew-In. Unsuitable for obvious diagonals.

Notions: All Views: One Sliding Buckle. **A,B:** Four ¾" (2.0cm) Buttons. **C:** Nine ¾" (2.0cm) Buttons, One Snap Set (Optional). **D:** Three ¾" (2.0cm) Buttons. **E,F:** Seven ¾" (2.0cm) Buttons.

Sizes S M L XL XXL XXXL

Vest A

45, 60^{**/**} - 1 yd.

Vest B

45 ^{**/**}	7/8	7/8	1 1/8	1 1/8	1 1/8	1 1/4	Yd
60 ^{**/**}	7/8	7/8	7/8	7/8	1	1	"

Vest C

45, 60^{**/**} - 1 1/8 yds.

Vest D, E

45, 60^{**/**} - 1 yd.

Contrast D- 45, 60^{**/**} - 7/8 yd.

Vest F

45 ^{**/**}	1 5/8	1 5/8	1 5/8	1 5/8	1 5/8	1 5/8	Yd
60 ^{**/**}	1	1	1	1	1 1/8	1 1/4	"

Note: See Instruction Sheets For Lining and Interfacing Information.

FINISHED GARMENT MEASUREMENTS

A,B,C,D,E,F Chest

37	41	45	49	53	57	In
----	----	----	----	----	----	----

A,B,C,D,E,F Width

34	38	42	46	50	54	In
----	----	----	----	----	----	----

Backlength from base of neck:

A,B,C,D,E,F	21 1/2	22	22 1/2	23	23 1/2	24	In
-------------	--------	----	--------	----	--------	----	----

GILETS POUR HOMMES/ CHALECOS PARA HOMBRES

Tailles/Tallas	P	M	G	TG/XG	TTG/XXG	TTTG/XXXG
Françaises	36-38	40-42	44-46	48-50	52-54	56-58
Europeas	34-36	38-40	42-44	46-48	50-52	54-56

Gilet A/ Chaleco A

115, 150cm^{**/**} - 1.0m.

Gilet B/ Chaleco B

115cm ^{**/**}	0.8	0.8	1.1	1.1	1.1	1.2	m
150cm ^{**/**}	0.8	0.8	0.8	0.8	1.0	1.0	"

Gilet C/ Chaleco C

115, 150cm^{**/**} - 1.1m.

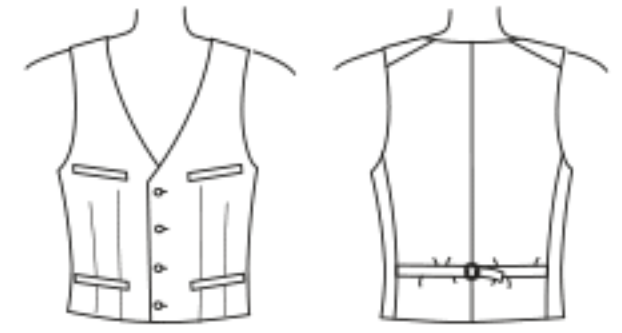
Gilet D,E/ Chaleco D,E

115, 150cm^{**/**} - 1.0m.

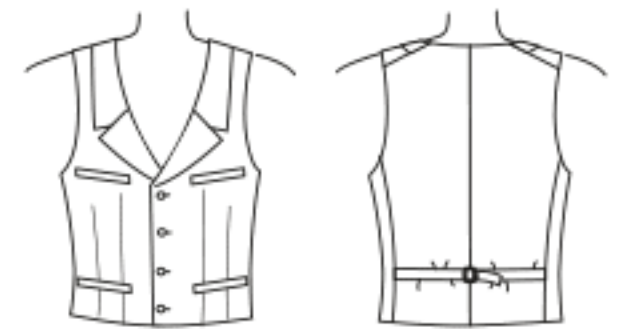
Contraste D- 115, 150cm^{**/**} - 0.8m.

Gilet F/ Chaleco F

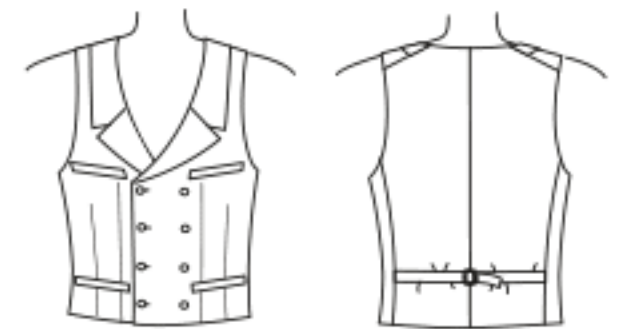
115cm ^{**/**}	1.5	1.5	1.5	1.5	1.5	1.5	m
150cm ^{**/**}	1.0	1.0	1.0	1.0	1.1	1.2	"



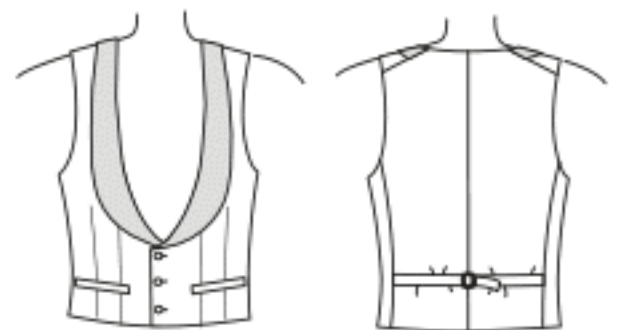
A



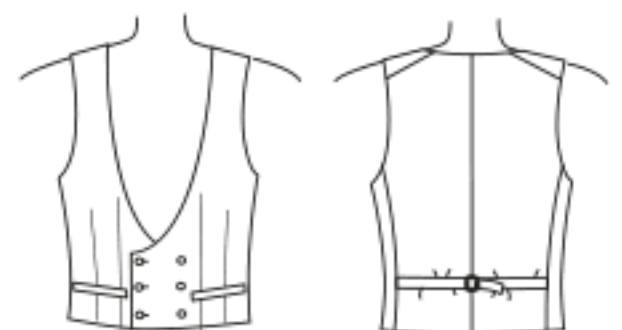
B



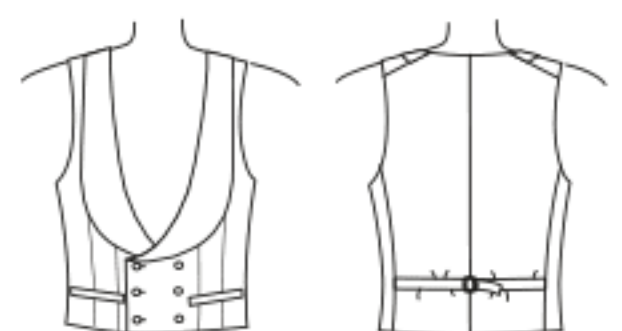
C



D



E



F

*with nap **without nap ***with or without nap
*con pelusa **sin pelusa ***con o sin pelusa

*avecsens **sans sens ***avec ou sans sens