

M8127

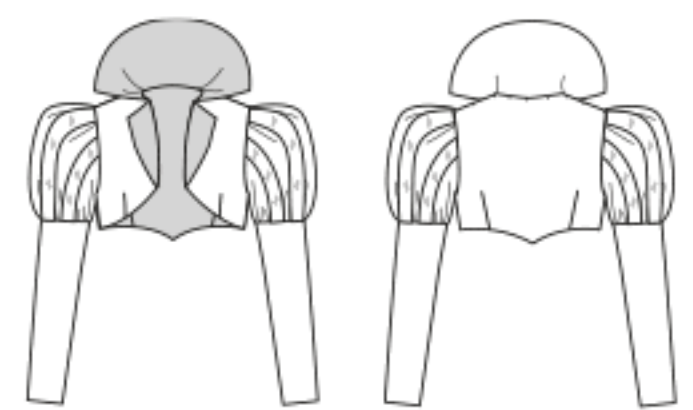
18 PIECES/PIEZAS

MISSES' COSTUMES

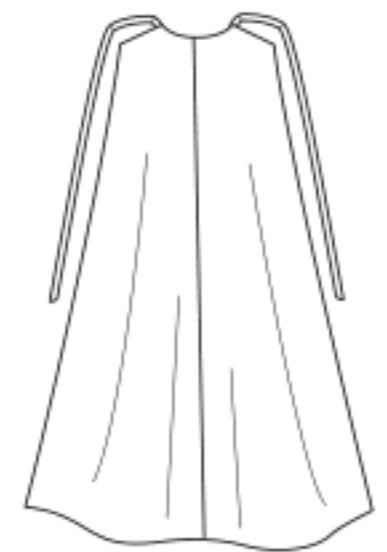
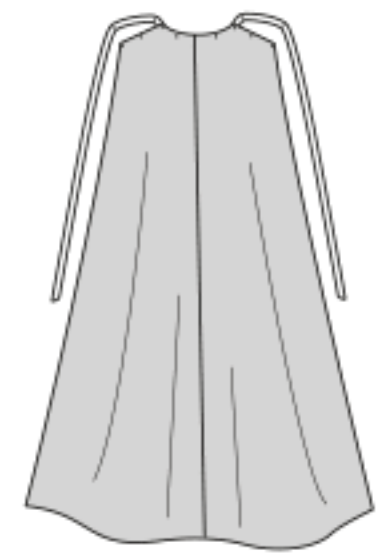
Suggested Fabrics: Twill, Satin/Sateen. **Contrast A:** Satin/Sateen. **Contrast B:** Faux Fur. **Lining B,C:** Cotton, Cotton Blends, Lining Fabric. **Tabs and Appliques C:** Felt. **Interfacing:** Fusible Hair Canvas.

Notions: **A:** Eight Hooks, One Eye, 6 yds. (5.5m) of 1¼" (3.2cm) Ribbon. **B:** Three 4" - 5" (10cm - 13cm) Tassels, Six 5/8" (1.5cm) Buttons, 3¼ yds. (3.0m) of ½" (1.3cm) Flexible Braid, One Hook and Eye. **C:** 4 yds. (3.7m) of 3/8" - 5/8" (1.0cm - 1.5cm) Ribbon, 2 yds. (1.9m) of ¼" (0.6cm) Covered Plastic Boning, One 14" (36cm) Invisible Zipper. For Hats: See McCall's Pattern M7643.

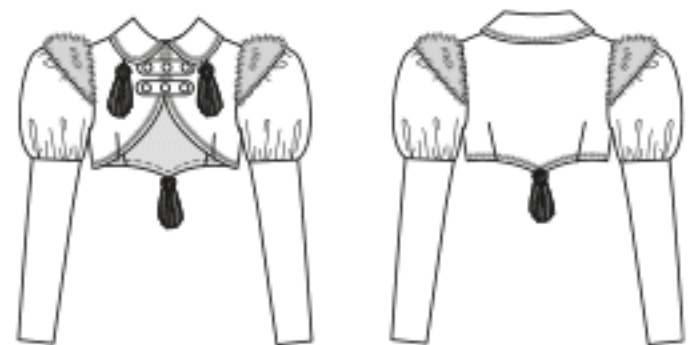
Sizes	6	8	10	12	14	16	18	20	22	
Bolero and Cape A										
45**/**	3¾	3¾	3½	3⅝	3⅝	3¾	3¾	4	4	Yd
60**/**	2½	2½	2⅝	2¾	2¾	2¾	2¾	2¾	2⅞	"
Contrast A										
45**/**	2¾	2⅞	2⅞	3	3	3⅞	3⅞	3¼	3¼	"
60**/**	1¾	1⅞	2	2	2	2¼	2¼	2¼	2¼	"
Interfacing A – 22"										
45**/**	1¾	1⅞	1⅞	1⅞	1⅞	2	2	2	2⅞	"
Bolero B										
45**/**	1¾	1¾	1¾	1¾	1⅞	2	2	2	2	Yd
60**/**	1¼	1⅜	1⅜	1⅜	1⅜	1⅜	1½	1½	1½	"
Contrast B – 15" x 15" Faux Fur										
Interfacing B – 22"										
45***	5/8	5/8	5/8	¾	¾	¾	7/8	7/8	7/8	Yd
60***	5/8	5/8	5/8	5/8	5/8	5/8	5/8	5/8	5/8	"
Dress C										
45**/**	3¾	3¾	3½	3½	3½	3⅝	3¾	3¾	3¾	Yd
60**/**	2½	2½	2½	2½	2⅝	2¾	2¾	2¾	2⅞	"
Tabs C – 9" x 12" Felt (Two), Appliqués C – 9" x 12" Felt (One)										
Interfacing C – 22"										
45***	1	1	1	1	1	1⅞	1¼	1¼	1⅜	Yd
60***	½	½	½	5/8	5/8	5/8	5/8	5/8	5/8	"
Paper-Backed Fusible Webbing C – 14" x 10"										



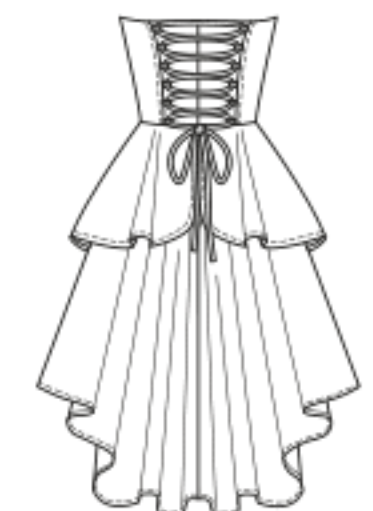
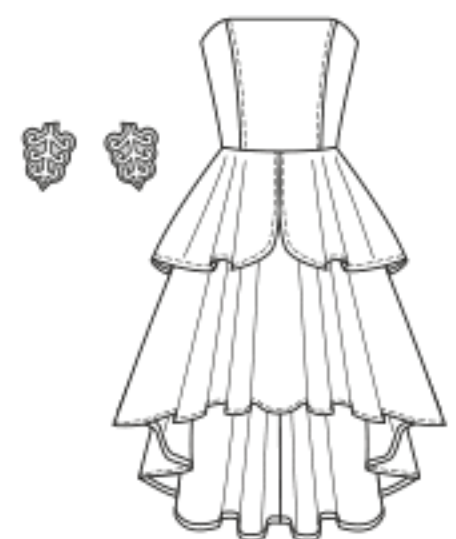
A



A



B



C

DÉGUISEMENTS POUR JEUNE FEMME/ DISFRACES PARA SEÑORITAS

Tailles/ Tallas	6	8	10	12	14	16	18	20	22	
Françaises	34	36	38	40	42	44	46	48	50	
Europeas	32	34	36	38	40	42	44	46	48	
Boléro et Cape A/ Bolero y Capa A										
115cm**/**	3.1	3.1	3.2	3.4	3.4	3.5	3.5	3.7	3.7	m
150cm**/**	2.3	2.3	2.4	2.6	2.6	2.6	2.6	2.6	2.8	"
Contraste A										
115cm**/**	2.6	2.7	2.7	2.8	2.8	2.9	2.9	3.0	3.0	m
150cm**/**	1.6	1.8	1.9	1.9	1.9	2.1	2.1	2.1	2.1	"
Entoilage A/ Entretela A										
56cm	1.6	1.8	1.8	1.8	1.8	1.9	1.9	1.9	2.0	m
Boléro B/ Bolero B										
115cm**/**	1.6	1.6	1.6	1.6	1.8	1.9	1.9	1.9	1.9	m
150cm**/**	1.2	1.3	1.3	1.3	1.3	1.3	1.4	1.4	1.4	"
Contraste B – Fourrure Synthétique/ Contraste B – Piel Sintética, 38cm x 38cm										
Entoilage B/ Entretela B										
56cm	1.3	1.3	1.3	1.4	1.4	1.4	1.5	1.5	1.5	m
Doublure B/ Forro B										
115cm**	0.6	0.6	0.6	0.7	0.7	0.7	0.8	0.8	0.8	m
150cm**	0.6	0.6	0.6	0.6	0.6	0.6	0.6	0.6	0.6	"
Robe C/ Vestido C										
115cm**/**	3.1	3.1	3.2	3.2	3.2	3.4	3.5	3.5	3.5	m
150cm**/**	2.3	2.3	2.3	2.3	2.4	2.6	2.6	2.6	2.7	"
Pattes C – Feutre (2)/ Lenguetas C – Fielto (2), 23cm x 30.5cm										
Appliqués C – Feutre (1)/ Aplicaciones C – Fielto (1), 23cm x 30.5cm										
Entoilage C/ Entretela C										
56cm	1.0	1.0	1.0	1.0	1.0	1.1	1.2	1.2	1.3	m
Doublure C/ Forro C										
115cm**	0.5	0.5	0.5	0.6	0.6	0.6	0.6	0.6	0.6	m
150cm**	0.5	0.5	0.5	0.5	0.5	0.5	0.5	0.5	0.5	"

Voile Thermocollant Sur Papier C/ Agente Termoadhesivo Con Papel De Protección C – 35cm x 25.5cm