

# M8076

12 PIECES/PIEZAS

## MISSES' HATS

**Suggested Fabrics: A,B,Contrast 1B,2B:** Brocade, Home Dec. **C:** Silk.

**Contrast 1C:** Taffeta. **Contrast 2C:** Netting. **D:** Linen. **Lining D:** Lining Fabric.

**Sew-In Interfacing A,B,C,D:** Buckram.

**Notions: A,B,C,D:** 2 yds. (1.9m) of 1½" (3.8cm) Ribbon (**For D-** Grosgrain), 19 Gauge Millinery Wire, Hot Glue Gun, Glue and Fabric Glue. **A,B,C:** 1¼ yds. (1.2m) of each ¾"-½" (1cm-1.3cm) Flexible Braid Trim and Lace Edging. **A,B:** Two Hair Clips and Feathers. **B:** One Flower. **C:** ¼ yd. (0.3m) of ¼" (0.6cm) Ribbon, 2 yds. (1.9m) of 1" (2.5cm) Ribbon, Flowers, Leaves, Sprigs of Leaves and Pearl Spray. **C,D:** 2 yds. (1.9m) of 1" (2.5cm) Grosgrain Ribbon.

**A-** 45, 60\*\*\*- ½ yd.

**Sew-In Interfacing A (Buckram)-** 18, 20"- ½ yd.

**Hat B-** 45, 60\*\*\*- ½ yd.

**Contrast 1B-** 45, 60\*\*\*- ½ yd.

**Contrast 2B-** 45, 60\*\*\*- ⅞ yd.

**Sew-In Interfacing B (Buckram)-** 18, 20"- ½ yd.

**C-** 45, 60\*\*- ⅞ yd.

**Contrast 1C-** 45, 60\*\*- ⅝ yd.

**Contrast 2C-** 54\*\*\*- 1 yd.

**Sew-In Interfacing C (Buckram)-** 18, 20"- ⅝ yd.

**D-** 45, 60\*\*\*- ⅝ yd.

**Lining D-** 45, 60\*\*\*- ⅜ yd.

**Sew-In Interfacing D (Buckram)-** 18, 20"- ⅞ yd.

## CHAPEAUX POUR JEUNES FEMMES/ SOMBREROS PARA JÓVENES Y SEÑORAS

**A-** 115, 150cm\*\*\*- 0.5m

**Entoilage à Coudre A (Bougran)/ Entretela Para Coser A (Bocací)-** 18, 20cm- 0.5m

**Chapeau B/ Sombrero B-** 115, 150cm\*\*\*- 0.5m

**Contraste 1B-** 115, 150cm\*\*\*- 0.5m

**Contraste 2B-** 115, 150cm\*\*\*- 0.8m

**Entoilage à Coudre B (Bougran)/ Entretela Para Coser B (Bocací)-** 18, 20cm- 0.5m

**C-** 115, 150cm\*- 0.8m

**Contraste 1C-** 115, 150cm\*- 0.6m

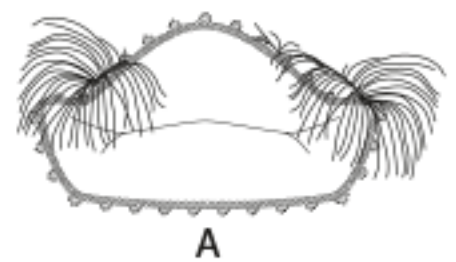
**Contraste 2C-** 140cm\*\*- 1.0m

**Entoilage à Coudre C (Bougran)/ Entretela Para Coser C (Bocací)-** 18, 20cm- 0.6m

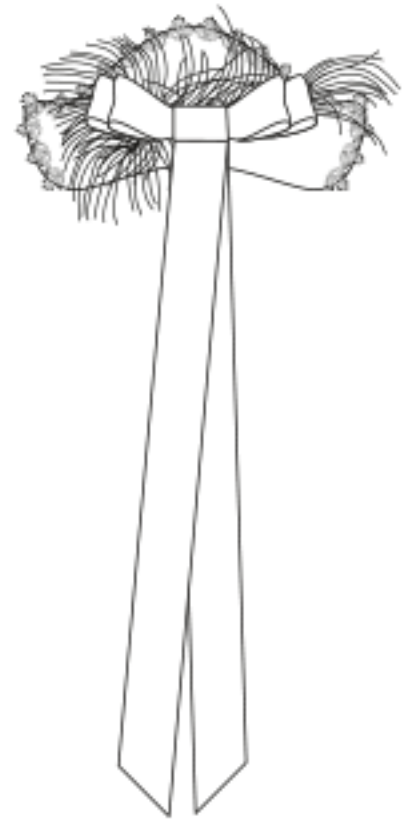
**D-** 45, 60cm\*\*- 0.6m

**Doublure D/ Forro D-** 115, 150cm\*\*- 0.4m

**Entoilage à Coudre D (Bougran)/ Entretela Para Coser D (Bocací)-** 18, 20cm- 0.8m



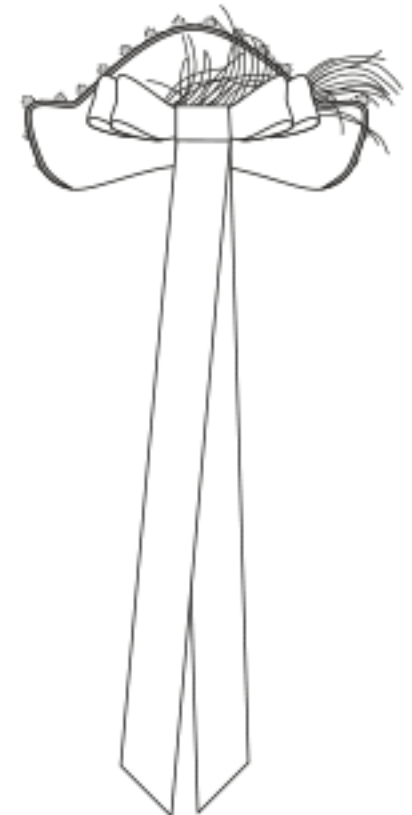
A



A



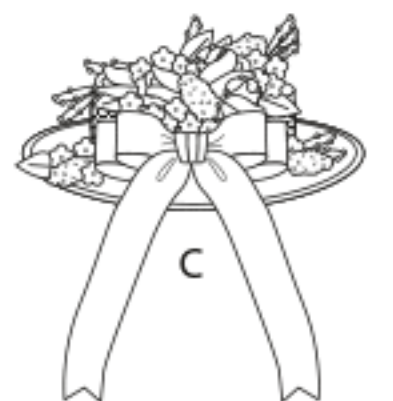
B



B



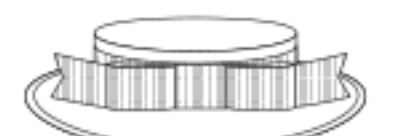
C



C



D



D