



M8033

14 PIECES/PIEZAS

Easy
Facile
Fácil

MISSSES' DRESSES with A/B, C, D cup sizes

Fabrics: Lawn, Crepes, Gauze, Polished Cotton. **Contrast:** Lace, Sheers. Extra fabric needed to match plaids, stripes or one-way design fabrics.

Notions: Twelve 1/2" (1.3cm) Buttons, 1 yd. (1m) of 3/8" (1cm) Elastic, One Hook and Eye.

Sizes	6	8	10	12	14	16	18	20	22	
A										
45****	3	3	3	3	3	3	3 1/2	3 1/2	3 1/2	Yd
60****	2 7/8	2 7/8	2 7/8	2 7/8	2 3/4	2 3/4	2 1/2	2 1/2	2 1/2	"

Contrast A (Tier)- 45, 60**** - 3/4 yd

Fusible Interfacing A (Front Facing And Back Facing)- 18, 20" - 1 3/8 yds.

Sizes	6	8	10	12	14	16	18	20	22	
B										
45****	6	6	6 1/8	6 1/8	6 1/4	6 1/4	6 5/8	6 3/4	6 7/8	Yd
60****	4 1/4	4 1/4	4 3/8	4 3/8	4 1/2	4 1/2	4 7/8	4 7/8	4 7/8	"

Sizes	6	8	10	12	14	16	18	20	22	
C										
45****	4 7/8	4 7/8	5	5 1/8	5 1/8	5 1/8	5 7/8	6	6 1/8	Yd
60****	3 1/2	3 1/2	3 5/8	3 5/8	3 5/8	3 5/8	4	4 1/8	4 1/4	"

Contrast C (Tiers)

Sizes	6	8	10	12	14	16	18	20	22	
45**	1 1/4	1 1/4	1 1/4	1 1/4	1 3/8	1 3/8	1 3/8	1 1/2	1 1/2	Yd
60**	1 1/8	1 1/8	1 1/8	1 1/8	1 1/8	1 1/8	1 1/8	1 1/8	1 1/8	"

Fusible Interfacing B,C (Front Facing And Back Facing)- 18, 20" - 1 7/8 yds.

FINISHED GARMENT MEASUREMENTS

A/B Cup Bust	34	35	36	37 1/2	39 1/2	41 1/2	43 1/2	45 1/2	47 1/2	In
C Cup Bust	35	36	37	38 1/2	40 1/2	42 1/2	44 1/2	46 1/2	48 1/2	"
D Cup Bust	36	37	38	39 1/2	41 1/2	43 1/2	45 1/2	47 1/2	49 1/2	"
A,B,C Hip	37 3/4	38 3/4	39 3/4	41 1/4	43 1/4	45 1/4	47 1/4	49 1/4	51 1/4	"
Back length from base of neck:										
A	36 1/2	36 3/4	37	37 1/4	37 1/2	37 3/4	38	38 1/4	38 1/2	In
B,C	54 1/2	54 3/4	55	55 1/4	55 1/2	55 3/4	56	56 1/4	56 1/2	"

ROBES POUR JEUNE FEMME/ VESTIDOS PARA JÓVENES Y SEÑORAS

Tailles/ Tallas	6	8	10	12	14	16	18	20	22
Françaises	34	36	38	40	42	44	46	48	50
Europeas	32	34	36	38	40	42	44	46	48

Sizes	6	8	10	12	14	16	18	20	22	
A										
115cm***	2.7	2.7	2.7	2.7	2.7	2.7	3.2	3.2	3.2	m
150cm***	2.0	2.0	2.0	2.0	2.1	2.1	2.3	2.3	2.3	"

Contraste A (Volant)/ Contraste A (Volante)- 115, 150cm*** - 0.7m

Entoilage Thermocollant A (Parementure Du Devant Et Parementure Du Dos)/ Entretela

Termoadhesiva A (Vista Del Frente Y Vista De Atras)- 46, 51cm- 1.3m

Sizes	6	8	10	12	14	16	18	20	22	
B										
115cm***	5.5	5.5	5.6	5.6	5.8	5.8	6.1	6.2	6.3	m
150cm***	3.9	3.9	4.0	4.0	4.2	4.2	4.5	4.5	4.5	"

Sizes	6	8	10	12	14	16	18	20	22	
C										
115cm***	4.5	4.5	4.6	4.7	4.7	4.7	5.4	5.5	5.6	m
150cm***	3.2	3.2	3.4	3.4	3.4	3.4	3.7	3.8	3.9	"

Contraste C (Volants)/ Contraste C (Volantes)

Sizes	6	8	10	12	14	16	18	20	22	
115cm*	1.2	1.2	1.2	1.2	1.3	1.3	1.3	1.4	1.4	m
150cm*	1.1	1.1	1.1	1.1	1.1	1.1	1.1	1.1	1.1	"

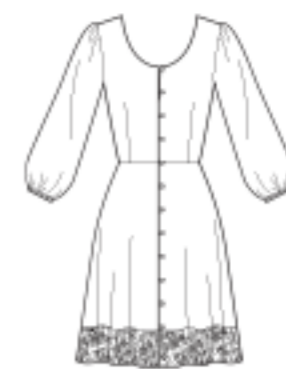
Entoilage Thermocollant B,C (Parementure Du Devant Et Parementure Du Dos)/ Entretela

Termoadhesiva B,C (Vista Del Frente Y Vista De Atras)- 46, 51cm- 1.8m

*with nap **without nap ***with or without nap

*avecsens **sans sens ***avec ou sans sens

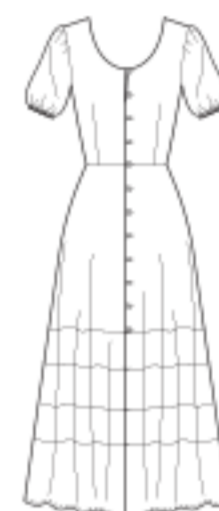
*con pelusa **sin pelusa ***sin o con pelusa



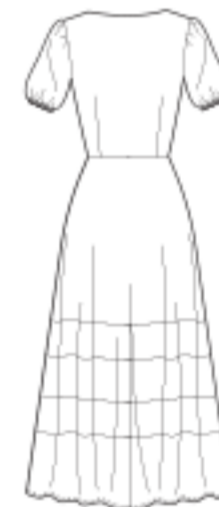
A



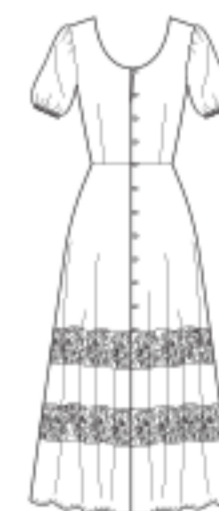
A



B



B



C



C

©2020 McCall's® a CSS Industries, Inc. brand, Berwick, PA 18603. All rights reserved. Trademarks Reg. U.S. Pat. & TM Off. Marca Registrada. Sold for individual home use only and not for commercial or manufacturing purposes. www.mccallpattern.com Reserve à un usage personnel. Utilisation commerciale ou industrielle strictement interdite.

MADE IN U.S.A. FABRIQUE AUX ETATS-UNIS.



9

M8033/A5

1