

4" of crosswise folded knit must **STRETCH** from here
 10 cm de tricot plié sur le travers doivent s'étirer d'ici
 10 cm de tejido de punto doblado al través deben estirarse desde acá

To Here (35%)
 jusqu'ici (35%)
 hasta acá (35%)

Easy/Facile/Fácil

M8028

MISSES' ROMPER AND JUMPSUIT: Very loose-fitting, pull-on romper **A** and jumpsuit **B, C** have elastic at waist, neckline, side pockets, and sleeve variations. **A:** Narrow hems. **B:** Stitched hems. **C:** Cuffs.

BARBOTEUSE ET COMBINAISON POUR JEUNE FEMME: Barboteuse **A** et combinaison **B, C** très amples à taille et encolure élastiques, poches latérales et variations de manche. **A:** Ourlets étroits. **B:** Ourlets piqués. **C:** Revers.

MAMELUCO Y ENTERIZO PARA JÓVENES Y SEÑORAS: Mameluco **A** y enterizo **B, C** de entalle muy suelto con elástico en cintura y escote, bolsillos laterales y variaciones de manga. **A:** Doblados angostos. **B:** Doblados cosidos a máquina. **C:** Vueltas.

Combinations: **A(S-M-L-XL)**

SUGGESTED FABRICS: Moderate Stretch Knits (35% cross grain): Jersey, Cotton Knits, Interlock.

Séries/Combinaciones: **A(P/P-M/M-G/G-TG/XG)**

TISSUS CONSEILLÉS: Maille à élasticité moyenne (35% en largeur): Jersey, Jersey de coton, Interlock.

TELAS SUGERIDAS: Tejidos de punto stretch (35% a lo ancho): Jersey, Tejidos de punto de algodón, Interlock.

SIZES	S	M	L	XL
	8-10	12-14	16-18	20-22
A 60"	1 ³ / ₈	1 ³ / ₈	1 ⁵ / ₈	1 ⁵ / ₈
B 60"	1 ⁷ / ₈	2 ¹ / ₈	2 ³ / ₈	2 ¹ / ₂
C 60"	2 ¹ / ₂	2 ³ / ₄	2 ³ / ₄	2 ³ / ₄

NOTIONS: **A, B:** 2¹/₈ yds. of ³/₈" Elastic. **C:** 3 yds. of ³/₈" Elastic.

TAILLES/TALLAS	P/P	M/M	G/G	TG/XG
	8-10	12-14	16-18	20-22
A 150cm*	1.30	1.30	1.50	1.50
B 150cm*	1.80	2.00	2.20	2.30
C 150cm*	2.30	2.60	2.60	2.60

MERCERIE: **A, B:** 2.00m d'élastique de 1cm. **C:** 2.80m d'élastique de 1cm.

MERCERÍA: **A, B:** 2.00m de Elástico de 1cm. **C:** 2.80m de Elástico de 1cm.

MESURES DU VÊTEMENT FINI/MEDIDAS DE LA PRENDA ACABADA

Largeur, chaque jambe/Ancho, cada pierna

A	56	59	61	64
B	31	33	36	38

Longueur - dos, votre nuque à l'ourlet/Largo de espalda desde la nuca

A	76	78	79	80
B, C	140	141	142	143

FINISHED GARMENT MEASUREMENTS

Width, each leg

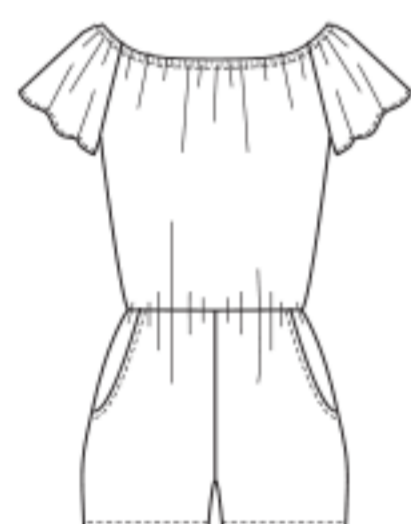
A	22	23	24	25
B	12	13	14	15

Back length from base of neck

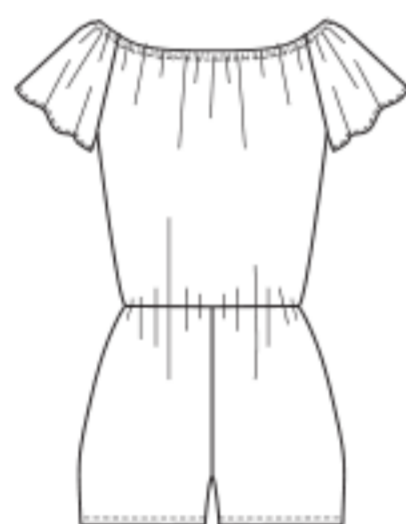
A	30	30 ¹ / ₂	31	31 ¹ / ₂
B, C	55	55 ¹ / ₂	56	56 ¹ / ₂

*With Nap **Without Nap ***With or Without Nap

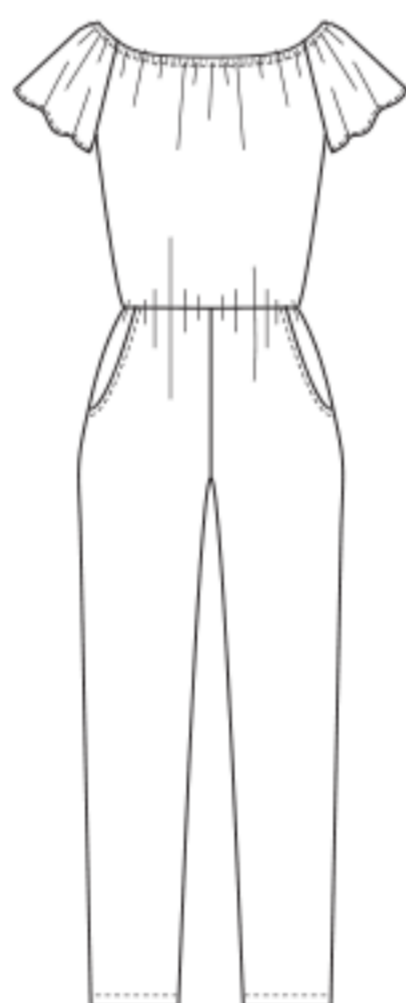
*Avec Sens **Sans Sens ***Avec ou Sans Sens *Con Pelillo **Sin Pelillo ***Con o Sin Pelillo



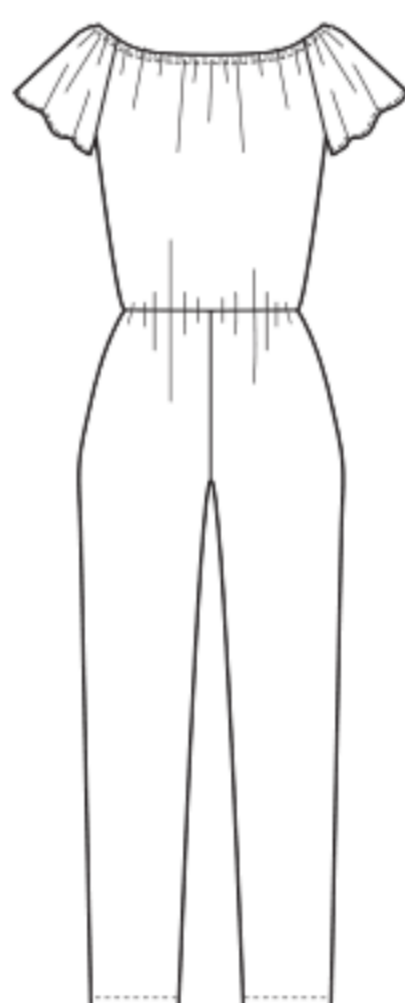
A



A



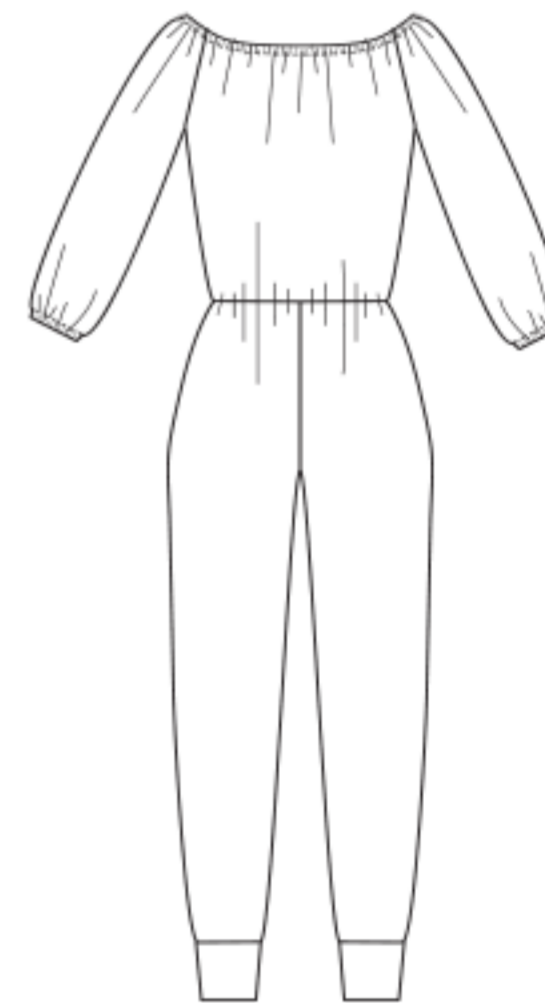
B



B



C



C



©2019 McCall's® a CSS Industries, Inc. brand, Berwick, PA 18603. All rights reserved. Trademarks Reg. U.S. Pat. & TM Off. Marca Registrada. Sold for individual home use only and not for commercial or manufacturing purposes. www.mccallpattern.com Reserve à un usage personnel. Utilisation commerciale ou industrielle strictement interdite.

MADE IN U.S.A. FABRIQUÉ AUX ÉTATS-UNIS.

