

M7641

MISSES' COSTUME: Partially lined, fitted, zip front jacket and coat have attached skirt and overskirt and gathered sleeves with sleevehead. Contrast collar, lapels, and cuffs. **B:** Contrast peplum, decorative buttons. Belt has contrast tie and applique.

Combinations: **A5(6-8-10-12-14), E5(14-16-18-20-22)**

SUGGESTED FABRICS: **A, B, Contrast 1A, 2B:** Wool, Wool Blends, Brocade, Gabardine, Lightweight Synthetic Leather. **C, Contrast 2A, 3B:** Synthetic Leather, Synthetic Suede. **Sleevehead A, B:** Netting.

SIZES	6	8	10	12	14	16	18	20	22	
A 45****	3 ⁷ / ₈	3 ⁷ / ₈	3 ⁷ / ₈	3 ⁷ / ₈	4	4	4 ¹ / ₄	4 ¹ / ₄	4 ¹ / ₄	Yds.
60****	2 ⁵ / ₈	2 ⁵ / ₈	2 ⁵ / ₈	2 ⁵ / ₈	3	3	3 ³ / ₈	3 ³ / ₈	3 ³ / ₈	"

CONTRAST 1A

45****	1 ¹ / ₈	1 ¹ / ₈	1 ¹ / ₈	1 ¹ / ₈	1 ¹ / ₈	1 ¹ / ₈	1 ¹ / ₈	1 ¹ / ₈	1 ¹ / ₈	"
60****	7 ⁸ / ₈	7 ⁸ / ₈	7 ⁸ / ₈	7 ⁸ / ₈	7 ⁸ / ₈	7 ⁸ / ₈	7 ⁸ / ₈	7 ⁸ / ₈	7 ⁸ / ₈	Yd.

CONTRAST 2A - 3¹/₂" x 17"

LINING A

45"	1 ¹ / ₂	1 ¹ / ₂	1 ¹ / ₂	1 ¹ / ₂	1 ¹ / ₂	1 ¹ / ₂	1 ¹ / ₂	1 ¹ / ₂	1 ¹ / ₂	Yds.
-----	-------------------------------	-------------------------------	-------------------------------	-------------------------------	-------------------------------	-------------------------------	-------------------------------	-------------------------------	-------------------------------	------

FUSIBLE INTERFACING A

18", 20"	1 ¹ / ₂	1 ¹ / ₂	1 ⁵ / ₈	1 ⁵ / ₈	2	2	2	2	2	"
----------	-------------------------------	-------------------------------	-------------------------------	-------------------------------	---	---	---	---	---	---

B 45****	4 ⁵ / ₈	4 ⁵ / ₈	4 ⁵ / ₈	5 ¹ / ₈	5 ¹ / ₈	5 ¹ / ₈	5 ³ / ₄	5 ³ / ₄	5 ³ / ₄	Yds.
60****	3 ³ / ₈	3 ³ / ₈	3 ³ / ₈	3 ¹ / ₂	3 ⁵ / ₈	3 ³ / ₄	3 ³ / ₈	4	4 ¹ / ₈	"

CONTRAST 1B

45****	1 ¹ / ₈	1 ¹ / ₈	1 ¹ / ₈	1 ¹ / ₈	1 ¹ / ₈	1 ¹ / ₈	1 ¹ / ₈	1 ¹ / ₈	1 ¹ / ₈	"
60****	7 ⁸ / ₈	7 ⁸ / ₈	7 ⁸ / ₈	7 ⁸ / ₈	7 ⁸ / ₈	7 ⁸ / ₈	7 ⁸ / ₈	7 ⁸ / ₈	7 ⁸ / ₈	Yd.

CONTRAST 2B

45****	3 ⁸ / ₈	3 ⁸ / ₈	3 ⁸ / ₈	3 ⁸ / ₈	1 ² / ₂	1 ² / ₂	1 ² / ₂	5 ⁸ / ₈	5 ⁸ / ₈	"
60****	3 ⁸ / ₈	3 ⁸ / ₈	3 ⁸ / ₈	3 ⁸ / ₈	3 ⁸ / ₈	3 ⁸ / ₈	3 ⁸ / ₈	3 ⁸ / ₈	3 ⁸ / ₈	"

CONTRAST 3B - 3¹/₂" x 17"

LINING B - 45" - 1¹/₂ yds.

FUSIBLE INTERFACING B

18", 20"	2	2	2 ¹ / ₈	2 ¹ / ₈	2 ¹ / ₈	2 ¹ / ₄	2 ¹ / ₄	2 ¹ / ₄	2 ³ / ₈	Yds.
----------	---	---	-------------------------------	-------------------------------	-------------------------------	-------------------------------	-------------------------------	-------------------------------	-------------------------------	------

SLEEVEHEAD A, B - 72**** - 1/2 yd.

C - 45", 60**** - 3/8 yd.

CONTRAST C - 45", 60**** - 3/8 yd.

FUSIBLE INTERFACING C

18", 20"	7 ⁸ / ₈	7 ⁸ / ₈	1	1	1	1 ¹ / ₈	1 ¹ / ₈	1 ¹ / ₄	1 ¹ / ₄	Yds.
----------	-------------------------------	-------------------------------	---	---	---	-------------------------------	-------------------------------	-------------------------------	-------------------------------	------

NOTIONS: **A, B:** One 12" Invisible Separating Zipper, 3/4 yd. of 1¹/₂" Pre-gathered Lace, One Pair of 1/2" Shoulder Pads. **B:** Four 3/4" Buttons.

FINISHED GARMENT MEASUREMENTS

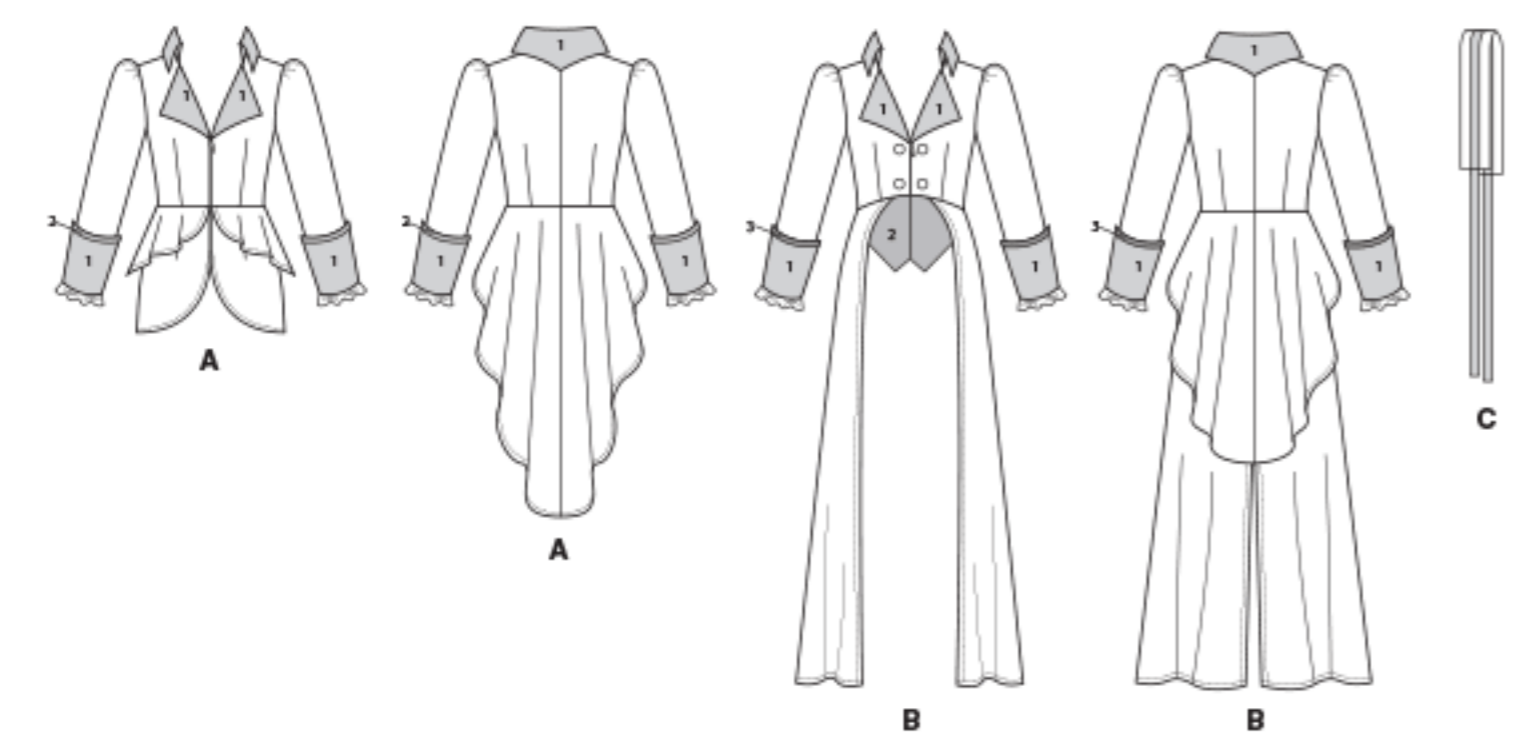
Measurement at bustline

A, B	33 ¹ / ₂	34 ¹ / ₂	35 ¹ / ₂	37	39	41	43	45	47	Ins.
------	--------------------------------	--------------------------------	--------------------------------	----	----	----	----	----	----	------

Back length from base of neck

A	27 ³ / ₄	28	28 ¹ / ₄	28 ¹ / ₂	28 ³ / ₄	29	29 ¹ / ₄	29 ¹ / ₂	29 ³ / ₄	"
B	44 ¹ / ₂	44 ³ / ₄	45	45 ¹ / ₄	45 ¹ / ₂	45 ³ / ₄	46	46 ¹ / ₄	46 ¹ / ₂	"

*With Nap **Without Nap ***With or Without Nap



DÉGUISEMENT POUR JEUNE FEMME: Veste et manteau partiellement doublés, ajustés, zippés devant, à jupe et dessus de jupe attachés et manches froncées avec soutien. Col, revers et poignets contrastants. **B:** Basque contrastante, boutons décoratifs. Ceinture avec attache et appliqué contrastants. **DISFRAZ PARA JÓVENES Y SEÑORAS:** Chaqueta y abrigo con forro parcial, entallados, con cremallera en el frente, falda y sobrefalda unidos y mangas fruncidas con soporte de manga. Cuello, solapas y puños contrastantes. **B:** Faldón contrastante, botones decorativos. Cinturón con lazo y aplicación contrastantes.

Séries/Combinaciones: **A5(6-8-10-12-14), E5(14-16-18-20-22)**

TISSUS CONSEILLÉS: **A, B, Contraste 1A, 2B:** Laine, Lainage, Brocart, Gabardine, Simili cuir léger. **C, Contraste 2A, 3B:** Simili cuir, Simili daim. **Soutien de manche A, B:** Tulle.

TELAS SUGERIDAS: **A, B, Contraste 1A, 2B:** Lana, Mezclas de lana, Brocado, Gabardina, Cuero sintético liviano. **C, Contraste 2A, 3B:** Cuero sintético, Gamuza sintética. **Soporte de manga A, B:** Tul.

TAILLES/TALLAS 6 8 10 12 14 16 18 20 22

A 115cm***	3.60	3.60	3.60	3.60	3.70	3.70	3.90	3.90	3.90	m
150cm***	2.40	2.40	2.40	2.40	2.80	2.80	2.90	2.90	2.90	m

CONTRASTE 1A

115cm***	1.10	1.10	1.10	1.10	1.10	1.10	1.10	1.10	1.10	m
150cm***	0.80	0.80	0.80	0.80	0.80	0.80	0.80	0.80	0.80	m

CONTRASTE 2A - 8.8cm x 43cm

DOUBLURE/FORRO A

115cm	1.40	1.40	1.40	1.40	1.40	1.40	1.40	1.40	1.40	m
-------	------	------	------	------	------	------	------	------	------	---

ENTOILAGE THERMOCOLLANT/ENTRETELA TERMOADHESIVA A

46, 51cm	1.40	1.40	1.50	1.50	1.90	1.90	1.90	1.90	1.90	m
----------	------	------	------	------	------	------	------	------	------	---

B 115cm***	4.30	4.30	4.30	4.70	4.70	4.70	5.30	5.30	5.30	m
150cm***	3.10	3.10	3.10	3.20	3.40	3.50	3.60	3.70	3.80	m

CONTRASTE 1B

115cm***	1.10	1.10	1.10	1.10	1.10	1.10	1.10	1.10	1.10	m
150cm***	0.80	0.80	0.80	0.80	0.80	0.80	0.80	0.80	0.80	m

CONTRASTE 2B

115cm***	0.40	0.40	0.40	0.40	0.50	0.50	0.50	0.60	0.60	m
150cm***	0.40	0.40	0.40	0.40	0.40	0.40	0.40	0.40	0.40	m

CONTRASTE 3B - 8.8cm x 43cm

DOUBLURE/FORRO B - 115cm - 1.40m

ENTOILAGE THERMOCOLLANT/ENTRETELA TERMOADHESIVA B

46, 51cm	1.90	1.90	2.00	2.00	2.00	2.10	2.10	2.10	2.20	m
----------	------	------	------	------	------	------	------	------	------	---

SOUTIEN DE MANCHE/SOPORTE DE MANGA A, B - 180cm** - 0.50m

C - 115, 150cm*** - 0.40m

CONTRASTE C - 115, 150cm*** - 0.40m

ENTOILAGE THERMOCOLLANT/ENTRETELA TERMOADHESIVA C

46, 51cm	0.80	0.80	1.00	1.00	1.00	1.10	1.10	1.20	1.20	m
----------	------	------	------	------	------	------	------	------	------	---

MERCERIE: **A, B:** 1 Fermeture à glissière invisible séparable de 30cm, 0.70m de Dentelle froncée de 3.8cm, 1 Paire d'épaulettes de 1.3cm. **B:** 4 Boutons de 19mm.

MERCERÍA: **A, B:** 1 Cremallera invisible separable de 30cm, 0.70m de Encaje fruncido de 3.8cm, 1 Par de hombreras de 1.3cm. **B:** 4 Botones de 19mm.

MESURES DU VÊTEMENT FIN/MEDIDAS DE LA PRENDA ACABADA

Mesure à la poitrine/Contorno de busto

A, B	85	88	90	94	99	104	109	115	120	cm
------	----	----	----	----	----	-----	-----	-----	-----	----

Longueur - dos, votre nu que à l'ourlet/Largo de espalda desde la nuca

A	71	71	72	72	73	74	74	75	76	cm
---	----	----	----	----	----	----	----	----	----	----

B	113	114	115	115	116	116	117	117	118	cm
---	-----	-----	-----	-----	-----	-----	-----	-----	-----	----

*Avec Sens **Sans Sens ***Avec ou Sans Sens *Con Pelillo **Sin Pelillo ***Con o Sin Pelillo

