

M6044

13 PIECES

MEN'S SHIRTS: Shirts A, B, C, D, E with collar and collar band, front band, pockets and sleeve variations; shirt A has short sleeves; shirts B, C, D, E have long sleeves with cuffs; shirt B has contrast inside collar band and cuffs.

SUGGESTED FABRICS: Lightweight Fabrics Such as Cotton • Cotton Blends • Chambray • Silk Rayon • Washed Silk • Denim. Additional Fabric may be needed to match stripes, plaids or one-way design fabric.

Combinations: XM(Small, Medium, Large), XN(X-Large, XX-Large, XXX-Large)

SIZES	Small	Medium	Large	X-Large	XX-Large	XXX-Large	
	34-36	38-40	42-44	46-48	50-52	54-56	

Shirt A							
45" ***	17/8	2	2	2 1/2	2 5/8	2 5/8	Yds.
60" ***	1 3/8	1 1/2	1 5/8	1 7/8	2	2	"
Fusible Interfacing A 18", 20", 7/8 yd.							

Shirt B							
45" ***	2 1/4	2 3/8	2 3/8	2 5/8	2 3/4	2 7/8	Yds.
60" ***	1 5/8	1 3/4	1 3/4	2 1/8	2 1/4	2 1/4	"
Contrast B (Inside Cuff and Collar Band) 45", 60" ***							
	5/8	5/8	5/8	5/8	3/4	3/4	Yd.

Shirt C							
45" ***	2 1/4	2 3/8	2 1/2	2 7/8	2 7/8	3	Yds.
60" ***	1 3/4	1 3/4	1 3/4	2 1/8	2 1/4	2 1/4	"

Fusible Interfacing B, C
18", 20", 7/8 yd.

Shirt D							
45" ***	2 1/4	2 3/8	2 1/2	2 7/8	2 7/8	3	Yds.
60" ***	1 3/4	1 3/4	1 3/4	2 1/8	2 1/4	2 1/4	"

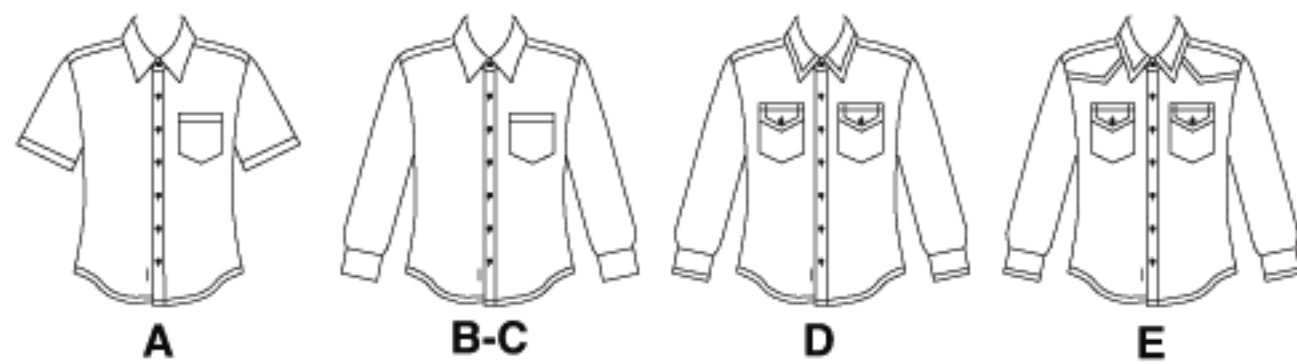
Shirt E							
45" ***	2 3/4	2 3/4	2 7/8	3 1/8	3 1/8	3 1/4	Yds.
60" ***	2	2 1/8	2 1/4	2 1/2	2 1/2	2 1/2	"

Fusible Interfacing D, E
18", 20", 7/8 yd.

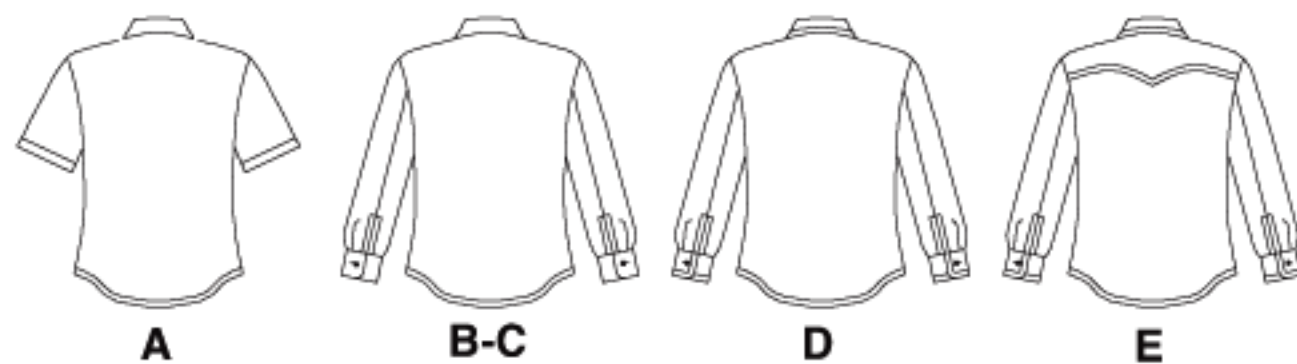
NOTIONS: Shirt A - Seven 1/2" Buttons; Shirt B, C - Nine 1/2" Buttons; Shirt D, E - Eleven 1/2" Buttons.

FINISHED GARMENT MEASUREMENTS

Width, lower edge							
Shirt A, B, C, D, E	40	44	48	52	56	60	Ins.
Back length from base of your neck							
Shirt A, B, C, D, E	29 1/2	30	30 1/2	31	31 1/2	32	"



Front/Devant/Frente



Back/Dos/Espalda

*With Nap **Without Nap ***With or Without Nap

CHEMISES POUR HOMME: Chemises A, B, C, D, E à col et bande de col, bande devant, poches et variations de manche; chemise A à manches courtes; chemises B, C, D, E à manches longues avec des poignets; chemise B à bande de col et poignets intérieurs contrastants.

TISSUS CONSEILLES: Tissus légers tels que Coton • Cotonnade • Chambray • Rayonne de soie • Soie lavée • Denim. Il peut être nécessaire du tissu additionnel pour faire coïncider les rayures, les carreaux ou les dessins à sens unique.

Séries/Combinaciones:

XM(Pet./Peq., Moy./Med., Grande), XN(X-Grande, XX-Grande, XXX-Grande)

SIZES	Pet./Peq.	Moy./Med.	Grande	X-Grande	XX-Grande	XXX-Grande	
	34-36	38-40	42-44	46-48	50-52	54-56	

Chemise/Camisa A							
115cm***	1.80	1.90	1.90	2.30	2.40	2.40	m
150cm***	1.30	1.40	1.50	1.80	1.90	1.90	m
Entoilage Thermocollant/Entretela Termoadhesiva A 46, 51cm, 0.80m							

Chemise/Camisa B							
115cm***	2.10	2.20	2.20	2.40	2.60	2.70	m
150cm***	1.50	1.60	1.60	2.00	2.10	2.10	m
Contraste B (Poignet et Bande de Col Intérieurs)/(Puño y Banda del Cuello Interiores) 115, 150cm***							
	0.60	0.60	0.60	0.60	0.70	0.70	m

Chemise/Camisa C							
115cm***	2.10	2.20	2.30	2.70	2.70	2.80	m
150cm***	1.60	1.60	1.60	2.10	2.10	2.10	m

Entoilage Thermocollant/Entretela Termoadhesiva B, C
46, 51cm, 0.80m

Chemise/Camisa D							
115cm***	2.10	2.20	2.30	2.70	2.70	2.80	m
150cm***	1.60	1.60	1.60	2.00	2.10	2.10	m

Chemise/Camisa E							
115cm***	2.60	2.60	2.70	2.90	2.90	3.00	m
150cm***	1.90	2.00	2.10	2.30	2.30	2.30	m

Entoilage Thermocollant/Entretela Termoadhesiva D, E
46, 51cm, 0.80m

MERCERIE: Chemise A - 7 Boutons de 13mm; Chemise B, C - 9 Boutons de 13mm; Chemise D, E - 11 Boutons de 13mm.

MESURES DU VETEMENT FINI/MEDIDAS DE LA PRENDA ACABADA

Largeur, à l'ourlet/Ancho inferior							
Chemise/Camisa A, B, C, D, E	102	112	122	132	142	152	cm
Longueur - dos, votre nuque à l'ourlet/Largo de espalda desde la nuca							
Chemise/Camisa A, B, C, D, E	75	76	78	79	80	81	cm

CAMISAS PARA HOMBRES: Camisas A, B, C, D, E con cuello y banda de cuello, banda en el frente, bolsillos y variaciones de manga; camisa A de mangas cortas; camisas B, C, D, E de mangas largas con puños; camisa B con banda de cuello y puños en contraste.

TELAS SUGERIDAS: Telas livianas como Algodón • Mezclas de algodón • Chambray • Rayón de seda • Seda lavada • Denim. Puede necesitar tela adicional para hacer coincidir los diseños de rayas, cuadros o diseños en una sola dirección.

MERCERIA: Camisa A - 7 Botones de 13mm; Camisa B, C - 9 Botones de 13mm; Camisa D, E - 11 Botones de 13mm.

*Avec Sens **Sans Sens ***Avec ou Sans Sens

*Con Pelillo **Sin Pelillo ***Con o Sin Pelillo