

K4336

12 PIECES

CHILDREN'S AND MISSES' APRONS

Fabrics: 1A, 2A, 1B: Broadcloth, Calico, Chambray, Chintz, Cotton Types, Gingham, Linen Types, Poplin. **3A, 2B:** Felt Scraps. **Interfacing:** Lightweight Fusible.

Notions: Thread, One Pkg. of ½" (1.3cm) Single-Fold Bias Tape, One Pin Back.

Also for A: ⅝" - ¾" (1.5cm - 2.0cm) Flat Lace Trim: ½ yd. (0.5m) for Child's Sizes and ⅝ yd. (0.6m) for Misses' Sizes.

Sizes	CHILDREN'S			MISSES'		
	S	M	L	S	M	L
	3-4	5-6	7-8	10-12	14-16	18-20

Apron A

Fabric 1 (Apron):

45"*/**	1¾	2	2⅛	2⅝	2⅝	2⅝	Yd
115cm*/**	1.6	1.9	2.0	2.4	2.4	2.4	m

Fabric 2 (Contrast Flower): 45"*/** - ⅜ yd. (115cm*/** - 0.4m)

Fabric 3 (Flower Base): 6" x 6" Remnant (15cm x 15cm)

Interfacing: 20"**- ½ yd. (51cm**- 0.5m)

Apron B

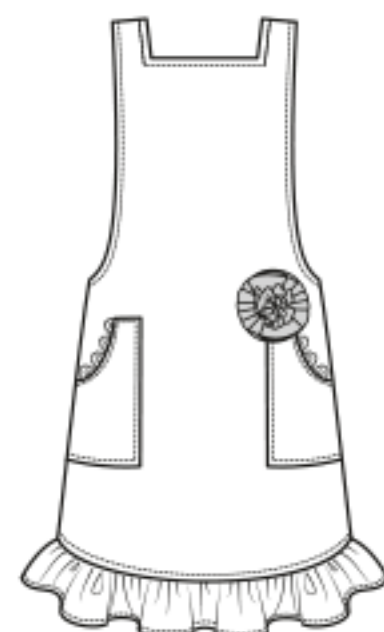
Fabric 1 (Apron, Flower):

45"*/**	1⅜	1½	1⅝	2⅝	2⅝	2¾	Yd
115cm*/**	1.3	1.4	1.5	2.4	2.4	2.6	m

Fabric 2 (Flower Base): 6" x 6" Remnant (15cm x 15cm)

Interfacing: 20"**- ½ yd. (51cm**- 0.5m)

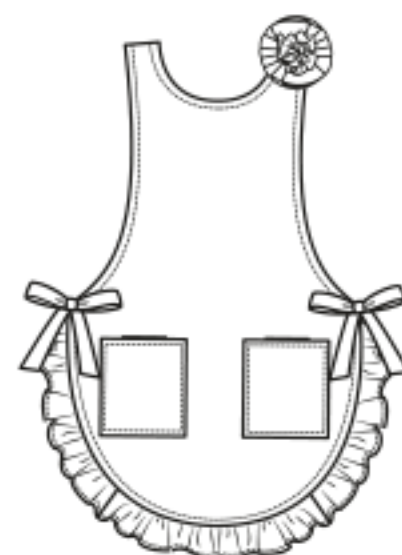
*with nap **without nap



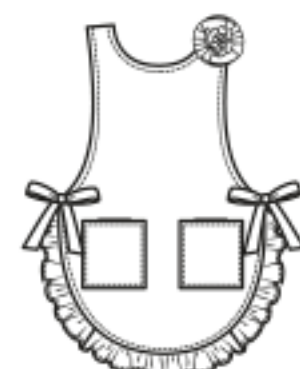
A



A



B



B