



## K4257 Men's Vests

S-M-L-XL-XXL

Lined vests have front button closures. **A:** V-neckline front with topstitching details.  
**B:** Stand-up collar, patch pockets with flaps.

**FABRICS:** Designed for medium weight woven fabrics.

**Suggested Fabrics:** Wool blends, cotton types, fleece, corduroy. **Interfacing:** Sew-in.

**Lining:** Lining fabrics.

### STANDARD BODY MEASUREMENTS:

SIZES:	S	M	L	XL	XXL	
Chest	34-36	38-40	42-44	46-48	50-52	"
	86-91	96-101	106-111	116-122	127-132	cm
Waist	28-30	32-34	36-38	40-42	44-46	"
	71-76	81-86	91-96	101-106	111-116	cm
Hip	35-37	39-41	43-45	47-49	51-53	"
	89-94	99-104	109-114	119-124	129-134	cm
Neck	14½	15½	16½	17½	18½	"
	37	39	42	44	47	cm

### FINISHED GARMENT MEASUREMENTS:

SIZES:	S	M	L	XL	XXL	
Width, lower edge						
A, B	41½ (105.5)	44½ (113.5)	47½ (121.5)	51½ (130.3)	54½ (138.5)	" (cm)
Finished Back Length From Base of Your Neck						
A, B	25½ (65.3)	26 (66)	26½ (67.3)	27 (69)	27½ (70.3)	" (cm)
Finished Length at Center Back From Waist						
A, B	7½ (18.3)	7½ (19.5)	8½ (21.3)	8½ (22.5)	9½ (23.3)	" (cm)

**MATERIAL REQUIRED:** Fabric requirement allows for nap, one-way design or shading.

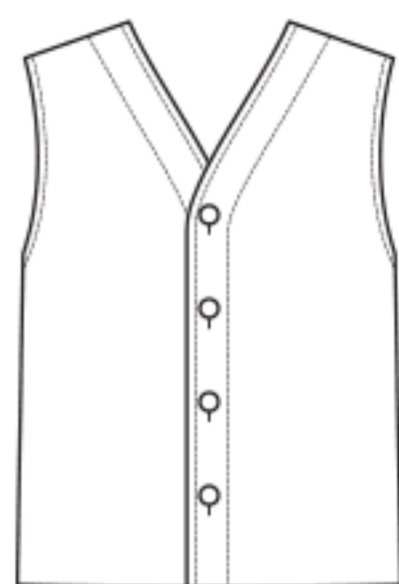
Extra fabric may be needed to match design or for shrinkage.

SIZES:	S	M	L	XL	XXL	
<b>FABRIC 45" (115 cm) WIDE</b>						
Vest A	1¾ (1.3)	1¾ (1.6)	1¾ (1.6)	1¾ (1.8)	1¾ (1.8)	yd (m)
Lining A	1½ (1.1)	1¾ (1.3)	1½ (1.4)	1¾ (1.6)	1¾ (1.6)	yd (m)
Vest B	1½ (1.5)	1¾ (1.8)	2 (1.9)	2 (1.9)	2½ (2.0)	yd (m)
Lining B	1¼ (1.2)	1¾ (1.3)	1½ (1.4)	1¾ (1.6)	1¾ (1.6)	yd (m)
<b>FABRIC 60" (152 cm) WIDE</b>						
Vest A	1 (1.0)	1 (1.0)	1 (1.0)	1½ (1.1)	1½ (1.4)	yd (m)
Vest B	1¼ (1.2)	1¼ (1.2)	1¼ (1.2)	1¼ (1.2)	1¾ (1.6)	yd (m)

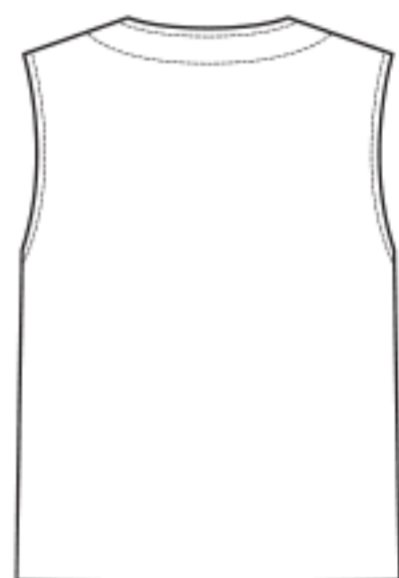
### SEW-IN INTERFACING 18", 20" (46, 51 cm) WIDE

Interfacing A - 1½ yd (1.1 m)  
Interfacing B - 1½ yd (1.5 m)

**NOTIONS:** **A:** Four 1" (2.5 cm) buttons. **B:** Five 1" (2.5 cm) buttons.



Front A



Back A



Front B



Back B