

K4255 Misses' Coats and Sash

XS-S-M-L-XL

Lined wrap coats have front, back and sleeve seaming details with contrast fabric. Shoulder pads and side seam pockets. **A:** Sash.

FABRICS: Designed for medium to heavy weight woven fabrics.

Suggested Fabrics: Wool blends, tweed, brocade, boiled wool, cotton types.

Lining: Lining fabrics.

STANDARD BODY MEASUREMENTS:

SIZES:	XS	S	M	L	XL	
Bust	31 ¹ / ₂ -32 ¹ / ₂	34-35 ¹ / ₂	37-38 ¹ / ₂	40-41 ¹ / ₂	43-45	"
	80-83	86-90	94-98	102-106	110-114	cm
Waist	22 ¹ / ₂ -23 ¹ / ₂	24 ³ / ₄ -26	27 ¹ / ₂ -29	31-33	35-37	"
	57-60	63-66	70-74	79-84	89-94	cm
Hip	32 ¹ / ₄ -34	35 ¹ / ₂ -37	38 ¹ / ₂ -40	41 ¹ / ₂ -43 ¹ / ₂	45-47	"
	82-86	90-94	98-102	106-110	115-120	cm
Back Waist Length	15 ¹ / ₂	16	16 ¹ / ₂	17	17	"
	39	41	42	43	43	cm

FINISHED GARMENT MEASUREMENTS:

SIZES:	XS	S	M	L	XL	
Finished Length at Center Back From Waist						
A, B	23 (59)	23 ¹ / ₂ (60.3)	24 (61)	24 ¹ / ₂ (62.3)	25 (64)	" (cm)

MATERIAL REQUIRED: Fabric requirement allows for nap, one-way design or shading.

Extra fabric may be needed to match design or for shrinkage.

SIZES	XS	S	M	L	XL	
-------	----	---	---	---	----	--

FABRIC 45" (115 cm) WIDE

Coat, Sash A	2 ⁵ / ₈ (2.4)	2 ⁵ / ₈ (2.4)	3 ³ / ₈ (3.1)	3 ³ / ₈ (3.1)	3 ³ / ₈ (3.1)	yd (m)
Contrast A	1 ³ / ₈ (1.3)	1 ³ / ₈ (1.3)	1 ¹ / ₂ (1.4)	1 ¹ / ₂ (1.4)	1 ⁵ / ₈ (1.5)	yd (m)
Coat B	1 ³ / ₄ (1.6)	2 (1.9)	2 ⁵ / ₈ (2.4)	2 ⁵ / ₈ (2.4)	2 ⁵ / ₈ (2.4)	yd (m)
Contrast B	1 ³ / ₄ (1.6)	1 ³ / ₄ (1.6)	1 ⁷ / ₈ (1.8)	2 (1.9)	2 (1.9)	yd (m)
Lining A, B	2 ¹ / ₂ (2.3)	2 ¹ / ₂ (2.3)	2 ¹ / ₂ (2.3)	3 (2.8)	3 (2.8)	yd (m)

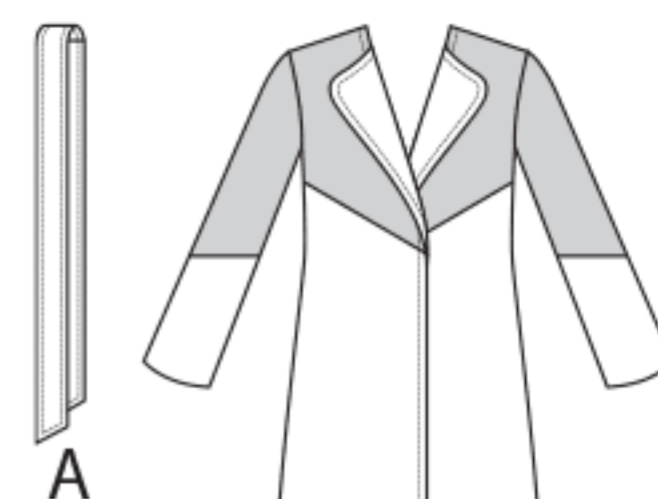
FABRIC 60" (152 cm) WIDE

Coat, Sash A	2 ¹ / ₈ (2.0)	2 ¹ / ₈ (2.0)	2 ¹ / ₈ (2.0)	2 ¹ / ₄ (2.1)	2 ¹ / ₄ (2.1)	yd (m)
Contrast A	1 ¹ / ₄ (1.2)	1 ¹ / ₄ (1.2)	1 ¹ / ₄ (1.2)	1 ¹ / ₄ (1.2)	1 ¹ / ₄ (1.2)	yd (m)
Coat B	1 ⁷ / ₈ (1.8)	1 ⁷ / ₈ (1.8)	1 ⁷ / ₈ (1.8)	1 ⁷ / ₈ (1.8)	1 ⁷ / ₈ (1.8)	yd (m)
Contrast B	1 ¹ / ₄ (1.2)	1 ³ / ₈ (1.3)	1 ¹ / ₂ (1.4)	1 ¹ / ₂ (1.4)	1 ³ / ₄ (1.6)	yd (m)

FUSIBLE INTERFACING 18", 20" (46, 51 cm) WIDE

Interfacing A, B	1 ³ / ₄ (1.6)	1 ³ / ₄ (1.6)	1 ³ / ₄ (1.6)	1 ³ / ₄ (1.6)	1 ³ / ₄ (1.6)	yd (m)
------------------	-------------------------------------	-------------------------------------	-------------------------------------	-------------------------------------	-------------------------------------	--------

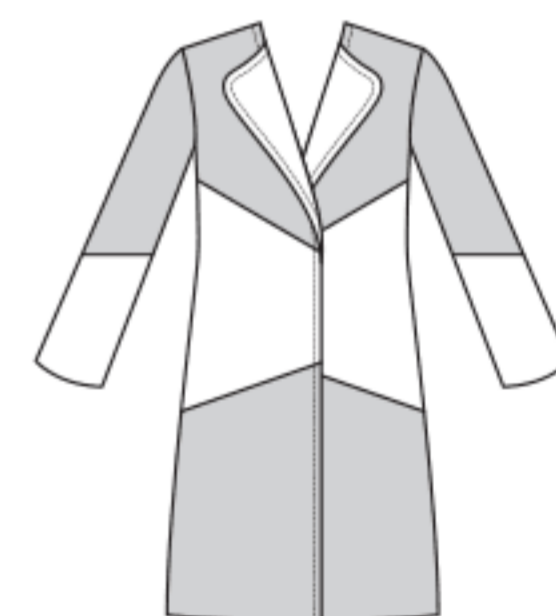
NOTIONS: A, B: One Pair of 1/2" (1.3 cm) Shoulder Pads.



Front A



Back A and B



Front B