

K4221 Misses' Jacket and Pants XS-S-M-L-XL

Unlined jackets have an angled buttoned front with flaps, neck, front and hem bands, back darts and full length sleeves. Pull-on pants in two lengths have elastic in casing at waist. **Jacket B:** Contrast flaps and bands. **Pants C:** Wide leg cropped length pants. **Pants D:** Tapered leg full length pants.

FABRICS: Designed for medium weight woven and stable knit fabrics.

Suggested Fabrics: Brocade, wool blends, crepe, velour, french terry, jersey, ponte knit.

STANDARD BODY MEASUREMENTS:

| SIZES: | XS | S | M | L | XL | |
|-------------------|---------|--------|--------|---------|---------|----|
| Bust | 31½-32½ | 34-35½ | 37-38½ | 40-41½ | 43-45 | " |
| | 80-83 | 86-90 | 94-98 | 102-106 | 110-114 | cm |
| Waist | 22½-23½ | 24¾-26 | 27½-29 | 31-33 | 35-37 | " |
| | 57-60 | 63-66 | 70-74 | 79-84 | 89-94 | cm |
| Hip | 32¼-34 | 35½-37 | 38½-40 | 41½-43½ | 45-47 | " |
| | 82-86 | 90-94 | 98-102 | 106-110 | 115-120 | cm |
| Back Waist Length | 15½ | 16 | 16½ | 17 | 17 | " |
| | 39 | 41 | 42 | 43 | 43 | cm |

FINISHED GARMENT MEASUREMENTS:

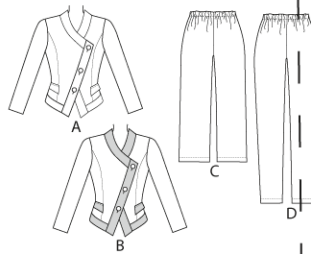
| SIZES: | XS | S | M | L | XL | |
|---|------------|-------------|-------------|------------|-------------|--------|
| Width, lower edge | | | | | | |
| Jacket A, B | 37½ (95.3) | 40½ (103.3) | 43½ (110.3) | 47 (120) | 50½ (128.3) | " (cm) |
| Finished Length at Center Back From Waist | | | | | | |
| Jacket A, B | 23½ (60.3) | 24 (61) | 24½ (62.3) | 25 (64) | 25½ (65.3) | " (cm) |
| Finished Width at Bottom Leg | | | | | | |
| Pants C | 24½ (62.3) | 25 (64) | 25½ (65.3) | 26 (66) | 26½ (67.3) | " (cm) |
| Pants D | 14¾ (37.0) | 14⅞ (38.2) | 15¾ (39.0) | 15⅞ (40.2) | 16¾ (42.0) | " (cm) |
| Finished Inside Leg Seam | | | | | | |
| Pants C | 19¼ (49.6) | 19¾ (51.0) | 20¼ (51.6) | 20¾ (53.0) | 21¼ (54.6) | " (cm) |
| Pants D | 28¾ (72.0) | 28⅞ (73.2) | 29¾ (75.0) | 29⅞ (76.2) | 30¾ (77.0) | " (cm) |

MATERIAL REQUIRED: Fabric requirement allows for nap, one-way design or shading.

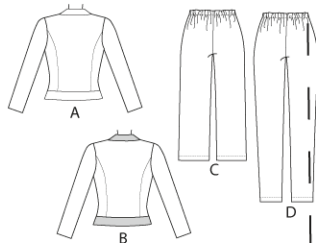
Extra fabric may be needed to match design or for shrinkage.

| SIZES: | XS | S | M | L | XL | |
|---------------------------------|----------|----------|----------|----------|----------|--------|
| FABRIC 45" (115 cm) WIDE | | | | | | |
| Jacket A | 2¾ (2.2) | 2¾ (2.2) | 2⅞ (2.7) | 3 (2.7) | 3 (2.7) | yd (m) |
| Jacket B | 1⅞ (1.8) | 2 (1.9) | 2⅞ (2.0) | 2⅞ (2.0) | 2¼ (2.1) | yd (m) |
| Pants C | 2⅞ (2.0) | 2⅞ (2.0) | 2⅞ (2.0) | 2⅞ (2.0) | 2⅞ (2.0) | yd (m) |
| Pants D | 2⅞ (2.0) | 2½ (2.3) | 2½ (2.3) | 2½ (2.3) | 2½ (2.3) | yd (m) |
| FABRIC 60" (152 cm) WIDE | | | | | | |
| Jacket A | 1⅞ (1.8) | 1⅞ (1.8) | 2⅞ (2.0) | 2⅞ (2.0) | 2¼ (2.1) | yd (m) |
| Jacket B | 1⅞ (1.5) | 1⅞ (1.5) | 1⅞ (1.5) | 1⅞ (1.5) | 1¾ (1.6) | yd (m) |
| Pants C | 1⅞ (1.1) | 1¾ (1.6) | 1¾ (1.6) | 1⅞ (1.8) | 2⅞ (2.0) | yd (m) |
| Pants D | 1¾ (1.3) | 1¾ (1.3) | 2⅞ (2.0) | 2⅞ (2.0) | 2⅞ (2.0) | yd (m) |

NOTE: See Sewing Instructions for contrast, interfacing and notions.



Front



Back