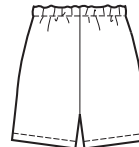




PANTS Back



SHORTS Back



price **3602** MISSES' SLEEP PANTS & SHORTS
XS-S-M-L-XL

Designed For Lightweight Woven Fabrics
Suggested Fabrics: Cotton, cotton types, broadcloth, chambray, flannel.

Misses' sleep pants and shorts have elastic in casing at waist. Pants and shorts are very easy to make and have special easy to follow sewing instructions.

Size	XS	S	M	L	XL	
Finished Inside Leg Seam	Pants 29" (73 cm) — All Sizes		Shorts 4" (10 cm) — All Sizes			
Material Required:	Fabric requirement allows for nap, one-way design or shading. Extra fabric may be needed to match design or for shrinkage.					
Fabric 60" (152 cm) Wide						
Pants	1 3/8 (1.30)	1 1/2 (1.40)	2 1/8 (1.95)	2 1/4 (2.10)	2 1/4 (2.10)	yd (m)
Shorts	5/8 (0.60)	3/4 (0.70)	3/4 (0.70)	7/8 (0.80)	1 1/8 (1.05)	yd (m)
Fabric 45" (115 cm) Wide						
Pants	2 1/8 (1.95)	2 1/2 (2.30)	2 1/2 (2.30)	2 5/8 (2.40)	2 5/8 (2.40)	yd (m)
Shorts	1 (0.95)	1 1/8 (1.05)	1 1/8 (1.05)	1 1/4 (1.15)	1 1/4 (1.15)	yd (m)
Notions:	Thread, 1 yd (0.95 m) of 1" (2.5 cm) wide elastic.					

ESPECIALLY DESIGNED FOR THE BEGINNER SEWER!