

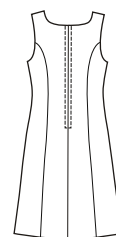
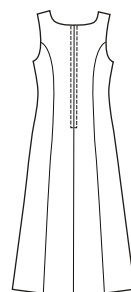


Jacket Back



VIEW A Back

VIEW B Back



Women's dresses and jacket. Fitted sleeveless princess line dresses have scoop neckline finished with facing, and center back zipper. View A is full length. View B is below knee length. Lined jacket is very short, has V-neckline, full length sleeves and optional center front hook and eye closure with decorative button.

KWIK•SEW®

3514 ^{price}

PLUS SIZES

WOMEN'S DRESSES & JACKET

Sizes: 1X-2X-3X-4X

DESIGNED FOR LIGHT TO MEDIUM WEIGHT WOVEN FABRICS

Suggested Fabrics: Crepe, silk-like fabrics, linen, faille, satin, taffeta, dupioni

Size	1X	2X	3X	4X	
Finished Length of Dress From Natural Waist					
View A	42" (106 cm)—All Sizes				
View B	26" (66 cm)—All Sizes				
Finished Length of Jacket at Center Back	16 (41)	16 1/2 (42)	17 (43)	17 1/2 (44)	" (cm)
Material Required: Fabric requirement allows for nap, one-way design or shading. Extra fabric may be needed to match design or for shrinkage.					
Fabric 60" (152 cm) Wide					
Dress View A	3 5/8 (3.35)	3 5/8 (3.35)	3 3/4 (3.45)	3 3/4 (3.45)	yd (m)
Dress View B	2 1/2 (2.30)	2 1/2 (2.30)	2 3/4 (2.55)	2 3/4 (2.55)	yd (m)
Jacket	1 3/8 (1.30)	1 1/2 (1.40)	1 1/2 (1.40)	1 3/4 (1.60)	yd (m)
Fabric 45" (115 cm) Wide					
Dress View A	4 7/8 (4.50)	5 1/8 (4.70)	5 1/8 (4.70)	5 1/4 (4.80)	yd (m)
Dress View B	3 5/8 (3.35)	3 5/8 (3.35)	3 3/4 (3.45)	3 7/8 (3.55)	yd (m)
Jacket	1 7/8 (1.75)	2 (1.85)	2 (1.85)	2 1/8 (1.95)	yd (m)
Lining 60" (152 cm) Wide					
Jacket	5/8 (0.60)	7/8 (0.80)	1 (0.95)	1 1/8 (1.05)	yd (m)
Lining 45" (115 cm) Wide					
Jacket	1 1/4 (1.15)	1 1/4 (1.15)	1 1/4 (1.15)	1 3/8 (1.30)	yd (m)
Fusible Interfacing 24" (60 cm) Wide					
Jacket	1 3/8 (1.30)	1 3/8 (1.30)	1 3/8 (1.30)	1 3/8 (1.30)	yd (m)

Notions: DRESS VIEW A & B: One 22" (55 cm) zipper, one hook & eye set. Optional: Fusible Interfacing. JACKET: Optional—one hook & eye set. One decorative button.

SPECIAL OCCASION