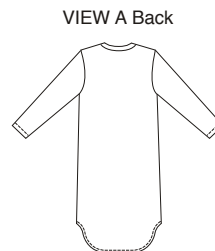
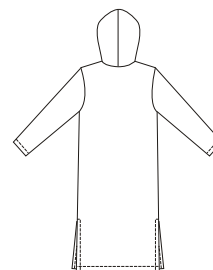




Girls' pullover gowns. View A has V-neckline with self fabric neckband and shaped hemline. View B has hood, pocket and side hemline slits.



VIEW A Back



VIEW B Back



A

B

**KWIK·SEW®**  
**3102** price

**GIRLS' GOWNS**

Sizes: XS (4-5), S (6),  
 M (7-8), L (10), XL (12-14)

**DESIGNED FOR STRETCH KNITS ONLY**

Suggested Fabrics: light to medium weight Polarfleece®, sweatshirt fleece,  
 French terry

Size	XS (4-5)	S (6)	M (7-8)	L (10)	XL (12-14)	
Height	42 (107)	46 (117)	50 (127)	55 (140)	60 (152)	" (cm)
Chest	23 1/2 (60)	25 (64)	26 1/2 (67)	28 1/2 (72)	31 (79)	" (cm)
Hip	24 (61)	25 1/2 (65)	27 1/2 (70)	30 (76)	32 (81)	" (cm)
<b>Finished Length at Center Back from Natural Neckline</b>						
View A & B	29 (73)	31 3/4 (80)	34 3/4 (88)	38 (96)	41 3/4 (106)	" (cm)
<b>Material Required:</b> Fabric requirement allows for nap, one-way design or shading. Extra fabric may be needed to match design or for shrinkage.						
<b>Fabric 60" (152 cm) Wide</b>						
View A	1 (0.95)	1 1/8 (1.05)	1 5/8 (1.50)	1 3/4 (1.60)	1 7/8 (1.75)	yd (m)
View B	1 1/4 (1.15)	1 1/4 (1.15)	1 3/4 (1.60)	1 7/8 (1.75)	2 (1.85)	yd (m)

**Notions:** Thread, scrap piece of fusible interfacing.